

Anti-IL-1RA Mouse mAb

Purified Recombinant Mouse Monoclonal Antibody

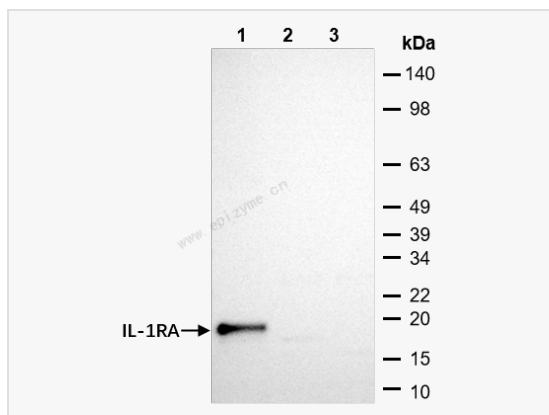
Catalog # M900047

Product Information

Application	WB, IHC-P/IF (Tissue-P)
Reactivity	Human
Dilution	WB 1:1,000~1:2,000; IHC-P 1:100~1:200
Host	Mouse
Clonality	Monoclonal
Clone No.	65K81R57
Isotype	IgG
Label	Unconjugated
Immunogen	Recombinant protein of human IL-1RA
Format	Affinity purified monoclonal antibody supplied in PBS with 0.02% sodium azide and 50% glycerol, pH 7.3.
Storage	Shipped on wet ice. Store at -20°C. Stable for 24 months from date of receipt. Aliquoting is unnecessary for -20°C storage.
Precautions	Anti-IL-1RA Mouse mAb [65K81R57] is for research use only and not for use in diagnostic or therapeutic procedures.

Protein Information

Synonyms	IL1F3; IL1RA; IL1RN; Interleukin-1 receptor antagonist protein; IL-1RN; IL-1ra; IRAP; ICIL-1RA; IL1 inhibitor.
Calculated MW	Calculated MW: 20 kDa; Observed MW: 20 kDa
Uniprot ID	P18510
Gene ID	3557
Background	The protein encoded by this gene is a member of the interleukin 1 cytokine family. This protein inhibits the activities of interleukin 1, alpha (IL1A) and interleukin 1, beta (IL1B), and modulates a variety of interleukin 1 related immune and inflammatory responses, particularly in the acute phase of infection and inflammation. This gene and five other closely related cytokine genes form a gene cluster spanning approximately 400 kb on chromosome 2. A polymorphism of this gene is reported to be associated with increased risk of osteoporotic fractures and gastric cancer. Several alternatively spliced transcript variants encoding distinct isoforms have been reported. [provided by RefSeq, Aug 2020]
Cellular Location	Isoform 1: Secreted. Isoform 2: Cytoplasm. Isoform 3: Cytoplasm. Isoform 4: Cytoplasm
Tissue Location	The intracellular form of IL1RN is predominantly expressed in epithelial cells.



Western Blot - Anti-IL-1RA Mouse mAb [65K81R57]

All lanes: M900047 at 1:1,000 dilution

Lane 1 : A431(Human epidermoid teratoma cell line) whole cell lysates

Lane 2 : HepG2 (Human hepatocarcinoma epithelial cell) whole cell lysates

Lane 3 : HCT116 (Human colorectal carcinoma epithelial cell) whole cell lysates

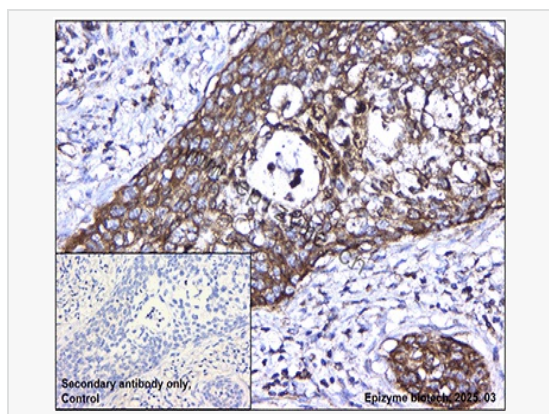
Lysates/proteins at 10 µg per lane.

Secondary antibody: Goat Anti-Mouse IgG (H+L), HRP conjugated (LF102) with dilution of 1:5,000

Predicted band size: 20 kDa

Observed band size: 20 kDa

Developed using the ECL technique (Cat. No. SQ201).



Immunohistochemistry - Anti-IL-1RA Mouse mAb [65K81R57]

Sample: Paraformaldehyde-fixed, paraffin embedded human cervical cancer tissue

Heat mediated antigen retrieval with Tris-EDTA buffer (pH 9.0) for 30 mins.

Primary antibody: M900047 at 1:200 dilution

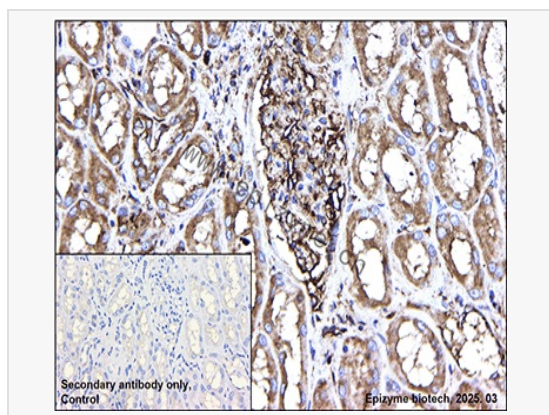
Secondary antibody: Goat Anti-Mouse IgG (H+L), HRP conjugated with dilution of 1:1,000

DAB was used as the chromogen.

Counter stained with hematoxylin.

Positive/negative staining were presented.

Only the secondary antibody was used as the negative control.



Immunohistochemistry - Anti-IL-1RA Mouse mAb [65K81R57]

Sample: Paraformaldehyde-fixed, paraffin embedded human placenta tissue

Heat mediated antigen retrieval with Tris-EDTA buffer (pH 9.0) for 30 mins.

Primary antibody: M900047 at 1:200 dilution

Secondary antibody: Goat Anti-Mouse IgG (H+L), HRP conjugated with dilution of 1:1,000

DAB was used as the chromogen.

Counter stained with hematoxylin.

Positive/negative staining were presented.

Only the secondary antibody was used as the negative control.