

[KD Validated] Anti-MAP1LC3A Rabbit mAb

Purified Recombinant Rabbit Monoclonal Antibody

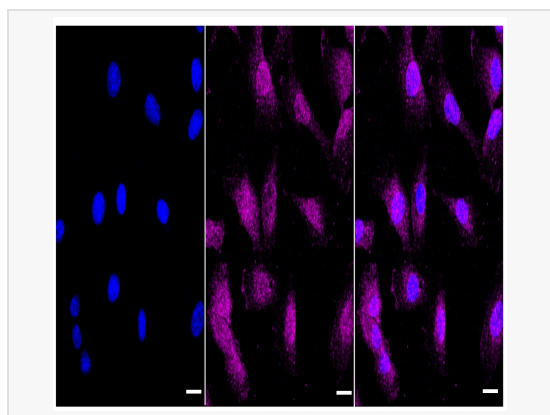
Catalog # R021887

Product Information

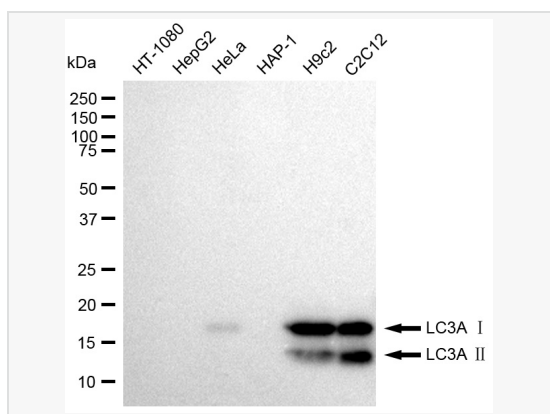
Application	WB, IF (Cell)/ICC
Reactivity	Human, Mouse, Rat
Dilution	WB 1:4,000~1:20,000; IF 1:100~1:1,000
Host	Rabbit
Clonality	Monoclonal
Clone No.	12G07Q86
Isotype	IgG
Label	Unconjugated
Immunogen	A synthesized peptide derived from human MAP1LC3A
Format	Affinity purified monoclonal antibody supplied in PBS with 0.02% sodium azide and 50% glycerol, pH 7.3.
Storage	Shipped on wet ice. Store at -20°C. Stable for 12 months from date of receipt. Aliquoting is unnecessary for -20°C storage.
Precautions	[KD Validated] Anti-MAP1LC3A Rabbit mAb [12G07Q86] is for research use only and not for use in diagnostic or therapeutic procedures.

Protein Information

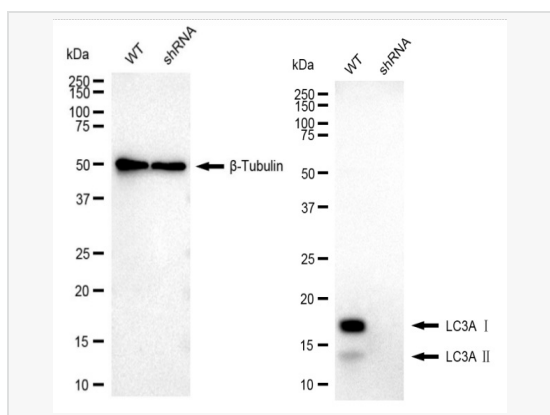
Synonyms	MAP1LC3A; Microtubule Associated Protein 1 Light Chain 3 Alpha; MAP1BLC3; MAP1ALC3; ATG8E; LC3A; LC3; Microtubule-Associated Proteins 1A/1B Light Chain 3A; Autophagy-Related Ubiquitin-Like Modifier LC3 A; MAP1 Light Chain 3-Like Protein 1; MAP1A/MAP1B Light Chain 3 A; MAP1A/MAP1B LC3 A; Microtubule-Associated Protein 1 Light Chain 3 Alpha; Microtubule-Associated Proteins 1A/1B Light Chain 3; Autophagy-Related Protein LC3 A; MAP1A/1B Light Chain 3 A.
Calculated MW	Calculated MW: 14 kDa, Observed MW: 14,16 kDa
Uniprot ID	Q9H492
Gene ID	84557
Background	Autophagy marker Light Chain 3 (LC3) was originally identified as a subunit of microtubule-associated proteins 1A and 1B (termed MAP1LC3), and subsequently found to contain similarity to the yeast protein Apg8/Aut7/Cvt5 critical for autophagy. Three human LC3 isoforms (LC3A, LC3B, and LC3C) undergo post-translational modifications during autophagy. Cleavage of LC3 at the carboxy terminus immediately following synthesis yields the cytosolic LC3-I form.



Immunocytochemical staining of C2C12 cells with MAP1LC3A antibody (R021887, 1:1,000). Nuclei were stained blue with DAPI; MAP1LC3A was stained magenta with Alexa Fluor® 647. Images were taken using Leica stellaris 5. Protein abundance based on laser Intensity and smart gain: Medium. Scale bar: 20 μ m.



Western blotting analysis using MAP1LC3A antibody (R021887). Total cell lysates (30 μ g) from various cell lines were loaded and separated by SDS-PAGE. The blot was incubated with MAP1LC3A antibody (R021887, 1:20,000) and HRP-conjugated goat anti-rabbit secondary antibody (1:20,000) respectively. Image was developed using ECL Substrate Kit.



Western blotting analysis using MAP1LC3A antibody (R021887). MAP1LC3A expression in wild type (WT) and MAP1LC3A shRNA knockdown (KD) HeLa cells with 30 μ g of total cell lysates. β -Tubulin serves as a loading control. The blot was incubated with MAP1LC3A antibody (R021887, 1:20,000) and HRP-conjugated goat anti-rabbit secondary antibody (1:20,000) respectively. Image was developed using ECL Substrate Kit.