

[KD Validated] Anti-IRF6 Rabbit mAb

Purified Recombinant Rabbit Monoclonal Antibody

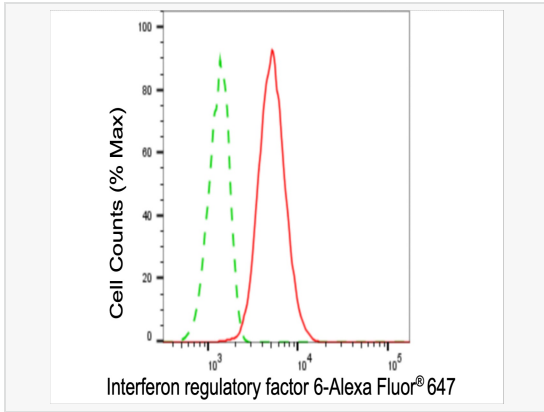
Catalog # R021858

Product Information

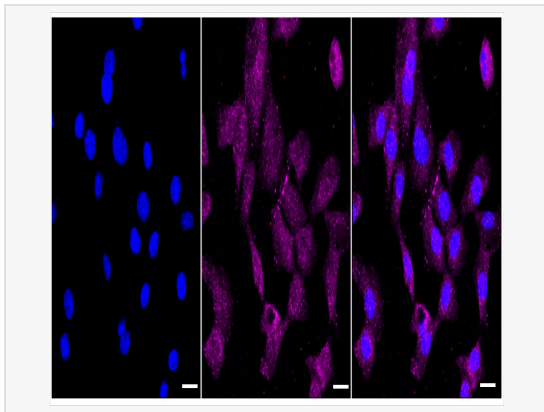
Application	WB, FC, IF (Cell)/ICC
Reactivity	Human, Mouse, Rat
Dilution	WB 1:1,000~1:5,000; FC 1:200~1:2,000; IF 1:100~1:1,000
Host	Rabbit
Clonality	Monoclonal
Clone No.	17T39G24
Isotype	IgG
Label	Unconjugated
Immunogen	A synthesized peptide derived from human IRF6
Format	Affinity purified monoclonal antibody supplied in PBS with 0.02% sodium azide and 50% glycerol, pH 7.3.
Storage	Shipped on wet ice. Store at -20°C. Stable for 12 months from date of receipt. Aliquoting is unnecessary for -20°C storage.
Precautions	[KD Validated] Anti-IRF6 Rabbit mAb [17T39G24] is for research use only and not for use in diagnostic or therapeutic procedures.

Protein Information

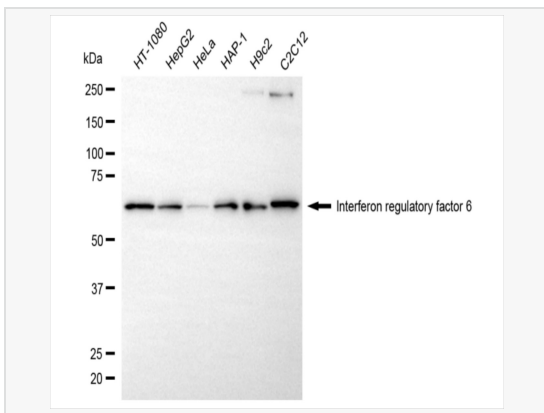
Synonyms	IRF6; Interferon Regulatory Factor 6; OFC6; VWS1; LPS; VWS; Van Der Woude Syndrome; IRF-6; PPS1; PIT; PPS.
Calculated MW	Calculated MW: 53 kDa, Observed MW: 60 kDa
Uniprot ID	O14896
Gene ID	3664
Background	This gene encodes a member of the interferon regulatory transcription factor (IRF) family. Family members share a highly-conserved N-terminal helix-turn-helix DNA-binding domain and a less conserved C-terminal protein-binding domain. The encoded protein may be a transcriptional activator. Mutations in this gene can cause van der Woude syndrome and popliteal pterygium syndrome. Mutations in this gene are also associated with non-syndromic orofacial cleft type 6. Alternate splicing results in multiple transcript variants.[provided by RefSeq, May 2011].
Cellular Location	Nucleus. Cytoplasm. Translocates to nucleus in response to an activating signal.
Tissue Location	Expressed in normal mammary epithelial cells. Expression is reduced or absent in breast carcinomas.



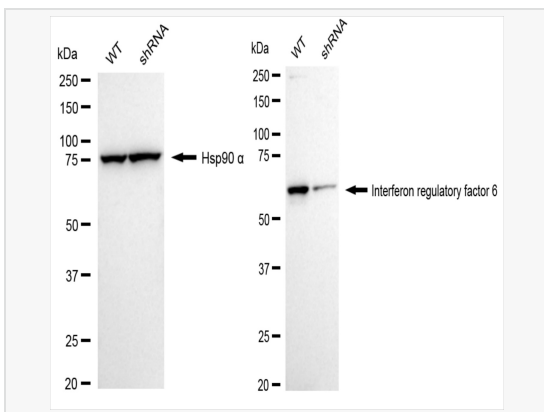
Flow cytometric analysis of interferon regulatory factor 6 expression in C2C12 cells using Interferon regulatory factor 6 antibody (R021858, 1:2,000). Green, isotype control; red, interferon regulatory factor 6.



Immunocytochemical staining of HepG2 cells with interferon regulatory factor 6 antibody (R021858, 1:1,000). Nuclei were stained blue with DAPI; Interferon regulatory factor 6 was stained magenta with Alexa Fluor® 647. Images were taken using Leica stellaris 5. Protein abundance based on laser Intensity and smart gain: Medium. Scale bar: 20 µm.



Western blotting analysis using interferon regulatory factor 6 antibody (R021858). Total cell lysates (30 µg) from various cell lines were loaded and separated by SDS-PAGE. The blot was incubated with interferon regulatory factor 6 antibody (R021858, 1:5,000) and HRP-conjugated goat anti-rabbit secondary antibody (1:20,000) respectively. Image was developed using ECL Substrate Kit.



Western blotting analysis using interferon regulatory factor 6 antibody (R021858). Interferon regulatory factor 6 expression in wild type (WT) and interferon regulatory factor 6 (IRF6) shRNA knockdown (KD) HeLa cells with 20 µg of total cell lysates. Hsp90 α serves as a loading control. The blot was incubated with interferon regulatory factor 6 antibody (R021858, 1:5,000) and HRP-conjugated goat anti-rabbit secondary antibody (1:20,000) respectively. Image was developed using ECL Substrate Kit.