

[KD Validated] Anti-PPIF Rabbit mAb

Purified Recombinant Rabbit Monoclonal Antibody

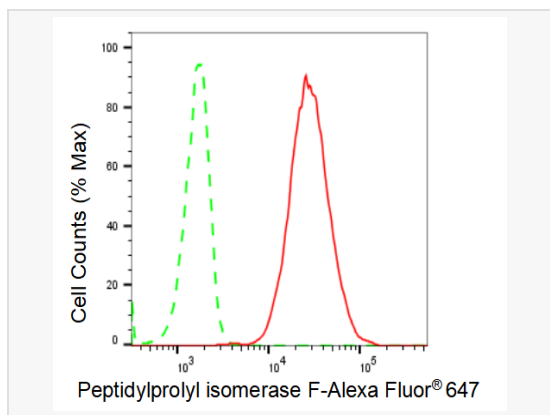
Catalog # R021828

Product Information

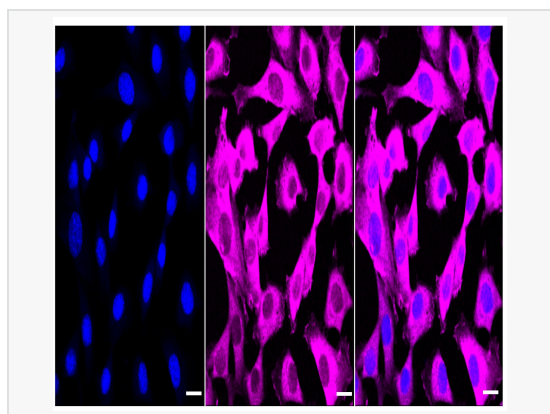
Application	WB, FC, IF (Cell)/ICC
Reactivity	Human, Mouse, Rat
Dilution	WB 1:1,000~1:5,000; FC 1:200~1:2,000; IF 1:100~1:1,000
Host	Rabbit
Clonality	Monoclonal
Clone No.	80Q00A03
Isotype	IgG
Label	Unconjugated
Immunogen	A synthesized peptide derived from human Cyclophilin F
Format	Affinity purified monoclonal antibody supplied in PBS with 0.02% sodium azide and 50% glycerol, pH 7.3.
Storage	Shipped on wet ice. Store at -20°C. Stable for 12 months from date of receipt. Aliquoting is unnecessary for -20°C storage.
Precautions	[KD Validated] Anti-PPIF Rabbit mAb [80Q00A03] is for research use only and not for use in diagnostic or therapeutic procedures.

Protein Information

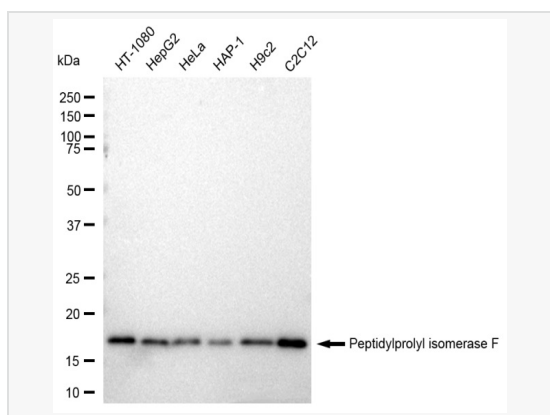
Synonyms	PPIF; Peptidylprolyl Isomerase F; Cyclophilin D; CypD; Peptidyl-Prolyl Cis-Trans Isomerase F, Mitochondrial; Mitochondrial Cyclophilin; Cyclophilin F; Rotamase F; EC 5.2.1.8; PPIase F; Cyp-D; CyP-M; CYP3; Peptidyl-Prolyl Cis-Trans Isomerase, Mitochondrial; Peptidylprolyl Isomerase F (Cyclophilin F; Cyclophilin 3; HCyP3; CYP-D; HCYP3; CyP-D; CYPD.
Calculated MW	Calculated MW: 22 kDa, Observed MW: 18 kDa
Uniprot ID	P30405
Gene ID	10105
Background	PPIases accelerate the folding of proteins. It catalyzes the cis-trans isomerization of proline imidic peptide bonds in oligopeptides.



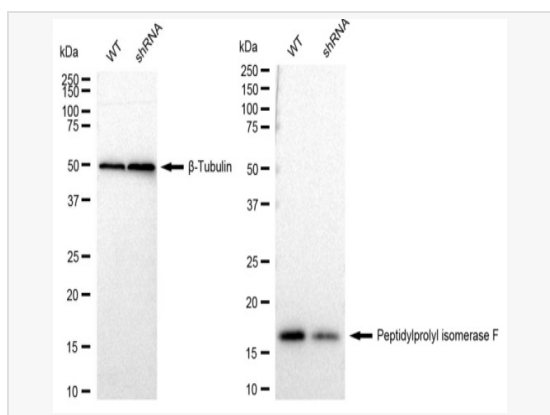
Flow cytometric analysis of Peptidylprolyl isomerase F expression in C2C12 cells using Peptidylprolyl isomerase F antibody (R021828, 1:2,000). Green, isotype control; red, Peptidylprolyl isomerase F.



Immunocytochemical staining of C2C12 cells with Peptidylprolyl isomerase F antibody (R021828, 1:1,000). Nuclei were stained blue with DAPI; Peptidylprolyl isomerase F was stained magenta with Alexa Fluor® 647. Images were taken using Leica stellaris 5. Protein abundance based on laser Intensity and smart gain: High. Scale bar: 20 μ m.



Western blotting analysis using Peptidylprolyl isomerase F antibody (R021828). Total cell lysates (30 μ g) from various cell lines were loaded and separated by SDS-PAGE. The blot was incubated with Peptidylprolyl isomerase F antibody (R021828, 1:5,000) and HRP-conjugated goat anti-rabbit secondary antibody (1:20,000) respectively. Image was developed using ECL Substrate Kit.



Western blotting analysis using Peptidylprolyl isomerase F antibody (R021828). Peptidylprolyl isomerase F expression in wild type (WT) and peptidylprolyl isomerase F shRNA knockdown (KD) HeLa cells with 30 μ g of total cell lysates. β -Tubulin serves as a loading control. The blot was incubated with Peptidylprolyl isomerase F antibody (R021828, 1:5,000) and HRP-conjugated goat anti-rabbit secondary antibody (1:20,000) respectively. Image was developed using ECL Substrate Kit.