

[KD Validated] Anti-JAK1 Rabbit mAb

Purified Recombinant Rabbit Monoclonal Antibody

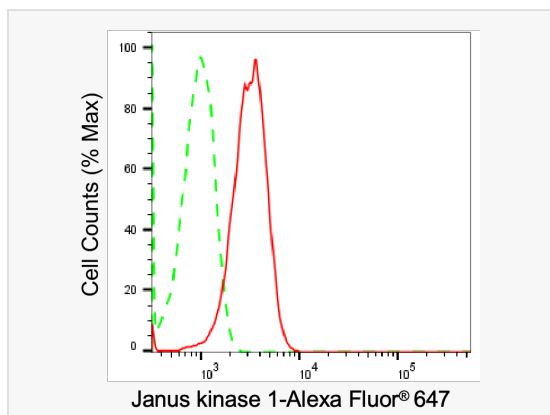
Catalog # R021809

Product Information

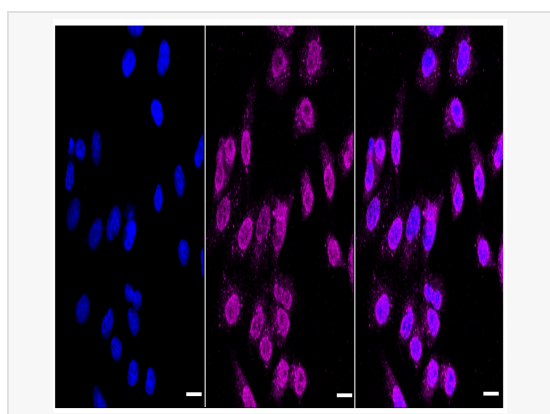
Application	WB, FC, IF (Cell)/ICC
Reactivity	Human, Mouse, Rat
Dilution	WB 1:1,000~1:5,000; FC 1:200~1:2,000; IF 1:100~1:1,000
Host	Rabbit
Clonality	Monoclonal
Clone No.	18P44L51
Isotype	IgG
Label	Unconjugated
Immunogen	A synthesized peptide derived from human JAK1
Format	Affinity purified monoclonal antibody supplied in PBS with 0.02% sodium azide and 50% glycerol, pH 7.3.
Storage	Shipped on wet ice. Store at -20°C. Stable for 12 months from date of receipt. Aliquoting is unnecessary for -20°C storage.
Precautions	[KD Validated] Anti-JAK1 Rabbit mAb [18P44L51] is for research use only and not for use in diagnostic or therapeutic procedures.

Protein Information

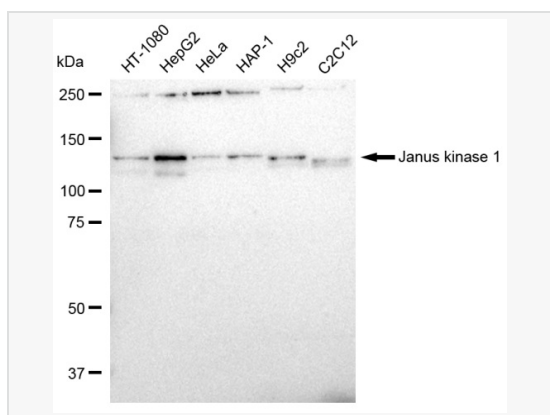
Synonyms	JAK1; Janus Kinase 1; JAK1A; JAK1B; JTK3; Tyrosine-Protein Kinase JAK1; EC 2.7.10.2; EC 2.7.10; AIIDE; JAK-1.
Calculated MW	Calculated MW: 133 kDa, Observed MW: 133 kDa
Uniprot ID	P23458
Gene ID	3716
Background	Tyrosine kinase of the non-receptor type, involved in the IFN-alpha/beta/gamma signal pathway. Kinase partner for the interleukin (IL)-2 receptor.



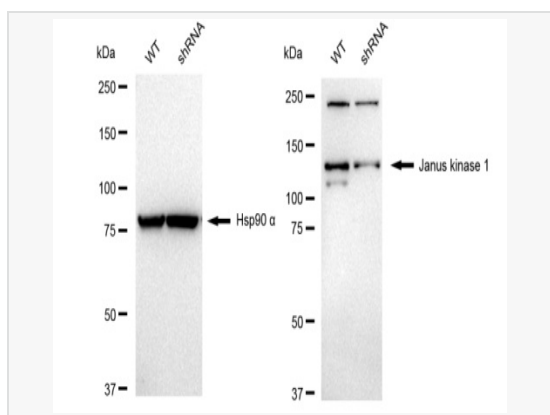
Flow cytometric analysis of Janus kinase 1 expression in HepG2 cells using Janus kinase 1 antibody (R021809, 1:2,000). Green, isotype control; red, Janus kinase 1.



Immunocytochemical staining of HepG2 cells with Janus kinase 1 antibody (R021809, 1:1,000). Nuclei were stained blue with DAPI; Janus kinase 1 was stained magenta with Alexa Fluor® 647. Images were taken using Leica stellaris 5. Protein abundance based on laser Intensity and smart gain: Medium. Scale bar: 20 µm.



Western blotting analysis using Janus kinase 1 antibody (R021809). Total cell lysates (30 µg) from various cell lines were loaded and separated by SDS-PAGE. The blot was incubated with Janus kinase 1 antibody (R021809, 1:5,000) and HRP-conjugated goat anti-rabbit secondary antibody (1:20,000) respectively. Image was developed using ECL Substrate Kit.



Western blotting analysis using Janus kinase 1 antibody (R021809). Janus kinase 1 expression in wild type (WT) and Janus kinase 1 shRNA knockdown (KD) 293T cells with 30 µg of total cell lysates. β-Tubulin serves as a loading control. The blot was incubated with Janus kinase 1 antibody (R021809, 1:5,000) and HRP-conjugated goat anti-rabbit secondary antibody (1:20,000) respectively. Image was developed using ECL Substrate Kit.