

[KD Validated] Anti-RAD51 Rabbit mAb

Purified Recombinant Rabbit Monoclonal Antibody

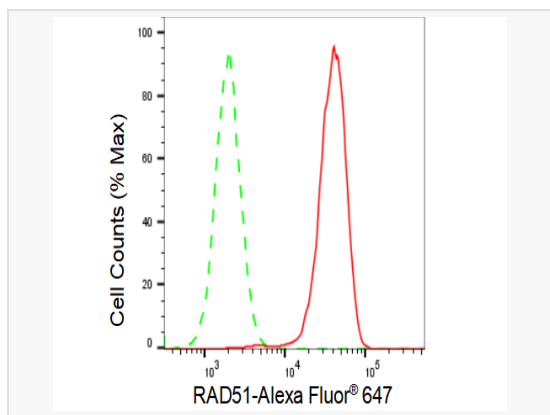
Catalog # R021803

Product Information

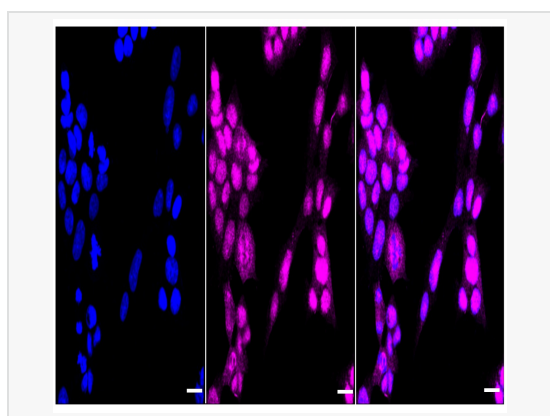
Application	WB, FC, IF (Cell)/ICC
Reactivity	Human, Mouse, Rat
Dilution	WB 1:1,000~1:5,000; FC 1:200~1:2,000; IF 1:100~1:1,000
Host	Rabbit
Clonality	Monoclonal
Clone No.	14E13S93
Isotype	IgG
Label	Unconjugated
Immunogen	A synthesized peptide derived from human Rad51
Format	Affinity purified monoclonal antibody supplied in PBS with 0.02% sodium azide and 50% glycerol, pH 7.3.
Storage	Shipped on wet ice. Store at -20°C. Stable for 12 months from date of receipt. Aliquoting is unnecessary for -20°C storage.
Precautions	[KD Validated] Anti-RAD51 Rabbit mAb [14E13S93] is for research use only and not for use in diagnostic or therapeutic procedures.

Protein Information

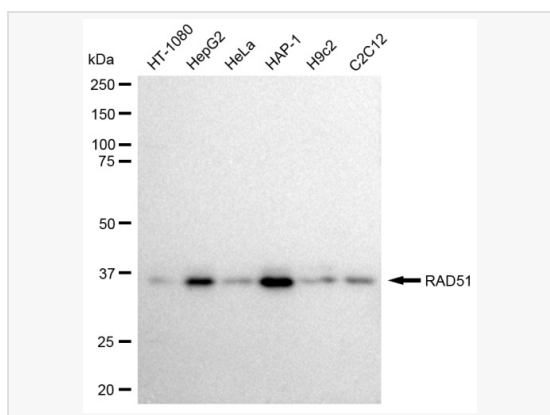
Synonyms	RAD51; RAD51 Recombinase; RAD51A; BRCC5; FANCR; RECA; BRCA1/BRCA2-Containing Complex, Subunit 5; DNA Repair Protein RAD51 Homolog 1; RAD51 Homolog A; HsT16930; HsRad51; HRAD51; RAD51 Homolog (RecA Homolog, E. Coli) (S. Cerevisiae); RAD51 (S. Cerevisiae) Homolog (E Coli RecA Homolog); RAD51 Homolog (S. Cerevisiae); RecA, E. Coli, Homolog Of; Recombination Protein A; RecA-Like Protein; HST16930; HSRAD51; HsRAD51; MRMV2.
Calculated MW	Calculated MW: 37 kDa, Observed MW: 36 kDa
Uniprot ID	Q06609
Gene ID	5888
Background	Rad51 participates in a common DNA damage response pathway associated with the activation of homologous recombination and double-strand break repair. Binds to single and double-stranded DNA and exhibits DNA-dependent ATPase activity. Underwinds duplex DNA and forms helical nucleoprotein filaments.



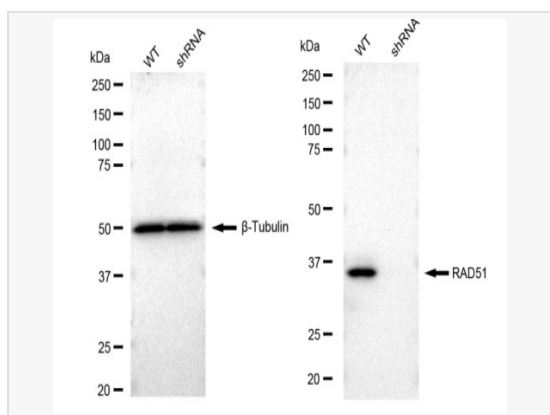
Flow cytometric analysis of RAD51 expression in HAP-1 cells using RAD51 antibody (R021803, 1:2,000). Green, isotype control; red, RAD51.



Immunocytochemical staining of HAP-1 cells with RAD51 antibody (R021803, 1:1,000). Nuclei were stained blue with DAPI; RAD51 was stained magenta with Alexa Fluor® 647. Images were taken using Leica stellaris 5. Protein abundance based on laser Intensity and smart gain: Medium. Scale bar: 20 µm.



Western blotting analysis using RAD51 antibody (R021803). Total cell lysates (30 µg) from various cell lines were loaded and separated by SDS-PAGE. The blot was incubated with RAD51 antibody (R021803, 1:5,000) and HRP-conjugated goat anti-rabbit secondary antibody (1:20,000) respectively. Image was developed using ECL Substrate Kit.



Western blotting analysis using RAD51 antibody (R021803). RAD51 expression in wild type (WT) and RAD51 shRNA knockdown (KD) HeLa cells with 30 µg of total cell lysates. β-Tubulin serves as a loading control. The blot was incubated with RAD51 antibody (R021803, 1:5,000) and HRP-conjugated goat anti-rabbit secondary antibody (1:20,000) respectively. Image was developed using ECL Substrate Kit.