

[KD Validated] Anti-RACK1 Rabbit mAb

Purified Recombinant Rabbit Monoclonal Antibody

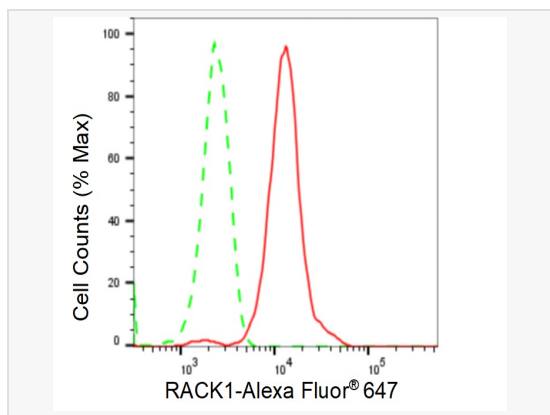
Catalog # R021791

Product Information

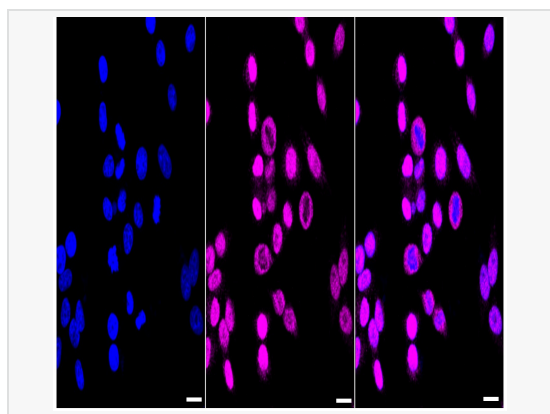
Application	WB, FC, IF (Cell)/ICC
Reactivity	Human, Mouse, Rat
Dilution	WB 1:1,000~1:5,000; FC 1:200~1:2,000; IF 1:100~1:1,000
Host	Rabbit
Clonality	Monoclonal
Clone No.	48P17S82
Isotype	IgG
Label	Unconjugated
Immunogen	A synthesized peptide derived from human RACK1
Format	Affinity purified monoclonal antibody supplied in PBS with 0.02% sodium azide and 50% glycerol, pH 7.3.
Storage	Shipped on wet ice. Store at -20°C. Stable for 12 months from date of receipt. Aliquoting is unnecessary for -20°C storage.
Precautions	[KD Validated] Anti-RACK1 Rabbit mAb [48P17S82] is for research use only and not for use in diagnostic or therapeutic procedures.

Protein Information

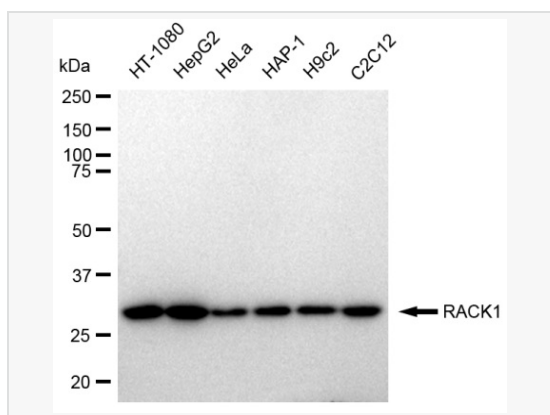
Synonyms	RACK1; Receptor For Activated C Kinase 1; GNB2L1; H12.3; Guanine Nucleotide Binding Protein (G Protein), Beta Polypeptide 2-Like 1; Guanine Nucleotide-Binding Protein Subunit Beta-Like Protein 12.3; Guanine Nucleotide-Binding Protein Subunit Beta-2-Like 1; Cell Proliferation-Inducing Gene 21 Protein ; Receptor Of Activated Protein C Kinase 1; Small Ribosomal Subunit Protein RACK1; Human Lung Cancer Oncogene 7 Protein ; Gnb2-Rs1; HLC-7; Protein Homologous To Chicken B Complex Protein, Guanine Nucleotide Binding; Guanine Nucleotide Binding Protein Beta Polypeptide 2-Like 1; Receptor Of Activated Protein Kinase C 1; Receptor For Activated C Kinase; Proliferation-Inducing Gene 21; Lung Cancer Oncogene 7; GNB2-RS1; PIG21.
Calculated MW	Calculated MW: 35 kDa, Observed MW: 35 kDa
Uniprot ID	P63244
Gene ID	10399
Background	Scaffolding protein involved in the recruitment, assembly and/or regulation of a variety of signaling molecules. Interacts with a wide variety of proteins and plays a role in many cellular processes. Component of the 40S ribosomal subunit involved in translational repression (PubMed:23636399). Involved in the initiation of the ribosome quality control (RQC), a pathway that takes place when a ribosome has stalled during translation, by promoting ubiquitination of a subset of 40S ribosomal subunits (PubMed:28132843).
Cellular Location	Cell membrane. Located on plasma membrane of neuroblastoma NMB7 cells.



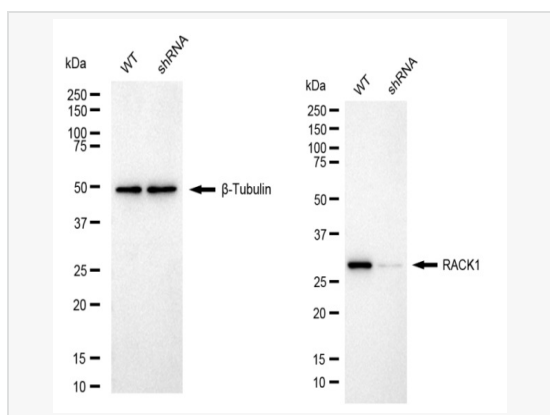
Flow cytometric analysis of RACK1 expression in HepG2 cells using RACK1 antibody (R021791, 1:2,000). Green, isotype control; red, RACK1.



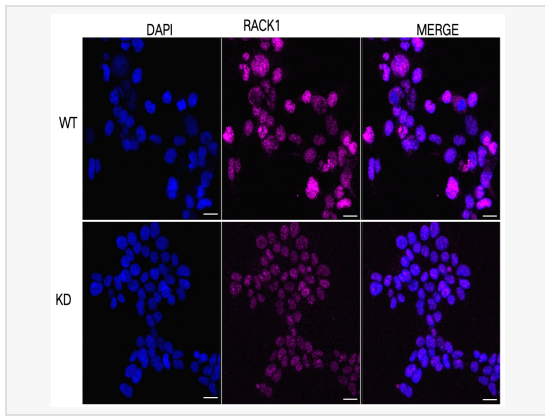
Immunocytochemical staining of HepG2 cells with RACK1 antibody (R021791, 1:1,000). Nuclei were stained blue with DAPI; RACK1 was stained magenta with Alexa Fluor® 647. Images were taken using Leica stellaris 5. Protein abundance based on laser Intensity and smart gain: Medium. Scale bar: 20 µm.



Western blotting analysis using RACK1 antibody (R021791). Total cell lysates (30 µg) from various cell lines were loaded and separated by SDS-PAGE. The blot was incubated with RACK1 antibody (R021791, 1:5,000) and HRP-conjugated goat anti-rabbit secondary antibody (1:20,000) respectively. Image was developed using ECL Substrate Kit.



Western blotting analysis using RACK1 antibody (R021791). RACK1 expression in wild-type (WT) and RACK1 shRNA knockdown (KD) HeLa cells with 20 µg of total cell lysates. β-Tubulin serves as a loading control. The blot was incubated with RACK1 antibody (R021791, 1:5,000) and HRP-conjugated goat anti-rabbit secondary antibody (1:20,000) respectively. Image was developed using ECL Substrate Kit.



Immunocytochemical staining of HeLa cells using RACK1 antibody (R021791, 1:1,000), Top panel: wild-type (WT); Bottom panel: RACK1 shRNA knockdown (KD). Nuclei were stained blue with DAPI; RACK1 was stained magenta with Alexa Fluor® 647. Scale bar, 20 μ m.