

## [KD Validated] Anti-KEAP1 Mouse mAb

Purified Recombinant Rabbit Monoclonal Antibody

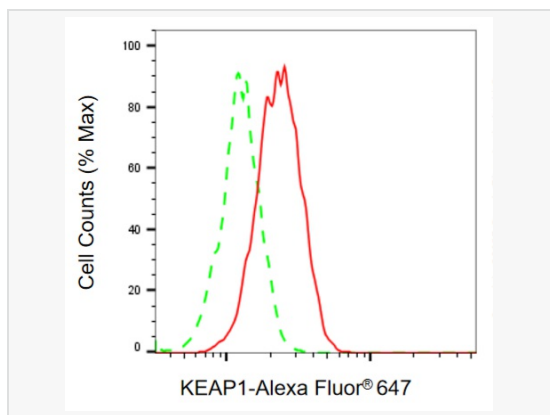
Catalog # M021784

### Product Information

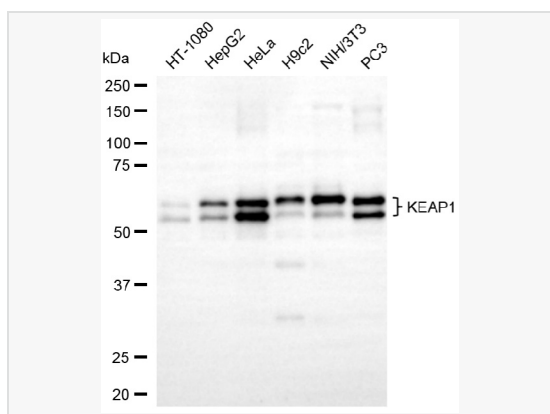
Application	WB, FC
Reactivity	Human, Mouse, Rat
Dilution	WB 1:2,500~1:5,000; FC 1:200~1:2,000
Host	Mouse
Clonality	Monoclonal
Clone No.	57O48J83
Isotype	IgG
Label	Unconjugated
Immunogen	Recombinant protein of human KEAP1
Format	Affinity purified monoclonal antibody supplied in PBS with 0.02% sodium azide and 50% glycerol, pH 7.3.
Storage	Shipped on wet ice. Store at -20°C. Stable for 12 months from date of receipt. Aliquoting is unnecessary for -20°C storage.
Precautions	[KD Validated] Anti-KEAP1 Mouse mAb [57O48J83] is for research use only and not for use in diagnostic or therapeutic procedures.

### Protein Information

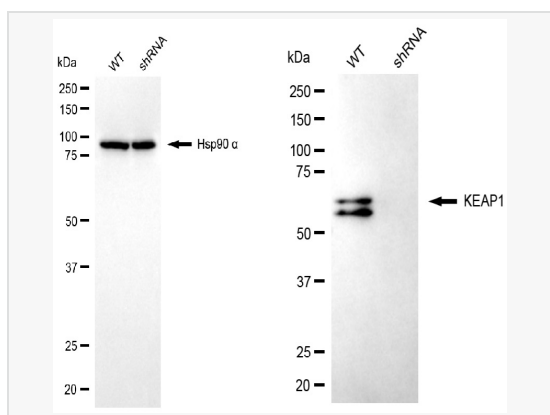
Synonyms	KEAP1; Kelch Like ECH Associated Protein 1; KLHL19; INrf2; KIAA0132; Kelch-Like ECH-Associated Protein 1; Kelch-Like Family Member 19; Cytosolic Inhibitor Of Nrf2; Kelch-Like Protein 19; MGC10630; MGC20887; MGC11114; MGC4407; MGC9454; KEAP1 Delta C; INRF2.
Calculated MW	Calculated MW: 70 kDa, Observed MW: 55-60 kDa
Uniprot ID	Q14145
Gene ID	9817
Background	This gene encodes a protein containing KELCH-1 like domains, as well as a BTB/POZ domain. Kelch-like ECH-associated protein 1 interacts with NF-E2-related factor 2 in a redox-sensitive manner and the dissociation of the proteins in the cytoplasm is followed by transportation of NF-E2-related factor 2 to the nucleus. This interaction results in the expression of the catalytic subunit of gamma-glutamylcysteine synthetase. Two alternatively spliced transcript variants encoding the same isoform have been found for this gene. [provided by RefSeq, Jul 2008]



Flow cytometric analysis of KEAP1 expression in HAP-1 cells using KEAP1 antibody (M021784, 1:2,000). Green, isotype control; red, KEAP1.



Western blotting analysis using KEAP1 antibody (M021784). Total cell lysates (30  $\mu$ g) from various cell lines were loaded and separated by SDS-PAGE. The blot was incubated with KEAP1 antibody (M021784, 1:5,000) and HRP-conjugated goat anti-mouse secondary antibody (1:20,000) respectively. Image was developed using ECL Substrate Kit.



Western blotting analysis using KEAP1 antibody (M021784). KEAP1 expression in wild-type (WT) and KEAP1 shRNA knockdown (KD) HeLa cells with 30  $\mu$ g of total cell lysates. Hsp90  $\alpha$  serves as a loading control. The blot was incubated with KEAP1 antibody (M021784, 1:1,000) and HRP-conjugated goat anti-mouse secondary antibody (1:20,000) respectively. Image was developed using ECL Substrate Kit.