

## [KD Validated] Anti-PPP3CA Rabbit mAb

Purified Recombinant Rabbit Monoclonal Antibody

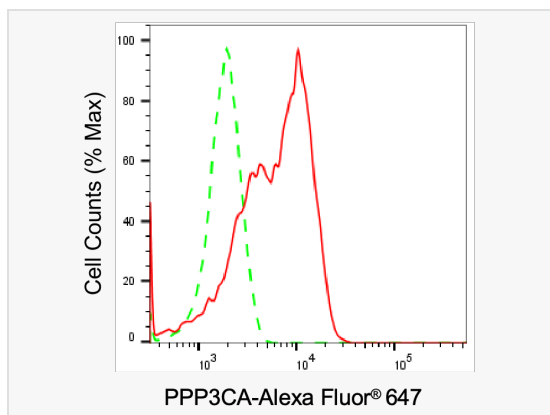
Catalog # R021769

### Product Information

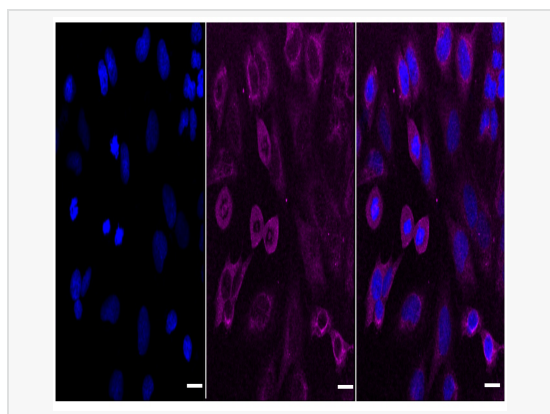
Application	WB, FC, IF (Cell)/ICC
Reactivity	Human, Mouse
Dilution	WB 1:1,000~1:5,000; FC 1:200~1:2,000; IF 1:100~1:1,000
Host	Rabbit
Clonality	Monoclonal
Clone No.	11T45J64
Isotype	IgG
Label	Unconjugated
Immunogen	A synthesized peptide derived from human Calcineurin A
Format	Affinity purified monoclonal antibody supplied in PBS with 0.02% sodium azide and 50% glycerol, pH 7.3.
Storage	Shipped on wet ice. Store at -20°C. Stable for 12 months from date of receipt. Aliquoting is unnecessary for -20°C storage.
Precautions	[KD Validated] Anti-PPP3CA Rabbit mAb [11T45J64] is for research use only and not for use in diagnostic or therapeutic procedures.

### Protein Information

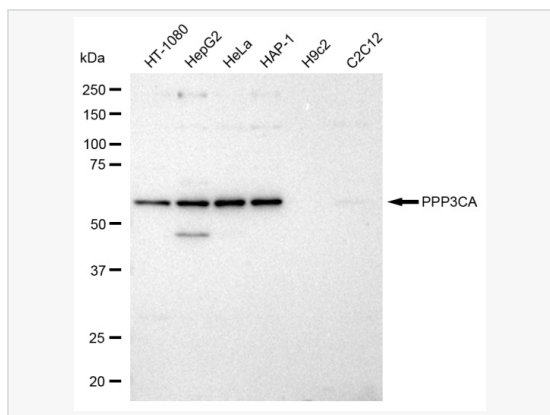
Synonyms	PPP3CA; Protein Phosphatase 3 Catalytic Subunit Alpha; Calcineurin A Alpha; PPP2B; CALNA; CNA1; CAM-PRP Catalytic Subunit; EC 3.1.3.16; CNA Alpha; CALN; Protein Phosphatase 3 (Formerly 2B), Catalytic Subunit, Alpha Isoform (Calcineurin A Alpha); Serine/Threonine-Protein Phosphatase 2B Catalytic Subunit Alpha Isoform; Protein Phosphatase 3 (Formerly 2B), Catalytic Subunit, Alpha Isoform; Protein Phosphatase 2B, Catalytic Subunit, Alpha Isoform; Calmodulin-Dependent Calcineurin A Subunit Alpha Isoform; Protein Phosphatase 3, Catalytic Subunit, Alpha Isozyme; Protein Phosphatase 3 Catalytic Subunit Alpha Isozyme; ACCIID; CALNA1; IECEE1; DEE91; IECEE; CCN1; CNA.
Calculated MW	Calculated MW: 59 kDa, Observed MW: 59 kDa
Uniprot ID	Q08209
Gene ID	5530
Background	Calcium-dependent, calmodulin-stimulated protein phosphatase which plays an essential role in the transduction of intracellular Ca <sup>2+</sup> -mediated signals (PubMed:15671020, PubMed:18838687, PubMed:19154138, PubMed:23468591)
Cellular Location	Nucleus. Colocalizes with ACTN1 and MYO22 at the Z line in heart and skeletal muscle.



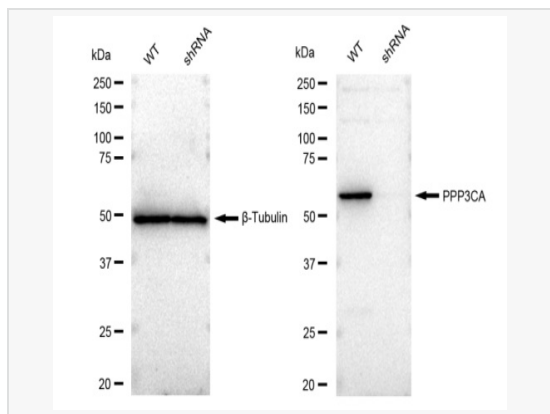
Flow cytometric analysis of PPP3CA expression in HeLa cells using PPP3CA antibody (R021769, 1:2,000). Green, isotype control; red, PPP3CA.



Immunocytochemical staining of HeLa cells with PPP3CA antibody (R021769, 1:1,000). Nuclei were stained blue with DAPI; PPP3CA was stained magenta with Alexa Fluor® 647. Images were taken using Leica stellaris 5. Protein abundance based on laser Intensity and smart gain: Medium. Scale bar: 20 µm.



Western blotting analysis using PPP3CA antibody (R021769). Total cell lysates (30 µg) from various cell lines were loaded and separated by SDS-PAGE. The blot was incubated with PPP3CA antibody (R021769, 1:5,000) and HRP-conjugated goat anti-rabbit secondary antibody (1:20,000) respectively. Image was developed using ECL Substrate Kit. PPP3CA, protein phosphatase 3 catalytic subunit alpha.



Western blotting analysis using PPP3CA antibody (R021769). PPP3CA expression in wild type (WT) and PPP3CA shRNA knockdown (KD) HeLa cells with 30 µg of total cell lysates. β-Tubulin serves as a loading control. The blot was incubated with PPP3CA antibody (R021769, 1:5,000) and HRP-conjugated goat anti-rabbit secondary antibody (1:20,000) respectively. Image was developed using ECL Substrate Kit.