

[KD Validated] Anti-JUN Rabbit mAb

Purified Recombinant Rabbit Monoclonal Antibody

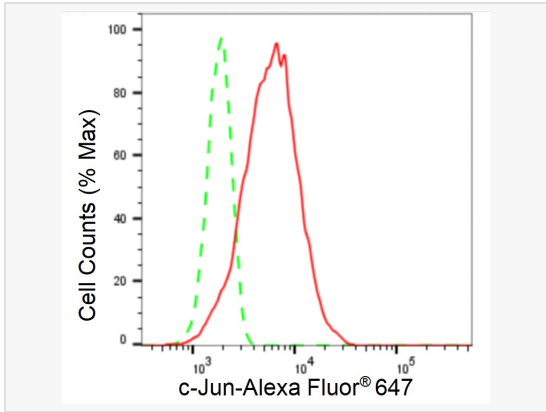
Catalog # R021760

Product Information

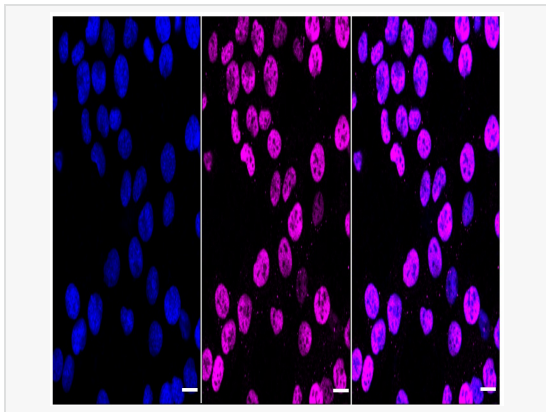
Application	WB, FC, IF (Cell)/ICC
Reactivity	Human, Mouse
Dilution	WB 1:1,000~1:5,000; FC 1:200~1:2,000; IF 1:100~1:1,000
Host	Rabbit
Clonality	Monoclonal
Clone No.	51T31N58
Isotype	IgG
Label	Unconjugated
Immunogen	A synthesized peptide derived from human c-Jun
Format	Affinity purified monoclonal antibody supplied in PBS with 0.02% sodium azide and 50% glycerol, pH 7.3.
Storage	Shipped on wet ice. Store at -20°C. Stable for 12 months from date of receipt. Aliquoting is unnecessary for -20°C storage.
Precautions	[KD Validated] Anti-JUN Rabbit mAb [51T31N58] is for research use only and not for use in diagnostic or therapeutic procedures.

Protein Information

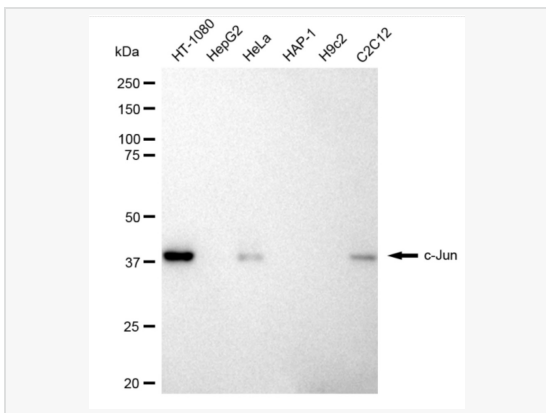
Synonyms	JUN; Jun Proto-Oncogene, AP-1 Transcription Factor Subunit; V-Jun Avian Sarcoma Virus 17 Oncogene Homolog; AP-1; Transcription Factor AP-1 Subunit Jun; Transcription Factor Jun; Proto-Oncogene C-Jun; Activator Protein 1; Jun Oncogene; C-Jun; AP1; P39; V-Jun Sarcoma Virus 17; Oncogene Homolog; Jun Activation Domain Binding Protein; Enhancer-Binding Protein AP1; Transcription Factor AP-1; Proto-Oncogene CJun; C-JUN; CJUN.
Calculated MW	Calculated MW: 36 kDa, Observed MW: 39 kDa
Uniprot ID	P05412
Gene ID	3725
Background	c-jun is a transcription factor that recognizes and binds to the enhancer heptamer motif 5'-TGA[CG]TCA-3'. Promotes activity of NR5A1 when phosphorylated by HIPK3 leading to increased steroidogenic gene expression upon cAMP signaling pathway stimulation.



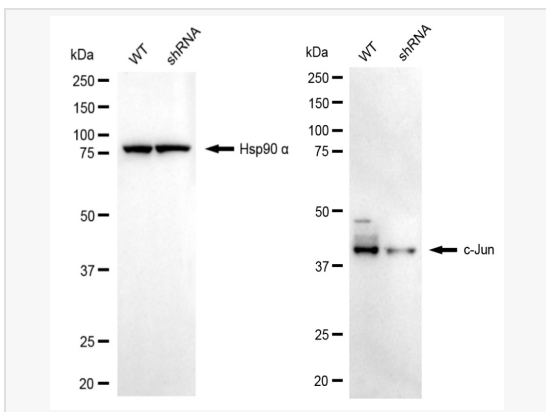
Flow cytometric analysis of c-Jun expression in HT-1080 cells using c-Jun antibody (R021760, 1:2,000). Green, isotype control; red, c-Jun.



Immunocytochemical staining of HT-1080 cells with C-Jun antibody (R021760, 1:1,000). Nuclei were stained blue with DAPI; C-Jun was stained magenta with Alexa Fluor® 647. Images were taken using Leica stellaris 5. Protein abundance based on laser Intensity and smart gain: Medium. Scale bar: 20 µm.



Western blotting analysis using c-Jun antibody (R021760). Total cell lysates (30 µg) from various cell lines were loaded and separated by SDS-PAGE. The blot was incubated with c-Jun antibody (R021760, 1:5,000) and HRP-conjugated goat anti-rabbit secondary antibody (1:20,000) respectively. Image was developed using ECL Substrate Kit.



Western blotting analysis using c-Jun antibody (R021760). C-Jun expression in wild-type (WT) and JUN shRNA knockdown (KD) C2C12 cells with 20 µg of total cell lysates. Hsp90 α serves as a loading control. The blot was incubated with c-Jun antibody (R021760, 1:5,000) and HRP-conjugated goat anti-rabbit secondary antibody (1:20,000) respectively. Image was developed using ECL Substrate Kit. JUN, Jun proto-oncogene, AP-1 transcription factor subunit.