

[KD Validated] Anti-RIPK1 Rabbit mAb

Purified Recombinant Rabbit Monoclonal Antibody

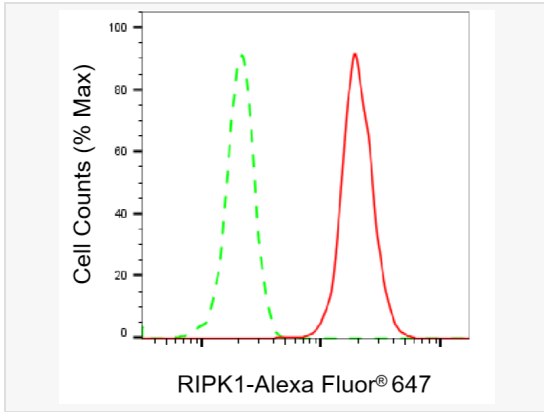
Catalog # R021755

Product Information

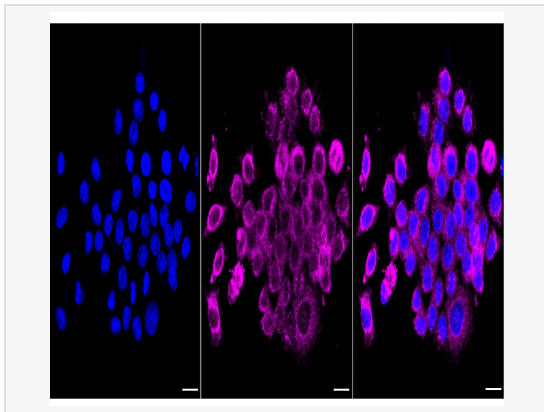
Application	WB, FC, IF (Cell)/ICC
Reactivity	Human
Dilution	WB 1:1,000~1:5,000; FC 1:200~1:2,000; IF 1:100~1:1,000
Host	Rabbit
Clonality	Monoclonal
Clone No.	40M66F58
Isotype	IgG
Label	Unconjugated
Immunogen	A synthesized peptide derived from human RIP
Format	Affinity purified monoclonal antibody supplied in PBS with 0.02% sodium azide and 50% glycerol, pH 7.3.
Storage	Shipped on wet ice. Store at -20°C. Stable for 12 months from date of receipt. Aliquoting is unnecessary for -20°C storage.
Precautions	[KD Validated] Anti-RIPK1 Rabbit mAb [40M66F58] is for research use only and not for use in diagnostic or therapeutic procedures.

Protein Information

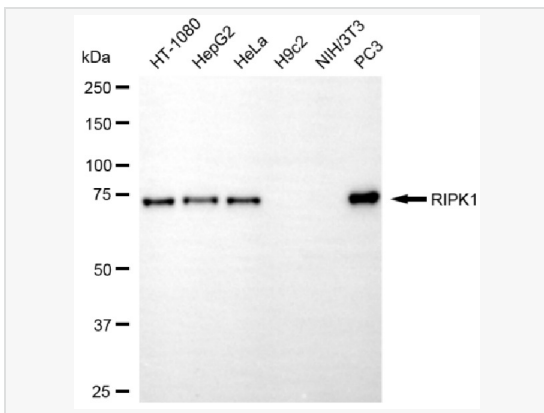
Synonyms	RIPK1; Receptor Interacting Serine/Threonine Kinase 1; RIP-1; RIP1; RIP; Receptor (TNFRSF)-Interacting Serine-Threonine Kinase 1; Receptor-Interacting Serine/Threonine-Protein Kinase 1; Receptor-Interacting Protein Kinase 1; Receptor-Interacting Protein 1; Cell Death Protein RIP; Serine/Threonine-Protein Kinase RIP; EC 2.7.11.1; AIEFL; IMD57.
Calculated MW	Calculated MW: 76 kDa; Observed MW: 74 kDa
Uniprot ID	Q13546
Gene ID	8737
Background	This gene encodes a member of the receptor-interacting protein (RIP) family of serine/threonine protein kinases. The encoded protein plays a role in inflammation and cell death in response to tissue damage, pathogen recognition, and as part of developmental regulation. RIPK1/RIPK3 kinase-mediated necrosis is referred to as necroptosis. Genetic disruption of this gene in mice results in death shortly after birth. [provided by RefSeq, Aug 2017]



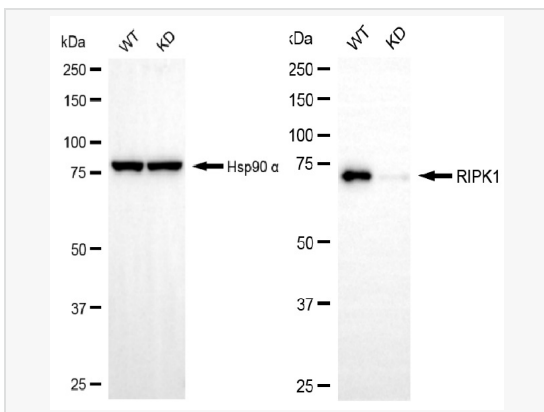
Flow cytometric analysis of RIPK1 expression in HepG2 cells using RIPK1 antibody (R021755, 1:2,000). Green, isotype control; red, RIPK1.



Immunocytochemical staining of HepG2 cells with RIPK1 antibody (R021755, 1:1,000). Nuclei were stained blue with DAPI; RIPK1 was stained magenta with Alexa Fluor® 647. Images were taken using Leica stellaris 5. Protein abundance based on laser Intensity and smart gain: Medium. Scale bar, 20 μm.



Western blotting analysis using RIPK1 antibody (R021755). Total cell lysates (30 μg) from various cell lines were loaded and separated by SDS-PAGE. The blot was incubated with RIPK1 antibody (R021755, 1:5,000) and HRP-conjugated goat anti-rabbit secondary antibody (1:20,000) respectively. Image was developed using ECL Substrate Kit.



Western blotting analysis using RIPK1 antibody (R021755). RIPK1 expression in wild-type (WT) and RIPK1 knockdown (KD) 293T cells with 20 μg of total cell lysates. Hsp90 α serves as a loading control. The blot was incubated with RIPK1 antibody (R021755, 1:5,000) and HRP-conjugated goat anti-rabbit secondary antibody (1:20,000) respectively. Image was developed using ECL Substrate Kit.