

[KD Validated] Anti-MAP2K3 Rabbit mAb

Purified Recombinant Rabbit Monoclonal Antibody

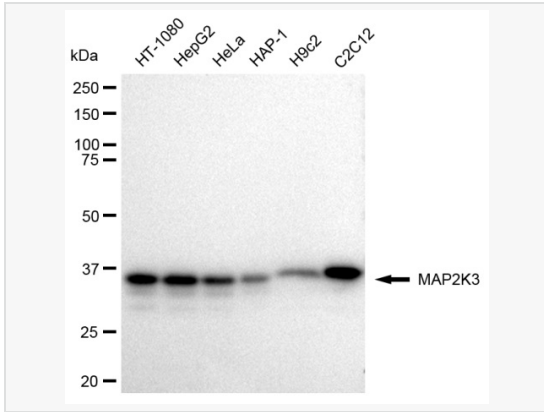
Catalog # R021751

Product Information

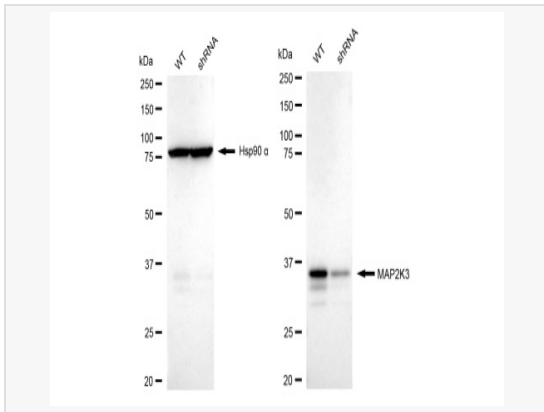
Application	WB, FC, IF (Cell)/ICC
Reactivity	Human, Mouse, Rat
Dilution	WB 1:1,000~1:5,000; FC 1:200~1:2,000; IF 1:100~1:1,000
Host	Rabbit
Clonality	Monoclonal
Clone No.	95B96E02
Isotype	IgG
Label	Unconjugated
Immunogen	A synthesized peptide derived from human MEK3
Format	Affinity purified monoclonal antibody supplied in PBS with 0.02% sodium azide and 50% glycerol, pH 7.3.
Storage	Shipped on wet ice. Store at -20°C. Stable for 12 months from date of receipt. Aliquoting is unnecessary for -20°C storage.
Precautions	[KD Validated] Anti-MAP2K3 Rabbit mAb [95B96E02] is for research use only and not for use in diagnostic or therapeutic procedures.

Protein Information

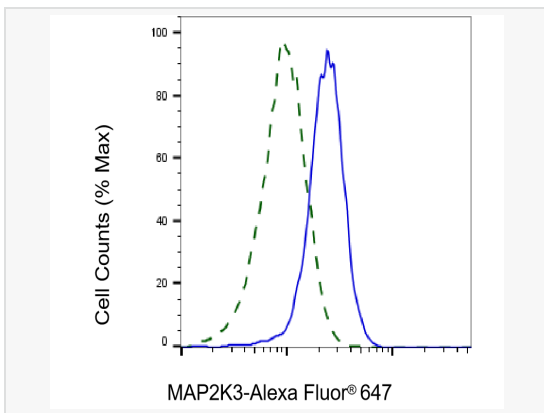
Synonyms	MAP2K3; Mitogen-Activated Protein Kinase Kinase 3; MEK3; MKK3; Stress-Activated Protein Kinase Kinase 2; MAP Kinase Kinase 3; MAPK/ERK Kinase 3; MAPKK3; SAPKK2; PRKMK3; Dual Specificity Mitogen-Activated Protein Kinase Kinase 3; SAPK Kinase 2; EC 2.7.12.2; SAPKK-2; MAPKK 3; MEK 3; Dual Specificity Mitogen Activated Protein Kinase Kinase 3; SKK2.
Calculated MW	Calculated MW: 39 kDa, Observed MW: 36 kDa
Uniprot ID	P46734
Gene ID	5606
Background	Dual specificity kinase. Is activated by cytokines and environmental stress in vivo. Catalyzes the concomitant phosphorylation of a threonine and a tyrosine residue in the MAP kinase p38.



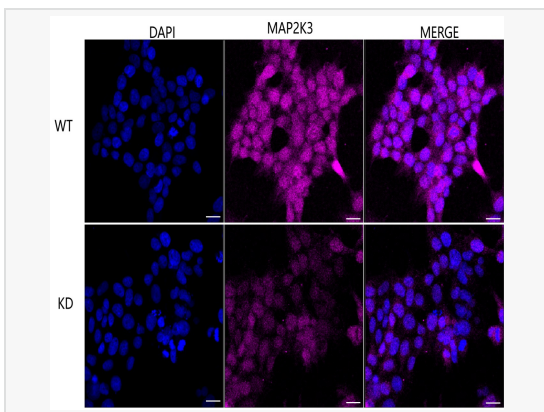
Western blotting analysis using MAP2K3 antibody (R021751). Total cell lysates (30 μ g) from various cell lines were loaded and separated by SDS-PAGE. The blot was incubated with MAP2K3 antibody (R021751, 1:5,000) and HRP-conjugated goat anti-rabbit secondary antibody (1:20,000) respectively. Image was developed using ECL Substrate Kit.



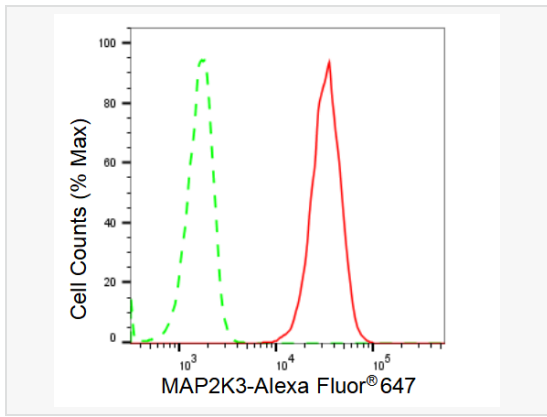
Western blotting analysis using MAP2K3 antibody (R021751). MAP2K3 expression in wild type (WT) and MAP2K3 shRNA knockdown (KD) HeLa cells with 30 μ g of total cell lysates. Hsp90 α serves as a loading control. The blot was incubated with MAP2K3 antibody (R021751, 1:5,000) and HRP-conjugated goat anti-rabbit secondary antibody (1:20,000) respectively. Image was developed using ECL Substrate Kit.



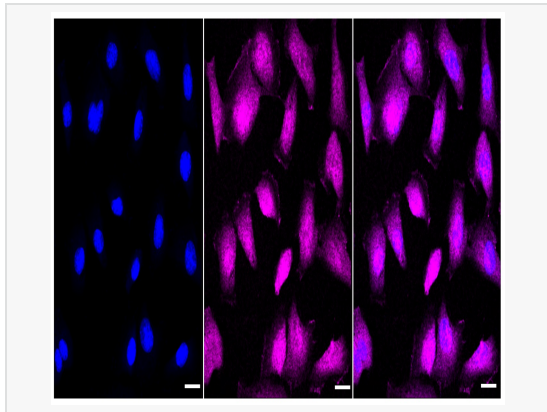
Validation of MAP2K3 knockdown using flow cytometry. Wild-type(WT, Blue) and knockdown(KD, Green) HeLa cells were stained with MAP2K3 antibody (R021751, 1:2,000) and analyzed using BD flow cytometer.



Immunocytochemical staining of HeLa cells using MAP2K3 antibody (R021751, 1:1,000). Top panel: wild-type (WT); Bottom panel: MAP2K3 shRNA knockdown (KD). Nuclei were stained blue with DAPI; MAP2K3 was stained magenta with Alexa Fluor[®] 647. Scale bar, 20 μ m.



Flow cytometric analysis of MAP2K3 expression in C2C12 cells using MAP2K3 antibody (R021751, 1:2,000). Green, isotype control; red, MAP2K3.



Immunocytochemical staining of C2C12 cells with MAP2K3 antibody (R021751, 1:1,000). Nuclei were stained blue with DAPI; MAP2K3 was stained magenta with Alexa Fluor® 647. Images were taken using Leica stellaris 5. Protein abundance based on laser Intensity and smart gain: Medium. Scale bar: 20 μ m.