

## [KD Validated] Anti-PIK3R1 Rabbit mAb

Purified Recombinant Rabbit Monoclonal Antibody

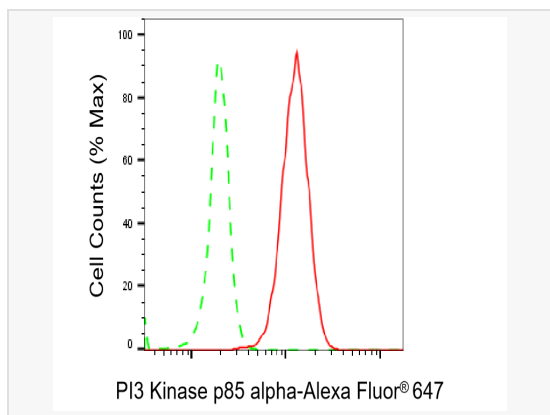
Catalog # R021750

### Product Information

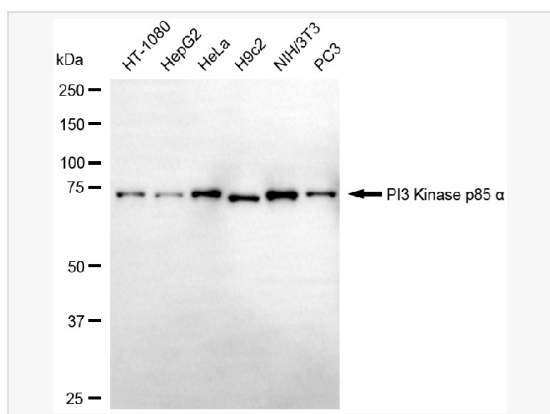
Application	WB, FC
Reactivity	Human, Mouse, Rat
Dilution	WB 1:2,000~1:10,000; FC 1:200~1:2,000
Host	Rabbit
Clonality	Monoclonal
Clone No.	79G03D56
Isotype	IgG
Label	Unconjugated
Immunogen	A synthesized peptide derived from human PI3 Kinase p85 alpha
Format	Affinity purified monoclonal antibody supplied in PBS with 0.02% sodium azide and 50% glycerol, pH 7.3.
Storage	Shipped on wet ice. Store at -20°C. Stable for 12 months from date of receipt. Aliquoting is unnecessary for -20°C storage.
Precautions	[KD Validated] Anti-PIK3R1 Rabbit mAb [79G03D56] is for research use only and not for use in diagnostic or therapeutic procedures.

### Protein Information

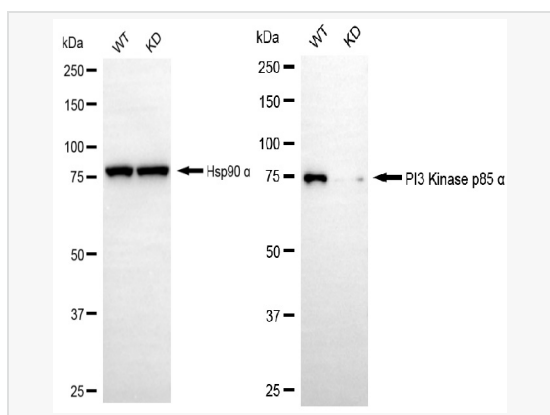
Synonyms	PIK3R1; Phosphoinositide-3-Kinase Regulatory Subunit 1; GRB1; P85-ALPHA; P85; Phosphatidylinositol 3-Kinase 85 KDa Regulatory Subunit Alpha; Phosphoinositide-3-Kinase, Regulatory Subunit 1 (Alpha); Phosphatidylinositol 3-Kinase Regulatory Subunit Alpha; Phosphoinositide-3-Kinase Regulatory Subunit Alpha; PtdIns-3-Kinase Regulatory Subunit Alpha; Growth Factor Receptor Bound 1; PI3K Regulatory Subunit Alpha; PI3-Kinase Subunit P85-Alpha; PI3 Kinase-Associated P85; P85alpha; Phosphatidylinositol 3-Kinase, Regulatory Subunit, Polypeptide 1 (P85 Alpha); Phosphatidylinositol 3-Kinase-Associated P-85 Alpha; PtdIns-3-Kinase Regulatory Subunit P85-Alpha; PI3-Kinase Regulatory Subunit Alpha; P85ALPHA; IMD36; AGM7.
Calculated MW	Calculated MW: 84 kDa; Observed MW: 75 kDa
Uniprot ID	P27986
Gene ID	5295
Background	Binds to activated (phosphorylated) protein-Tyr kinases, through its SH2 domain, and acts as an adapter, mediating the association of the p110 catalytic unit to the plasma membrane. Necessary for the insulin-stimulated increase in glucose uptake and glycogen synthesis in insulin-sensitive tissues. Plays an important role in signaling in response to FGFR1, FGFR2, FGFR3, FGFR4, KITLG/SCF, KIT, PDGFRA and PDGFRB. Likewise, plays a role in ITGB2 signaling.
Tissue Location	Isoform 2 is expressed in skeletal muscle and brain, and at lower levels in kidney and cardiac muscle. Isoform 2 and isoform 4 are present in skeletal muscle (at protein level).



Flow cytometric analysis of PI3 Kinase p85 alpha expression in C2C12 cells using PI3 Kinase p85 alpha antibody (R021750, 1:2,000). Green, isotype control; red, PI3 Kinase p85 alpha.



Western blotting analysis using PI3 Kinase p85 alpha antibody (R021750). Total cell lysates (30 µg) from various cell lines were loaded and separated by SDS-PAGE. The blot was incubated with PI3 Kinase p85 alpha antibody (R021750, 1:10,000) and HRP-conjugated goat anti-rabbit secondary antibody (1:20,000) respectively. Image was developed using ECL Substrate Kit.



Western blotting analysis using PI3 Kinase p85 alpha antibody (R021750). PI3 Kinase p85 alpha expression in wild-type (WT) and PIK3R1 knockdown (KD) 293T cells with 20 µg of total cell lysates. Hsp90 α serves as a loading control. The blot was incubated with PI3 Kinase p85 alpha antibody (R021750, 1:5,000) and HRP-conjugated goat anti-rabbit secondary antibody (1:20,000) respectively. Image was developed using ECL Substrate Kit.