

[KD Validated] Anti-MAP3K7 Rabbit mAb

Purified Recombinant Rabbit Monoclonal Antibody

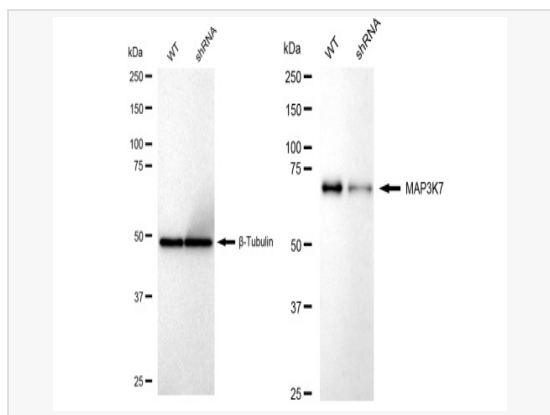
Catalog # R021749

Product Information

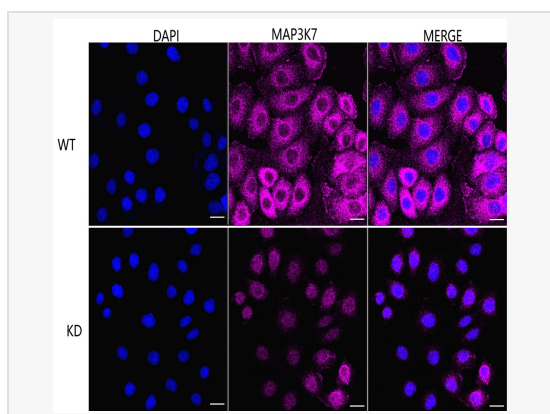
Application	WB, FC, IF (Cell)/ICC
Reactivity	Human, Mouse, Rat
Dilution	WB 1:1,000~1:5,000; FC 1:200~1:2,000; IF 1:100~1:1,000
Host	Rabbit
Clonality	Monoclonal
Clone No.	81S46L64
Isotype	IgG
Label	Unconjugated
Immunogen	A synthesized peptide derived from human TAK1
Format	Affinity purified monoclonal antibody supplied in PBS with 0.02% sodium azide and 50% glycerol, pH 7.3.
Storage	Shipped on wet ice. Store at -20°C. Stable for 12 months from date of receipt. Aliquoting is unnecessary for -20°C storage.
Precautions	[KD Validated] Anti-MAP3K7 Rabbit mAb [81S46L64] is for research use only and not for use in diagnostic or therapeutic procedures.

Protein Information

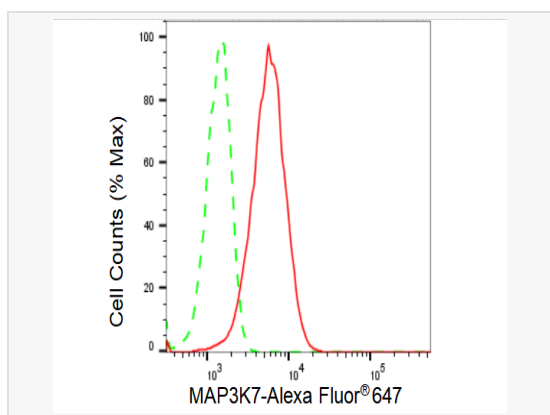
Synonyms	MAP3K7; Mitogen-Activated Protein Kinase Kinase Kinase 7; MEKK7; TAK1; Transforming Growth Factor-Beta-Activated Kinase 1; TGF-Beta Activated Kinase 1; EC 2.7.11.25; TGF-Beta-Activated Kinase 1; EC 2.7.11; TGF1a; CSCF; FMD2.
Calculated MW	Calculated MW: 67 kDa, Observed MW: 75 kDa
Uniprot ID	O43318
Gene ID	6885
Background	Component of a protein kinase signal transduction cascade. Mediator of TRAF6 and TGF-beta signal transduction. Activates IKBKB and MAPK8 in response to TRAF6 signaling. Stimulates NF-kappa-B activation and the p38 MAPK pathway. In osmotic stress signaling, plays a major role in the activation of MAPK8/JNK, but not that of NF-kappa-B.



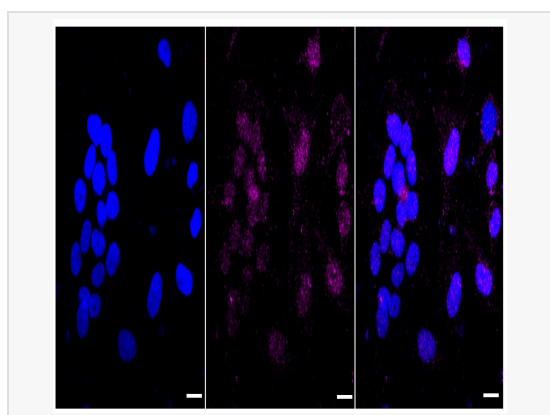
Western blotting analysis using MAP3K7 antibody (R021749). MAP3K7 expression in wild type (WT) and MAP3K7 shRNA knockdown (KD) HeLa cells with 30 μ g of total cell lysates. β -Tubulin serves as a loading control. The blot was incubated with MAP3K7 antibody (R021749, 1:5,000) and HRP-conjugated goat anti-rabbit secondary antibody (1:20,000) respectively. Image was developed using ECL Substrate Kit.



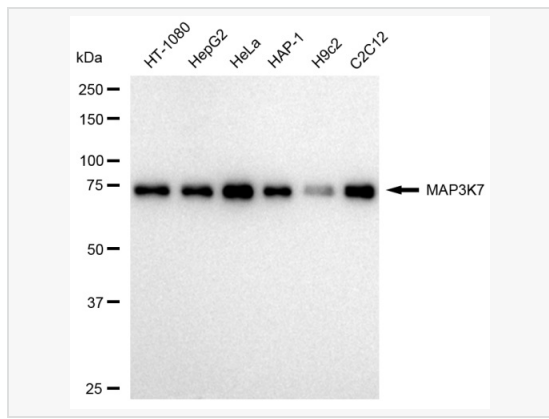
Immunocytochemical staining of HeLa cells using MAP3K7 antibody (R021749, 1:1,000). Top panel: wild-type (WT); Bottom panel: MAP3K7 shRNA knockdown (KD). Nuclei were stained blue with DAPI; MAP3K7 was stained magenta with Alexa Fluor® 647. Scale bar, 20 μ m. Permeabilization: Triton.



Flow cytometric analysis of MAP3K7 expression in HeLa cells using MAP3K7 antibody (R021749, 1:2,000). Green, isotype control; red, MAP3K7.



Immunocytochemical staining of HeLa cells with MAP3K7 antibody (R021749, 1:1,000). Nuclei were stained blue with DAPI; MAP3K7 was stained magenta with Alexa Fluor® 647. Images were taken using Leica stellaris 5. Protein abundance based on laser Intensity and smart gain: Very low. Scale bar: 20 μ m.



Western blotting analysis using MAP3K7 antibody (R021749). Total cell lysates (30 μ g) from various cell lines were loaded and separated by SDS-PAGE. The blot was incubated with MAP3K7 antibody (R021749, 1:5,000) and HRP-conjugated goat anti-rabbit secondary antibody (1:20,000) respectively. Image was developed using ECL Substrate Kit.