

[KD Validated] Anti-FURIN Rabbit mAb

Purified Recombinant Rabbit Monoclonal Antibody

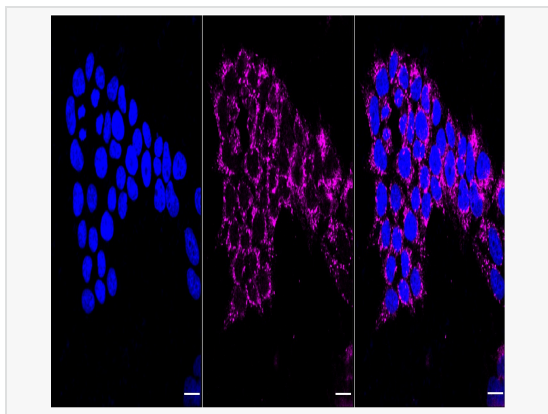
Catalog # R021747

Product Information

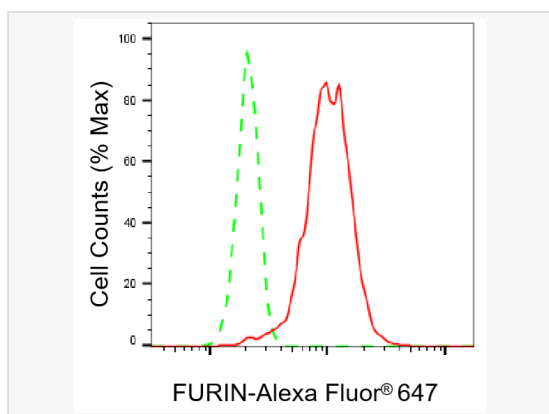
Application	WB, FC, IF (Cell)/ICC
Reactivity	Human, Mouse, Rat
Dilution	WB 1:1,000~1:5,000; FC 1:200~1:2,000; IF 1:100~1:1,000
Host	Rabbit
Clonality	Monoclonal
Clone No.	51C11B65
Isotype	IgG
Label	Unconjugated
Immunogen	A synthesized peptide derived from human Furin
Format	Affinity purified monoclonal antibody supplied in PBS with 0.02% sodium azide and 50% glycerol, pH 7.3.
Storage	Shipped on wet ice. Store at -20°C. Stable for 12 months from date of receipt. Aliquoting is unnecessary for -20°C storage.
Precautions	[KD Validated] Anti-FURIN Rabbit mAb [51C11B65] is for research use only and not for use in diagnostic or therapeutic procedures.

Protein Information

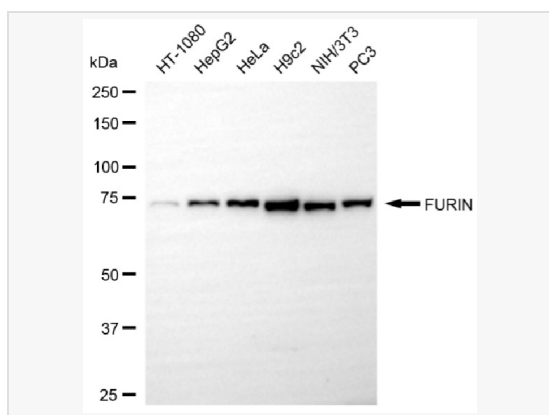
Synonyms	FURIN; Furin, Paired Basic Amino Acid Cleaving Enzyme; PCSK3; SPC1; PACE; FUR; Paired Basic Amino Acid Residue-Cleaving Enzyme 3; Proprotein Convertase Subtilisin/Kexin 3; Subtilisin-Like Proprotein Convertase 1; EC 3.4.21.75; Furin; Paired Basic Amino Acid Cleaving Enzyme (Furin, Membrane Associated Receptor Protein); Furin (Paired Basic Amino Acid Cleaving Enzyme); Proprotein Convertase Subtilisin/Kexin Type 3; Furin, Membrane Associated Receptor Protein; Dibasic Processing Enzyme; Dibasic-Processing Enzyme; FES Upstream Region; EC 3.4.21.
Calculated MW	Calculated MW: 87 kDa, Observed MW: 75 kDa
Uniprot ID	P09958
Gene ID	5045
Background	Furin is likely to represent the ubiquitous endoprotease activity within constitutive secretory pathways and capable of cleavage at the RX(K/R)R consensus motif.
Cellular Location	Golgi apparatus > trans-Golgi network membrane. Cell membrane. Shuttles between the trans-Golgi network and the cell surface. Propeptide cleavage is a prerequisite for exit of furin molecules out of the endoplasmic reticulum (ER). A second cleavage within the propeptide occurs in the trans Golgi network (TGN), followed by the release of the propeptide and the activation of furin.
Tissue Location	Seems to be expressed ubiquitously.



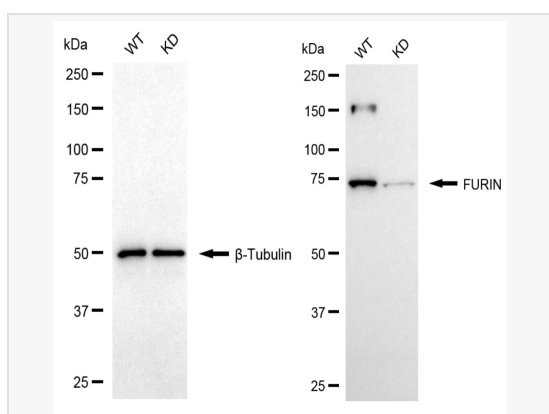
Immunocytochemical staining of HeLa cells with FURIN antibody (R021747, 1:1,000). Nuclei were stained blue with DAPI; FURIN was stained magenta with Alexa Fluor® 647. Images were taken using Leica stellaris 5. Protein abundance based on laser Intensity and smart gain: Medium. Scale bar, 20 µm.



Flow cytometric analysis of FURIN expression in HeLa cells using FURIN antibody (R021747, 1:2,000). Green, isotype control; red, FURIN.



Western blotting analysis using FURIN antibody (R021747). Total cell lysates (30 µg) from various cell lines were loaded and separated by SDS-PAGE. The blot was incubated with FURIN antibody (R021747, 1:5,000) and HRP-conjugated goat anti rabbit secondary antibody (1:20,000) respectively. Image was developed using ECL Substrate Kit.



Western blotting analysis using FURIN antibody (R021747). FURIN expression in wild-type (WT) and FURIN knockdown (KD) HeLa cells with 20 µg of total cell lysates. β-Tubulin serves as a loading control. The blot was incubated with FURIN antibody (R021747, 1:5,000) and HRP-conjugated goat anti-rabbit secondary antibody (1:20,000) respectively. Image was developed using ECL Substrate Kit.