

[KD Validated] Anti-PXN Rabbit mAb

Purified Recombinant Rabbit Monoclonal Antibody

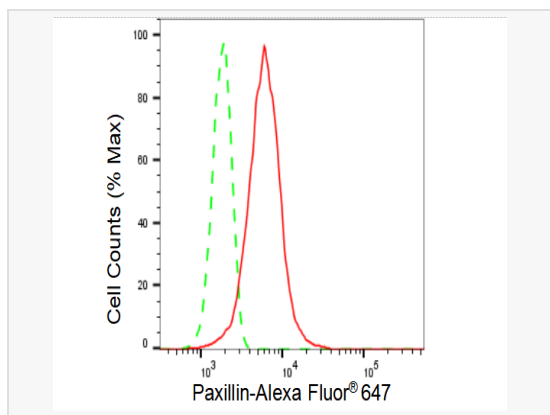
Catalog # R021745

Product Information

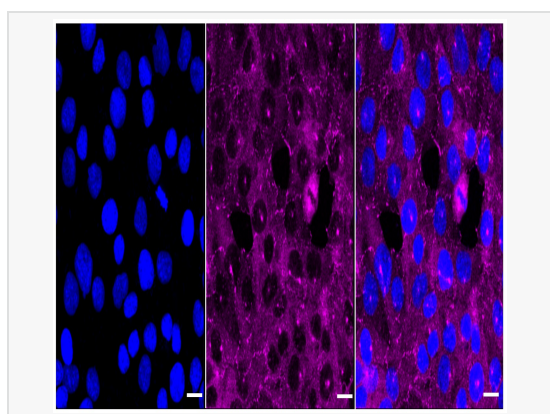
Application	WB, FC, IF (Cell)/ICC
Reactivity	Human, Mouse, Rat
Dilution	WB 1:1,000~1:5,000; FC 1:200~1:2,000; IF 1:100~1:1,000
Host	Rabbit
Clonality	Monoclonal
Clone No.	89F34C75
Isotype	IgG
Label	Unconjugated
Immunogen	A synthesized peptide derived from human Paxillin
Format	Affinity purified monoclonal antibody supplied in PBS with 0.02% sodium azide and 50% glycerol, pH 7.3.
Storage	Shipped on wet ice. Store at -20°C. Stable for 12 months from date of receipt. Aliquoting is unnecessary for -20°C storage.
Precautions	[KD Validated] Anti-PXN Rabbit mAb [89F34C75] is for research use only and not for use in diagnostic or therapeutic procedures.

Protein Information

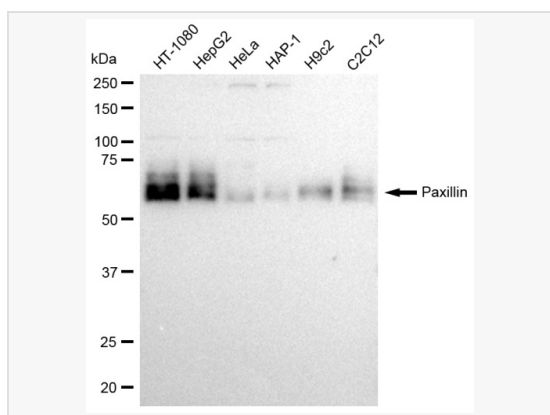
Synonyms	PXN; Paxillin; Testicular Tissue Protein Li 134.
Calculated MW	Calculated MW: 65 kDa, Observed MW: 60 kDa
Uniprot ID	P49023
Gene ID	5829
Background	Cytoskeletal protein involved in actin-membrane attachment at sites of cell adhesion to the extracellular matrix (focal adhesion). PXN is a multi-domain cytoskeletal protein that localizes primarily to focal adhesion sites to the extracellular matrix. Phosphorylated by focal adhesion kinase (FAK) and is a component of integrin signaling. Its phosphorylation provides docking sites for recruitment of signaling molecules to focal adhesions.



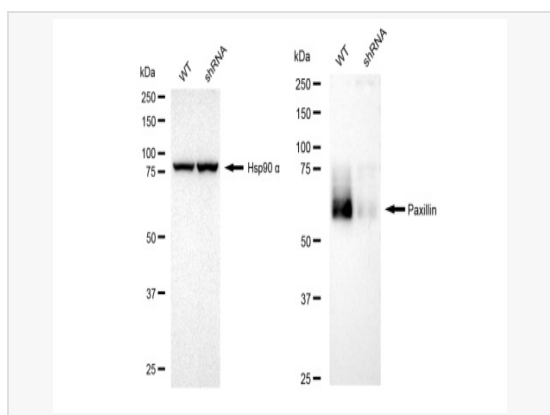
Flow cytometric analysis of Paxillin expression in HT-1080 cells using Paxillin antibody (R021745, 1:2,000). Green, isotype control; red, Paxillin.



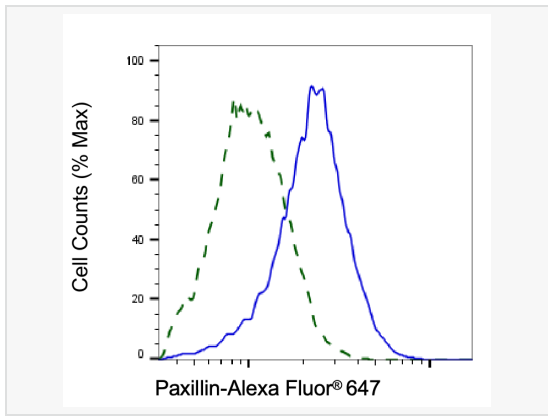
Immunocytochemical staining of HT-1080 cells with Paxillin antibody (R021745, 1:1,000). Nuclei were stained blue with DAPI; Paxillin was stained magenta with Alexa Fluor® 647. Images were taken using Leica stellaris 5. Protein abundance based on laser Intensity and smart gain: High. Scale bar: 20 µm.



Western blotting analysis using Paxillin antibody (R021745). Total cell lysates (30 µg) from various cell lines were loaded and separated by SDS-PAGE. The blot was incubated with Paxillin antibody (R021745, 1:5,000) and HRP-conjugated goat anti-rabbit secondary antibody (1:20,000) respectively. Image was developed using ECL Substrate Kit.



Western blotting analysis using Paxillin antibody (R021745). Paxillin expression in wild type (WT) and Paxillin shRNA knockdown (KD) HeLa cells with 30 µg of total cell lysates. Hsp90 α serves as a loading control. The blot was incubated with Paxillin antibody (R021745, 1:5,000) and HRP-conjugated goat anti-rabbit secondary antibody (1:20,000) respectively. Image was developed using ECL Substrate Kit.



Validation of Paxillin knockdown using flow cytometry. Wild-type(WT, Blue) and knockdown(KD, Green) HeLa cells were stained with Paxillin antibody (R021745, 1:2,000) and analyzed using BD flow cytometer.