

[KD Validated] Anti-CAP1 Rabbit mAb

Purified Recombinant Rabbit Monoclonal Antibody

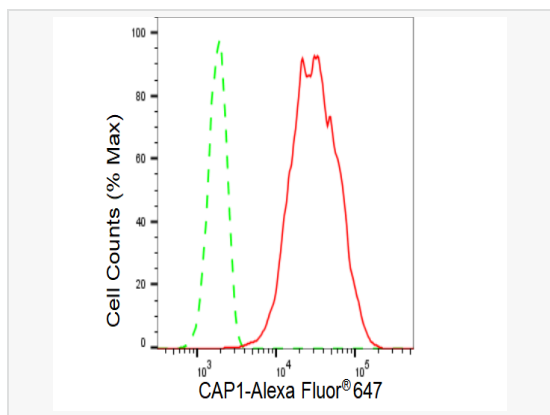
Catalog # R021716

Product Information

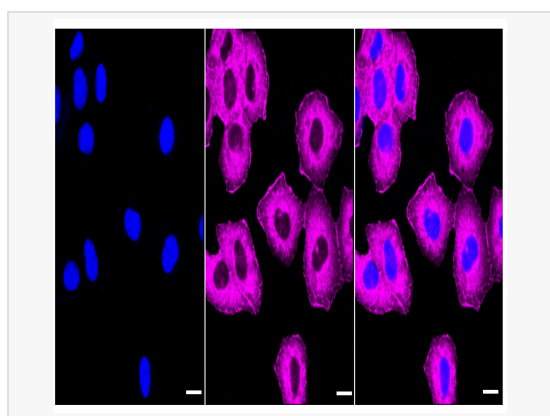
Application	WB, FC, IF (Cell)/ICC
Reactivity	Human
Dilution	WB 1:1,000~1:5,000; FC 1:200~1:2,000; IF 1:100~1:1,000
Host	Rabbit
Clonality	Monoclonal
Clone No.	11A51C24
Isotype	IgG
Label	Unconjugated
Immunogen	A synthesized peptide derived from CAP1
Format	Affinity purified monoclonal antibody supplied in PBS with 0.02% sodium azide and 50% glycerol, pH 7.3.
Storage	Shipped on wet ice. Store at -20°C. Stable for 12 months from date of receipt. Aliquoting is unnecessary for -20°C storage.
Precautions	[KD Validated] Anti-CAP1 Rabbit mAb [11A51C24] is for research use only and not for use in diagnostic or therapeutic procedures.

Protein Information

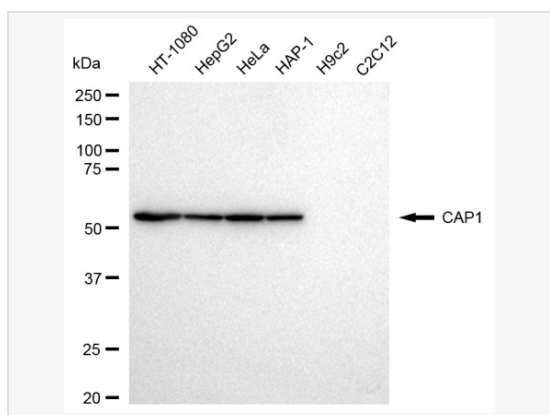
Synonyms	CAP1; Cyclase Associated Actin Cytoskeleton Regulatory Protein 1; CAP; Adenylate Cyclase Associated Protein 1; Adenylyl Cyclase-Associated Protein 1; CAP, Adenylate Cyclase-Associated Protein 1 (Yeast); Testis Secretory Sperm-Binding Protein Li 218p; CAP, Adenylate Cyclase-Associated Protein 1; CAP1-PEN; CAP 1.
Calculated MW	Calculated MW: 52 kDa, Observed MW: 55 kDa
Uniprot ID	Q01518
Gene ID	10487
Background	Directly regulates filament dynamics and has been implicated in a number of complex developmental and morphological processes, including mRNA localization and the establishment of cell polarity.



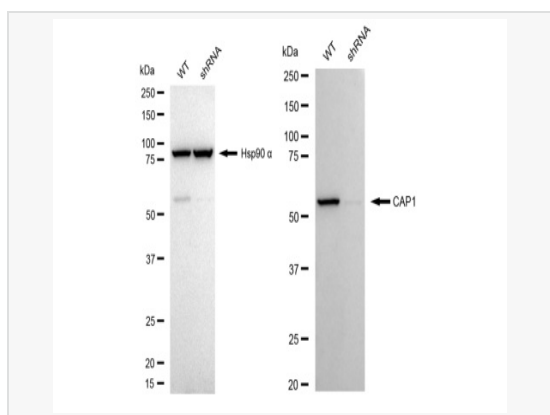
Flow cytometric analysis of CAP1 expression in HT-1080 cells using CAP1 antibody (R021716, 1:2,000). Green, isotype control; red, CAP1.



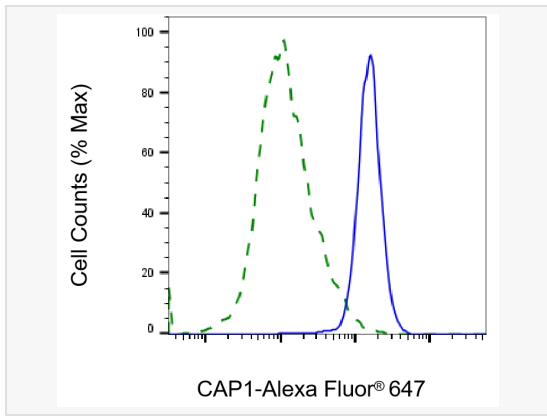
Immunocytochemical staining of HT-1080 cells with CAP1 antibody (R021716, 1:1,000). Nuclei were stained blue with DAPI; CAP1 was stained magenta with Alexa Fluor® 647. Images were taken using Leica stellaris 5. Protein abundance based on laser Intensity and smart gain: Medium. Scale bar: 20 µm.



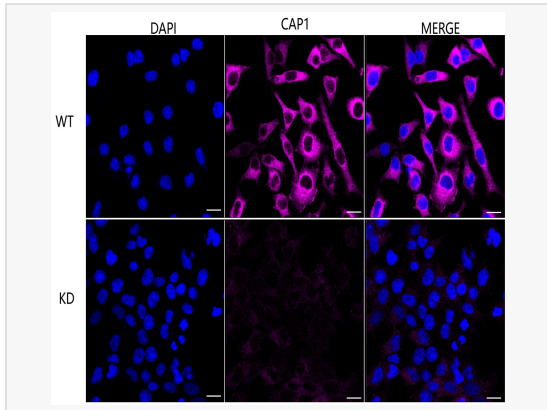
Western blotting analysis using CAP1 antibody (R021716). Total cell lysates (30 µg) from various cell lines were loaded and separated by SDS-PAGE. The blot was incubated with CAP1 antibody (R021716, 1:5,000) and HRP-conjugated goat anti-rabbit secondary antibody (1:20,000) respectively. Image was developed using ECL Substrate Kit.



Western blotting analysis using CAP1 antibody (R021716). CAP1 expression in wild type (WT) and CAP1 shRNA knockdown (KD) HeLa cells with 30 µg of total cell lysates. Hsp90 α serves as a loading control. The blot was incubated with CAP1 antibody (R021716, 1:5,000) and HRP-conjugated goat anti-rabbit secondary antibody (1:20,000) respectively. Image was developed using ECL Substrate Kit.



Validation of CAP1 knockdown using flow cytometry. Wild-type(WT, Blue) and knockdown(KD, Green) HeLa cells were stained with CAP1 antibody (R021716, 1:2,000) and analyzed using CytoFLEX.



Immunocytochemical staining of HeLa cells using CAP1 antibody (R021716, 1:1,000), Top panel: wild-type (WT); Bottom panel: CAP1 shRNA knockdown (KD). Nuclei were stained blue with DAPI; CAP1 was stained magenta with Alexa Fluor® 647. Scale bar, 20 μ m. Permeabilization: Triton.