

## [KD Validated] Anti-CTBP1 Rabbit mAb

Purified Recombinant Rabbit Monoclonal Antibody

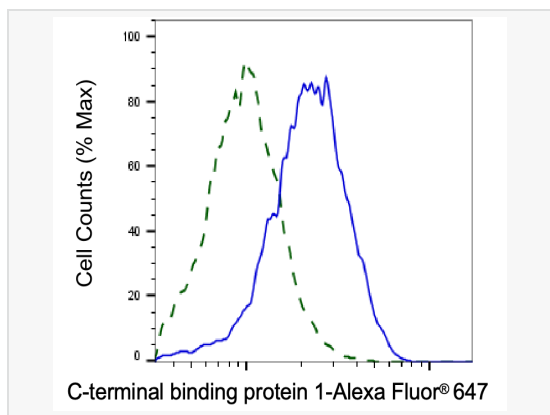
Catalog # R021713

### Product Information

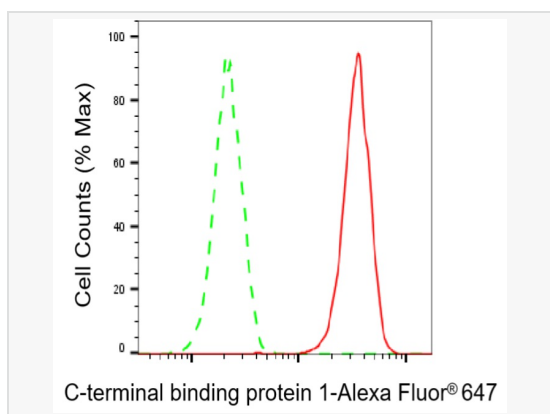
Application	WB, FC, IF (Cell)/ICC
Reactivity	Human, Mouse, Rat
Dilution	WB 1:1,000~1:5,000; FC 1:200~1:2,000; IF 1:100~1:1,000
Host	Rabbit
Clonality	Monoclonal
Clone No.	24E95G14
Isotype	IgG
Label	Unconjugated
Immunogen	A synthesized peptide derived from human CtBP1
Format	Affinity purified monoclonal antibody supplied in PBS with 0.02% sodium azide and 50% glycerol, pH 7.3.
Storage	Shipped on wet ice. Store at -20°C. Stable for 12 months from date of receipt. Aliquoting is unnecessary for -20°C storage.
Precautions	[KD Validated] Anti-CTBP1 Rabbit mAb [24E95G14] is for research use only and not for use in diagnostic or therapeutic procedures.

### Protein Information

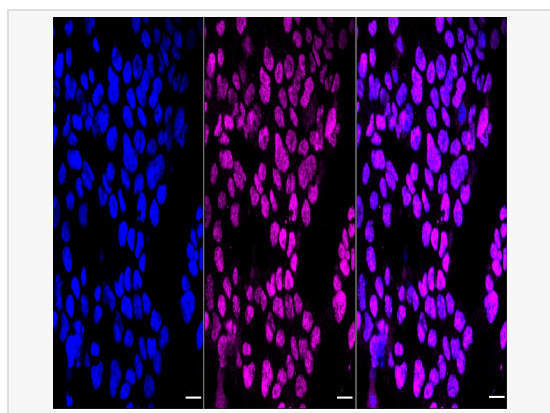
Synonyms	CTBP1; C-Terminal Binding Protein 1; BARS; Brefeldin A-Ribosylated Substrate; C-Terminal-Binding Protein 1; EC 1.1.1.158; EC 1.1.1.1.-; EC 1.1.1.1; HADDTS; CtBP1; CTBP.
Calculated MW	Calculated MW: 48 kDa; Observed MW: 47 kDa
Uniprot ID	Q13363
Gene ID	1487
Background	Involved in controlling the equilibrium between tubular and stacked structures in the Golgi complex. Functions in brown adipose tissue (BAT) differentiation. Corepressor targeting diverse transcription regulators such as GLIS2. Has dehydrogenase activity.



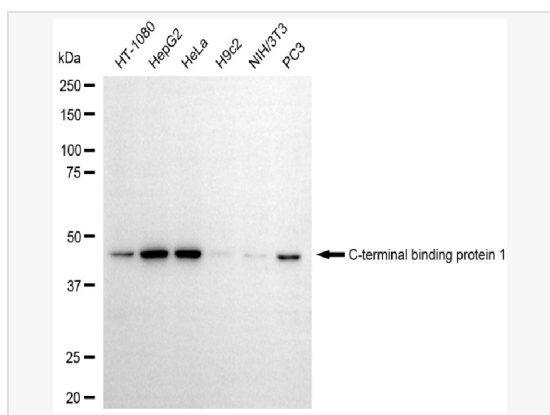
Validation of C-terminal binding protein 1 knockdown using flow cytometry. Wild-type(WT, Blue) and knockdown(KD, Green) HSHC cells were stained with C-terminal binding protein 1 antibody (R021713, 1:2,000) and analyzed using BD flow cytometer.



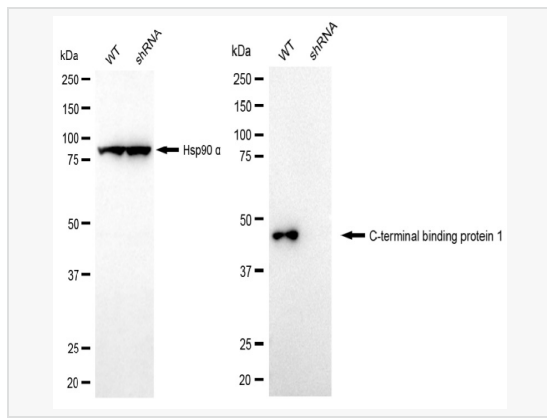
Flow cytometric analysis of C-terminal binding protein 1 expression in HAP-1 cells using C-terminal binding protein 1 antibody (R021713, 1:2,000). Green, isotype control; red, C-terminal binding protein 1.



Immunocytochemical staining of HAP1 cells with C-terminal binding protein 1 antibody (R021713, 1:1,000). Nuclei were stained blue with DAPI; C-terminal binding protein 1 was stained magenta with Alexa Fluor® 647. Images were taken using Leica stellaris 5. Protein abundance based on laser Intensity and smart gain: Medium. Scale bar, 20  $\mu$ m.



Western blotting analysis using C-terminal binding protein 1 antibody (R021713). Total cell lysates (30  $\mu$ g) from various cell lines were loaded and separated by SDS-PAGE. The blot was incubated with C-terminal binding protein 1 antibody (R021713, 1:5,000) and HRP-conjugated goat anti-rabbit secondary antibody (1:20,000) respectively. Image was developed using ECL Substrate Kit.



Western blotting analysis using C-terminal binding protein 1 antibody (R021713). C-terminal binding protein 1 expression in wild-type (WT) and C-terminal binding protein 1 (CTBP1) shRNA knockdown (KD) HSHC cells with 20  $\mu$ g of total cell lysates. Hsp90  $\alpha$  serves as a loading control. The blot was incubated with C-terminal binding protein 1 antibody (R021713, 1:5,000) and HRP-conjugated goat anti-rabbit secondary antibody (1:20,000) respectively. Image was developed using ECL Substrate Kit.