

## [KD Validated] Anti-BCL2L1 Rabbit mAb

Purified Recombinant Rabbit Monoclonal Antibody

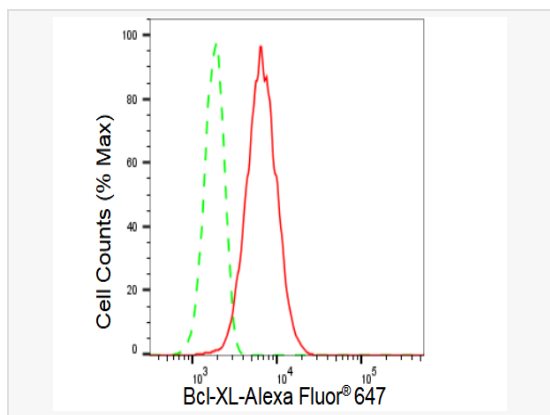
Catalog # R021705

### Product Information

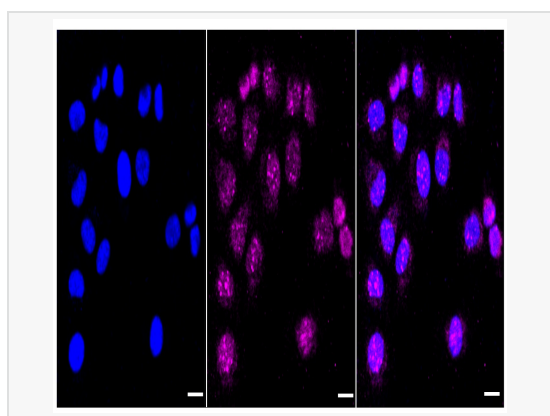
Application	WB, FC, IF (Cell)/ICC
Reactivity	Human, Mouse, Rat
Dilution	WB 1:1,000~1:5,000; FC 1:200~1:2,000; IF 1:100~1:1,000
Host	Rabbit
Clonality	Monoclonal
Clone No.	86N68E65
Isotype	IgG
Label	Unconjugated
Immunogen	A synthesized peptide derived from human Bcl-XL
Format	Affinity purified monoclonal antibody supplied in PBS with 0.02% sodium azide and 50% glycerol, pH 7.3.
Storage	Shipped on wet ice. Store at -20°C. Stable for 12 months from date of receipt. Aliquoting is unnecessary for -20°C storage.
Precautions	[KD Validated] Anti-BCL2L1 Rabbit mAb [86N68E65] is for research use only and not for use in diagnostic or therapeutic procedures.

### Protein Information

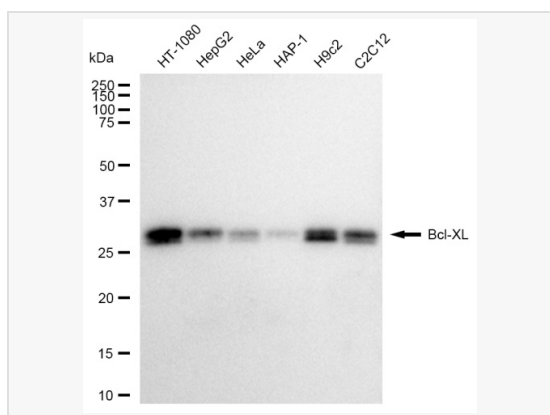
Synonyms	BCL2L1; BCL2 Like 1; BCL2L; BCLX; PPP1R52; Protein Phosphatase 1, Regulatory Subunit 52; Apoptosis Regulator Bcl-X; Bcl-2-Like Protein 1; Bcl-X; BCL-XL/S; Bcl2-L-1; Bcl-XL; Bcl-XS; BCL-XL; BCL-XS; BCL-X.
Calculated MW	Calculated MW: 26 kDa, Observed MW: 26 kDa
Uniprot ID	Q07817
Gene ID	598
Background	The protein encoded by this gene belongs to the BCL-2 protein family. BCL-2 family members form hetero- or homodimers and act as anti- or pro-apoptotic regulators that are involved in a wide variety of cellular activities.



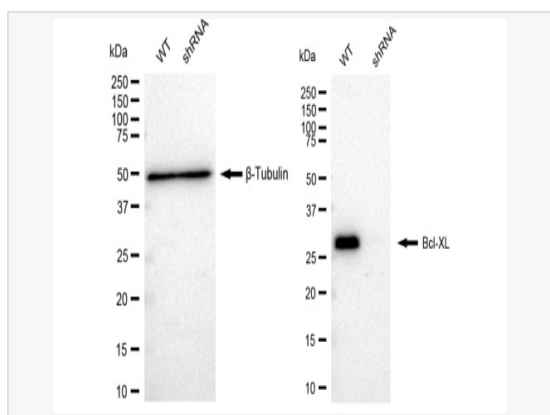
Flow cytometric analysis of Bcl-XL expression in HT-1080 cells using Bcl-XL antibody (R021705, 1:2,000). Green, isotype control; red, Bcl-XL.



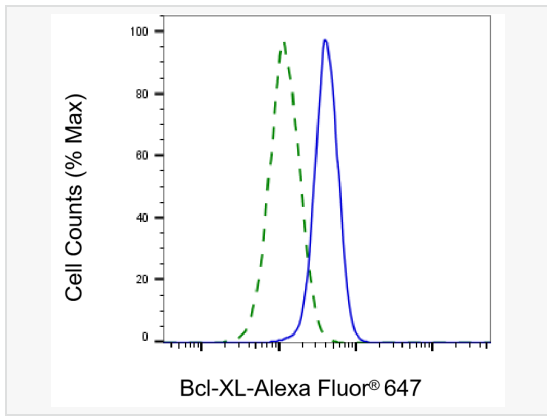
Immunocytochemical staining of HT-1080 cells with Bcl-XL antibody (R021705, 1:1,000). Nuclei were stained blue with DAPI; Bcl-XL was stained magenta with Alexa Fluor® 647. Images were taken using Leica stellaris 5. Protein abundance based on laser Intensity and smart gain: Low. Scale bar: 20 µm.



Western blotting analysis using Bcl-XL antibody (R021705). Total cell lysates (30 µg) from various cell lines were loaded and separated by SDS-PAGE. The blot was incubated with Bcl-XL antibody (R021705, 1:5,000) and HRP-conjugated goat anti-rabbit secondary antibody (1:20,000) respectively. Image was developed using ECL Substrate Kit.



Western blotting analysis using Bcl-XL antibody (R021705). Bcl-XL expression in wild type (WT) and Bcl-XL shRNA knockdown (KD) HeLa cells with 30 µg of total cell lysates. β-Tubulin serves as a loading control. The blot was incubated with Bcl-XL antibody (R021705, 1:5,000) and HRP-conjugated goat anti-rabbit secondary antibody (1:20,000) respectively. Image was developed using ECL Substrate Kit.



Validation of Bcl-XL knockdown using flow cytometry. Wild-type(WT, Blue) and knockdown(KD, Green) HeLa cells were stained with Bcl-XL antibody (R021705, 1:2,000) and analyzed using CytoFLEX.