

[KD Validated] Anti-FLNA Rabbit mAb

Purified Recombinant Rabbit Monoclonal Antibody

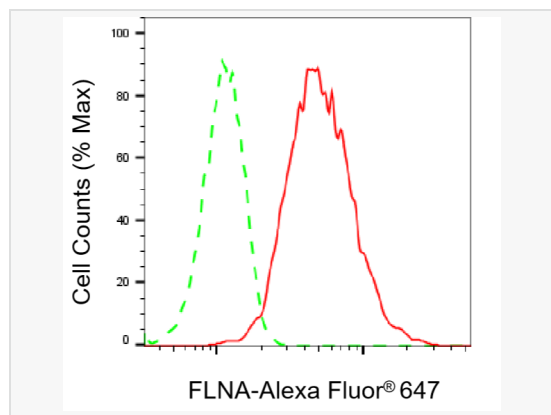
Catalog # R021688

Product Information

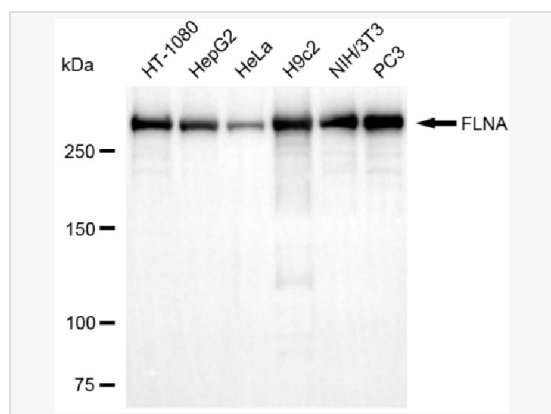
Application	WB, FC
Reactivity	Human, Mouse, Rat
Dilution	WB 1:2,000~1:10,000; FC 1:200~1:2,000
Host	Rabbit
Clonality	Monoclonal
Clone No.	36P28A28
Isotype	IgG
Label	Unconjugated
Immunogen	A synthesized peptide derived from human Filamin A
Format	Affinity purified monoclonal antibody supplied in PBS with 0.02% sodium azide and 50% glycerol, pH 7.3.
Storage	Shipped on wet ice. Store at -20°C. Stable for 12 months from date of receipt. Aliquoting is unnecessary for -20°C storage.
Precautions	[KD Validated] Anti-FLNA Rabbit mAb [36P28A28] is for research use only and not for use in diagnostic or therapeutic procedures.

Protein Information

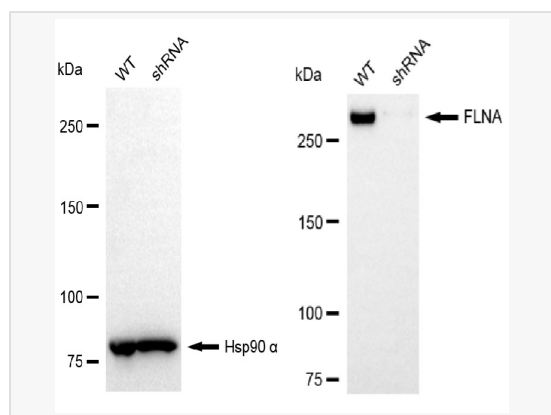
Synonyms	FLNA; Filamin A; ABP-280; FLN1; FLN; Endothelial Actin-Binding Protein; Actin Binding Protein 280; Non-Muscle Filamin; Filamin A, Alpha; Alpha-Filamin; Filamin-A; Filamin-1; FLN-A; OPD1; OPD2; Filamin A, Alpha (Actin Binding Protein 280); Epididymis Secretory Sperm Binding Protein; Actin-Binding Protein 280; Alpha Filamin; EC 2.1.1.43; EC 6.3.4.4; ABPX; CSBS; CVD1; FGS2; NHBP; XLVD; XMVD; FMD; MNS; OPD.
Calculated MW	Calculated MW: 281 kDa; Observed MW: 281 kDa
Uniprot ID	P21333
Gene ID	2316
Background	Promotes orthogonal branching of actin filaments and links actin filaments to membrane glycoproteins. Anchors various transmembrane proteins to the actin cytoskeleton and serves as a scaffold for a wide range of cytoplasmic signaling proteins. Interaction with FLNA may allow neuroblast migration from the ventricular zone into the cortical plate.



Flow cytometric analysis of FLNA expression in HepG2 cells using FLNA antibody (R021688, 1:2,000). Green, isotype control; red, FLNA.



Western blotting analysis using FLNA antibody (R021688). Total cell lysates (30 μ g) from various cell lines were loaded and separated by SDS-PAGE. The blot was incubated with FLNA antibody (R021688, 1:10,000) and HRP-conjugated goat anti-rabbit secondary antibody (1:20,000) respectively. Image was developed using ECL Substrate Kit.



Western blotting analysis using FLNA antibody (R021688). FLNA expression in wild-type (WT) and FLNA shRNA knockdown (KD) HeLa cells with 20 μ g of total cell lysates. Hsp90 α serves as a loading control. The blot was incubated with FLNA antibody (R021688, 1:5,000) and HRP-conjugated goat anti-rabbit secondary antibody (1:20,000) respectively. Image was developed using ECL Substrate Kit.