

[KD Validated] Anti-ATG9A Rabbit mAb

Purified Recombinant Rabbit Monoclonal Antibody

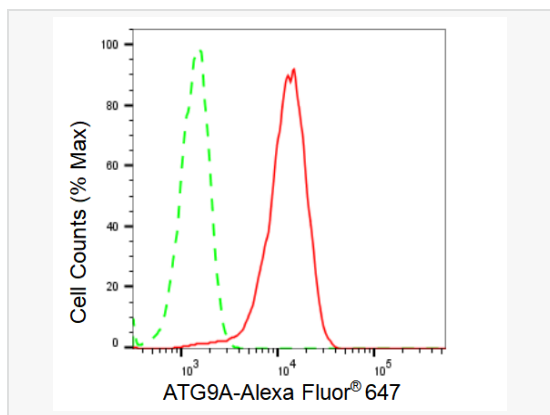
Catalog # R021681

Product Information

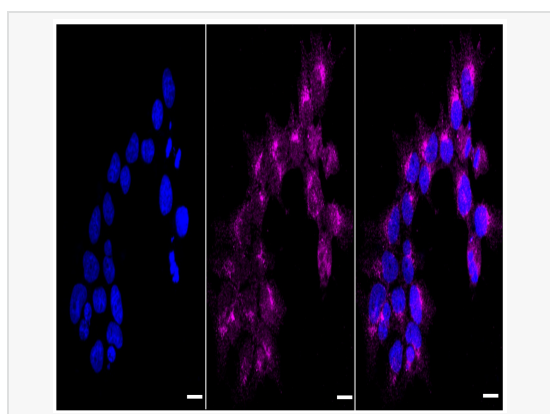
Application	WB, FC, IF (Cell)/ICC
Reactivity	Human, Mouse, Rat
Dilution	WB 1:1,000~1:5,000; FC 1:200~1:2,000; IF 1:100~1:1,000
Host	Rabbit
Clonality	Monoclonal
Clone No.	66N10B31
Isotype	IgG
Label	Unconjugated
Immunogen	A synthesized peptide derived from human ATG9A
Format	Affinity purified monoclonal antibody supplied in PBS with 0.02% sodium azide and 50% glycerol, pH 7.3.
Storage	Shipped on wet ice. Store at -20°C. Stable for 12 months from date of receipt. Aliquoting is unnecessary for -20°C storage.
Precautions	[KD Validated] Anti-ATG9A Rabbit mAb [66N10B31] is for research use only and not for use in diagnostic or therapeutic procedures.

Protein Information

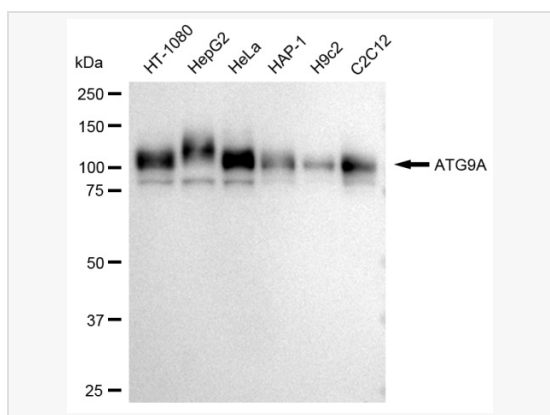
Synonyms	ATG9A; Autophagy Related 9A; APG9L1; Autophagy-Related Protein 9A; APG9-Like 1; FLJ22169; MATG9; ATG9 Autophagy Related 9 Homolog A (S. Cerevisiae); APG9 Autophagy 9-Like 1 (S. Cerevisiae); ATG9 Autophagy Related 9 Homolog A; Autophagy 9-Like 1 Protein; APG9 Autophagy 9-Like 1; MGD3208.
Calculated MW	Calculated MW: 94 kDa, Observed MW: 94 kDa
Uniprot ID	Q7Z3C6
Gene ID	79065
Background	Acts upstream of or within autophagosome assembly. Located in endosome; phagophore assembly site; and trans-Golgi network.



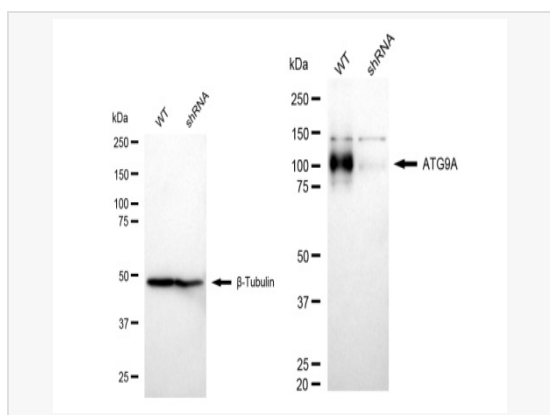
Flow cytometric analysis of ATG9A expression in HeLa cells using ATG9A antibody (R021681, 1:2,000). Green, isotype control; red, ATG9A.



Immunocytochemical staining of HeLa cells with ATG9A antibody (R021681, 1:1,000). Nuclei were stained blue with DAPI; ATG9A was stained magenta with Alexa Fluor® 647. Images were taken using Leica stellaris 5. Protein abundance based on laser Intensity and smart gain: Medium. Scale bar: 20 µm.



Western blotting analysis using ATG9A antibody (R021681). Total cell lysates (30 µg) from various cell lines were loaded and separated by SDS-PAGE. The blot was incubated with ATG9A antibody (R021681, 1:5,000) and HRP-conjugated goat anti-rabbit secondary antibody (1:20,000) respectively. Image was developed using ECL Substrate Kit.



Western blotting analysis using ATG9A antibody (R021681). ATG9A expression in wild type (WT) and ATG9A shRNA knockdown (KD) HeLa cells with 30 µg of total cell lysates. β-Tubulin serves as a loading control. The blot was incubated with ATG9A antibody (R021681, 1:5,000) and HRP-conjugated goat anti-rabbit secondary antibody (1:20,000) respectively. Image was developed using ECL Substrate Kit.