

## [KD Validated] Anti-CCNA1/2 Rabbit mAb

Purified Recombinant Rabbit Monoclonal Antibody

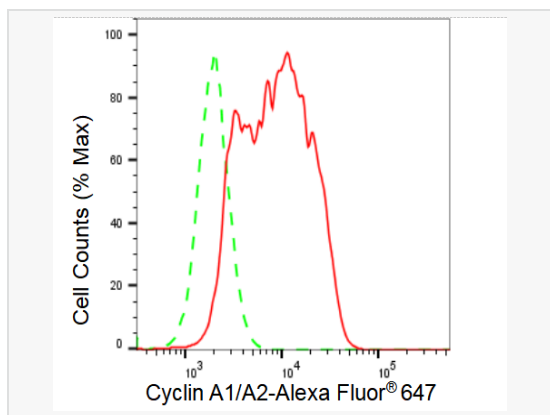
Catalog # R021676

### Product Information

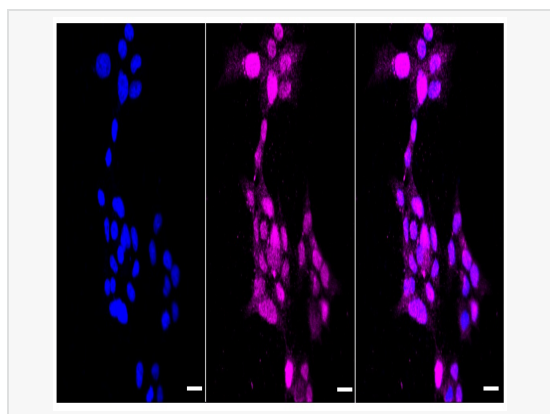
Application	WB, FC, IF (Cell)/ICC
Reactivity	Human, Mouse, Rat
Dilution	WB 1:1,000~1:5,000; FC 1:200~1:2,000; IF 1:100~1:1,000
Host	Rabbit
Clonality	Monoclonal
Clone No.	95K70G42
Isotype	IgG
Label	Unconjugated
Immunogen	A synthesized peptide derived from human Cyclin A1/A2
Format	Affinity purified monoclonal antibody supplied in PBS with 0.02% sodium azide and 50% glycerol, pH 7.3.
Storage	Shipped on wet ice. Store at -20°C. Stable for 12 months from date of receipt. Aliquoting is unnecessary for -20°C storage.
Precautions	[KD Validated] Anti-CCNA1/2 Rabbit mAb [95K70G42] is for research use only and not for use in diagnostic or therapeutic procedures.

### Protein Information

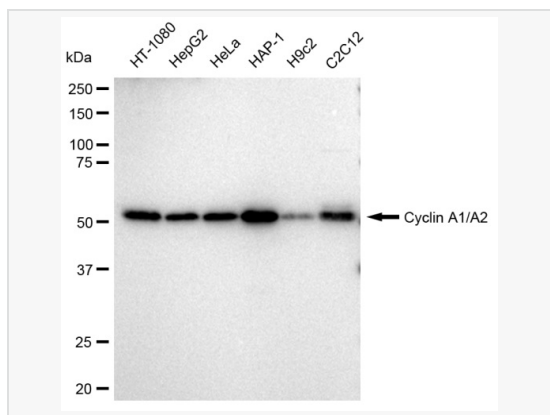
Synonyms	CCNA2; Cyclin A2; CCN1; CCNA; Cyclin-A2; Cyclin-A; Cyclin A; CCNA1; Cyclin A1; CT146; Cyclin-A1; Testicular Tissue Protein Li 34.
Calculated MW	Calculated MW: 52 kDa, Observed MW: 52 kDa
Uniprot ID	P20248, P78396
Gene ID	890,8900
Background	May primarily function in the control of the germline meiotic cell cycle and additionally in the control of mitotic cell cycle in some somatic cells. Essential for the control of the cell cycle at the G1/S (start) and the G2/M (mitosis) transitions.



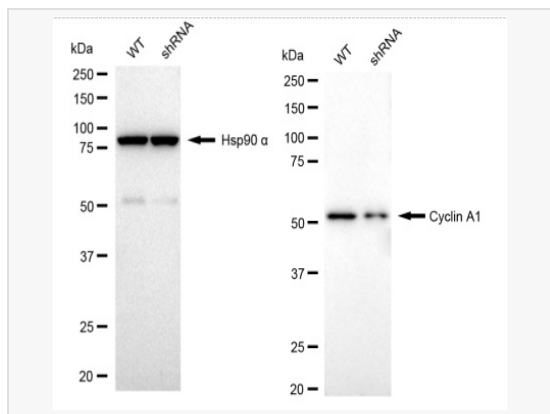
Flow cytometric analysis of Cyclin A1/A2 expression in HAP-1 cells using Cyclin A1/A2 antibody (R021676, 1:2,000). Green, isotype control; red, Cyclin A1/A2.



Immunocytochemical staining of HAP-1 cells with Cyclin A1/A2 antibody (R021676, 1:1,000). Nuclei were stained blue with DAPI; Cyclin A1/A2 was stained magenta with Alexa Fluor® 647. Images were taken using Leica stellaris 5. Protein abundance based on laser Intensity and smart gain: Medium. Scale bar: 20 µm.



Western blotting analysis using Cyclin A1/A2 antibody (R021676). Total cell lysates (30 µg) from various cell lines were loaded and separated by SDS-PAGE. The blot was incubated with Cyclin A1/A2 antibody (R021676, 1:5,000) and HRP-conjugated goat anti-rabbit secondary antibody (1:20,000) respectively. Image was developed using ECL Substrate Kit.



Western blotting analysis using Cyclin A1 antibody (R021676). Cyclin A1 expression in wild type (WT) and Cyclin A1 shRNA knockdown (KD) HeLa cells with 30 µg of total cell lysates. Hsp90 α serves as a loading control. The blot was incubated with Cyclin A1 antibody (R021676, 1:5,000) and HRP-conjugated goat anti-rabbit secondary antibody (1:20,000) respectively. Image was developed using ECL Substrate Kit.