

[KD Validated] Anti-CDC25C Rabbit mAb

Purified Recombinant Rabbit Monoclonal Antibody

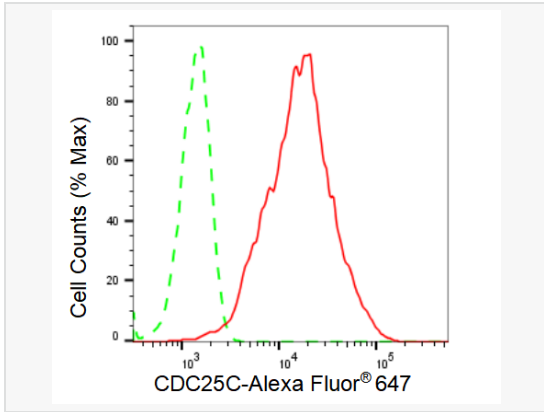
Catalog # R021674

Product Information

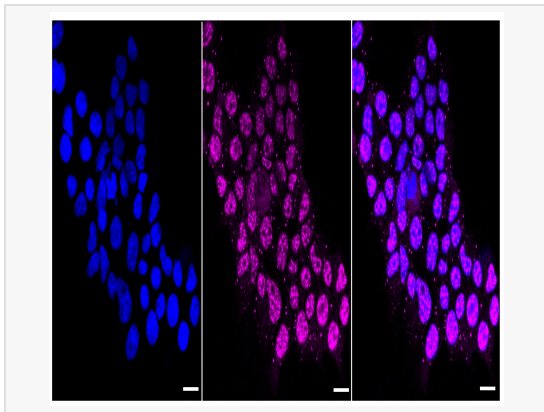
Application	WB, FC, IF (Cell)/ICC
Reactivity	Human
Dilution	WB 1:1,000~1:5,000; FC 1:200~1:2,000; IF 1:100~1:1,000
Host	Rabbit
Clonality	Monoclonal
Clone No.	64E93D38
Isotype	IgG
Label	Unconjugated
Immunogen	A synthesized peptide derived from human Cdc25C
Format	Affinity purified monoclonal antibody supplied in PBS with 0.02% sodium azide and 50% glycerol, pH 7.3.
Storage	Shipped on wet ice. Store at -20°C. Stable for 12 months from date of receipt. Aliquoting is unnecessary for -20°C storage.
Precautions	[KD Validated] Anti-CDC25C Rabbit mAb [64E93D38] is for research use only and not for use in diagnostic or therapeutic procedures.

Protein Information

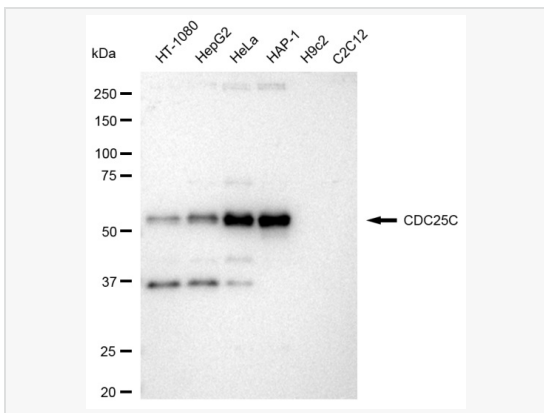
Synonyms	CDC25C; Cell Division Cycle 25C; M-Phase Inducer Phosphatase 3; PPP1R60; Protein Phosphatase 1, Regulatory Subunit 60; EC 3.1.3.48; CDC25; Dual Specificity Phosphatase CDC25C; Dual Specificity Phosphatase Cdc25C; Phosphotyrosine Phosphatase; CDC25 Homolog C (S. Pombe); Mitosis Inducer CDC25; CDC25 Homolog C.
Calculated MW	Calculated MW: 53 kDa, Observed MW: 60 kDa
Uniprot ID	P30307
Gene ID	995
Background	Functions as a dosage-dependent inducer in mitotic control. It is a tyrosine protein phosphatase required for progression of the cell cycle. It directly dephosphorylates CDK1 and activate its kinase activity.



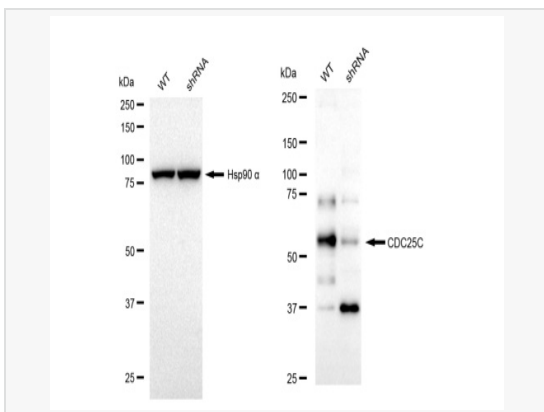
Flow cytometric analysis of CDC25C expression in HeLa cells using CDC25C antibody (R021674, 1:2,000). Green, isotype control; red, CDC25C.



Immunocytochemical staining of HeLa cells with CDC25C antibody (R021674, 1:1,000). Nuclei were stained blue with DAPI; CDC25C was stained magenta with Alexa Fluor® 647. Images were taken using Leica stellaris 5. Protein abundance based on laser Intensity and smart gain: Medium. Scale bar: 20 µm.



Western blotting analysis using CDC25C antibody (R021674). Total cell lysates (30 µg) from various cell lines were loaded and separated by SDS-PAGE. The blot was incubated with CDC25C antibody (R021674, 1:5,000) and HRP-conjugated goat anti-rabbit secondary antibody (1:20,000) respectively. Image was developed using ECL Substrate Kit.



Western blotting analysis using CDC25C antibody (R021674). CDC25C expression in wild type (WT) and CDC25C shRNA knockdown (KD) HeLa cells with 30 µg of total cell lysates. Hsp90 α serves as a loading control. The blot was incubated with CDC25C antibody (R021674, 1:5,000) and HRP-conjugated goat anti-rabbit secondary antibody (1:20,000) respectively. Image was developed using ECL Substrate Kit.