

## [KD Validated] Anti-CAPN2 Rabbit mAb

Purified Recombinant Rabbit Monoclonal Antibody

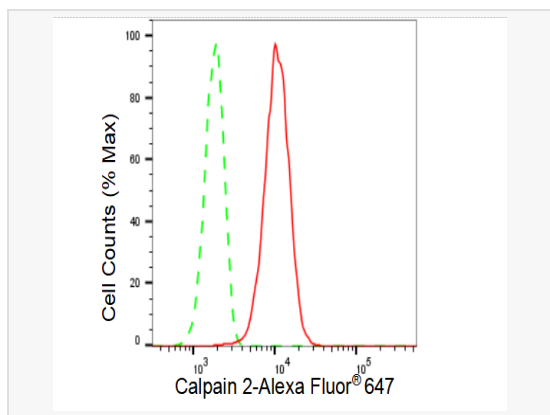
Catalog # R021659

### Product Information

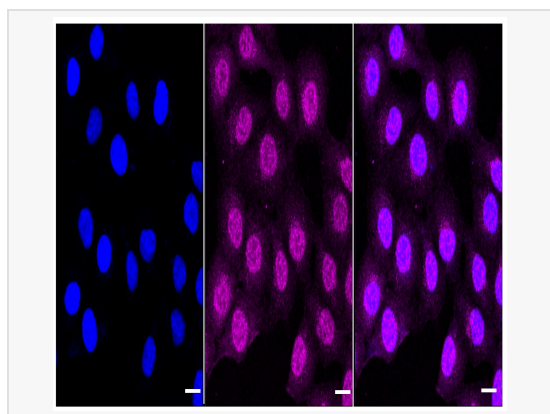
Application	WB, FC, IF (Cell)/ICC
Reactivity	Human, Mouse, Rat
Dilution	WB 1:1,000~1:5,000; FC 1:200~1:2,000; IF 1:100~1:1,000
Host	Rabbit
Clonality	Monoclonal
Clone No.	10K43C12
Isotype	IgG
Label	Unconjugated
Immunogen	A synthesized peptide derived from human Calpain 2
Format	Affinity purified monoclonal antibody supplied in PBS with 0.02% sodium azide and 50% glycerol, pH 7.3.
Storage	Shipped on wet ice. Store at -20°C. Stable for 12 months from date of receipt. Aliquoting is unnecessary for -20°C storage.
Precautions	[KD Validated] Anti-CAPN2 Rabbit mAb [10K43C12] is for research use only and not for use in diagnostic or therapeutic procedures.

### Protein Information

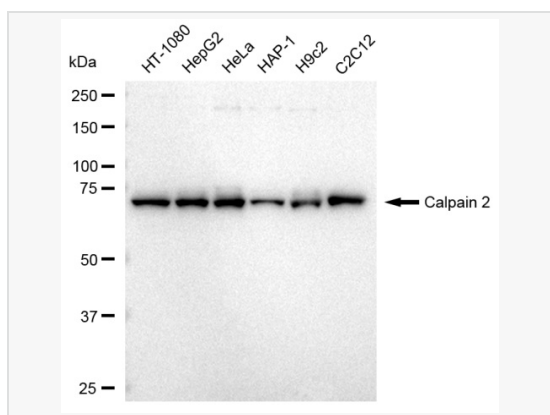
Synonyms	CAPN2; Calpain 2; CANPL2; MCANP; Calcium-Activated Neutral Proteinase; Calpain 2, (M/II) Large Subunit; Calpain-2 Catalytic Subunit; Millimolar-Calpain; Calpain M-Type; EC 3.4.22.53; M-Calpain; CANPml; CANP; Calpain 2, Large [Catalytic] Subunit; Calpain, Large Polypeptide L2; Calpain Large Polypeptide L2; Calpain 2, Large Subunit; Calpain-2 Large Subunit; EC 3.4.22; CANPML; CANP2.
Calculated MW	Calculated MW: 80 kDa, Observed MW: 73 kDa
Uniprot ID	P17655
Gene ID	824
Background	Calcium-regulated non-lysosomal thiol-protease which catalyze limited proteolysis of substrates involved in cytoskeletal remodeling and signal transduction.
Cellular Location	Cytoplasm. Cell membrane. Translocates to the plasma membrane upon Ca(2+) binding.
Tissue Location	Ubiquitous.



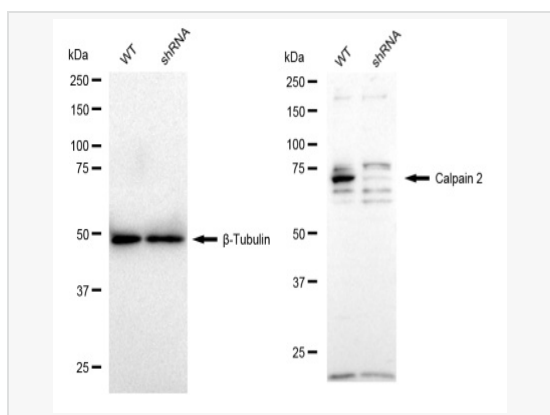
Flow cytometric analysis of Calpain 2 expression in HT-1080 cells using Calpain 2 antibody (R021659, 1:2,000). Green, isotype control; red, Calpain 2.



Immunocytochemical staining of HT-1080 cells with Calpain 2 antibody (R021659, 1:1,000). Nuclei were stained blue with DAPI; Calpain 2 was stained magenta with Alexa Fluor® 647. Images were taken using Leica stellaris 5. Protein abundance based on laser Intensity and smart gain: Medium. Scale bar: 20 µm.



Western blotting analysis using Calpain 2 antibody (R021659). Total cell lysates (30 µg) from various cell lines were loaded and separated by SDS-PAGE. The blot was incubated with Calpain 2 antibody (R021659, 1:5,000) and HRP-conjugated goat anti-rabbit secondary antibody (1:20,000) respectively. Image was developed using ECL Substrate Kit.



Western blotting analysis using Calpain 2 antibody (R021659). Calpain 2 expression in wild type (WT) and Calpain 2 shRNA knockdown (KD) HeLa cells with 30 µg of total cell lysates. β-Tubulin serves as a loading control. The blot was incubated with Calpain 2 antibody (R021659, 1:5,000) and HRP-conjugated goat anti-rabbit secondary antibody (1:20,000) respectively. Image was developed using ECL Substrate Kit.