

[KD Validated] Anti-ALPI Rabbit mAb

Purified Recombinant Rabbit Monoclonal Antibody

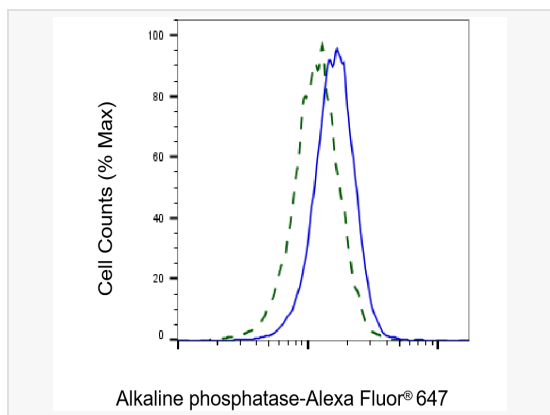
Catalog # R021633

Product Information

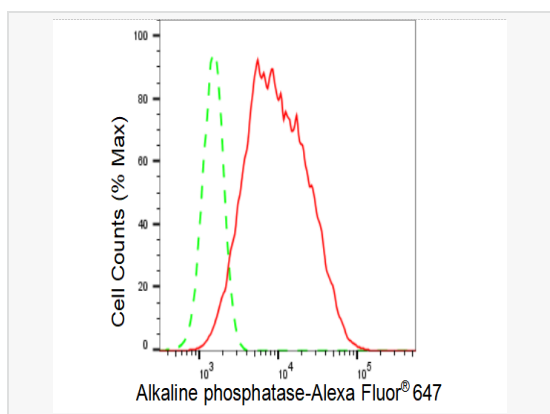
Application	WB, FC, IF (Cell)/ICC
Reactivity	Human
Dilution	WB 1:1,000~1:5,000; FC 1:200~1:2,000; IF 1:100~1:1,000
Host	Rabbit
Clonality	Monoclonal
Clone No.	58G23B97
Isotype	IgG
Label	Unconjugated
Immunogen	A synthesized peptide derived from human intestinal alkaline phosphatase
Format	Affinity purified monoclonal antibody supplied in PBS with 0.02% sodium azide and 50% glycerol, pH 7.3.
Storage	Shipped on wet ice. Store at -20°C. Stable for 12 months from date of receipt. Aliquoting is unnecessary for -20°C storage.
Precautions	[KD Validated] Anti-ALPI Rabbit mAb [58G23B97] is for research use only and not for use in diagnostic or therapeutic procedures.

Protein Information

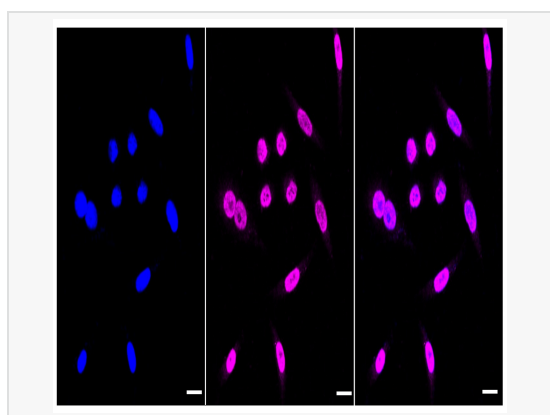
Synonyms	ALPI; Alkaline Phosphatase, Intestinal; IAP; Intestinal Alkaline Phosphatase; Intestinal-Type Alkaline Phosphatase; EC 3.1.3.1; Alkaline Phosphomonoesterase; Glycerophosphatase; Kasahara Isozyme.
Calculated MW	Calculated MW: 57 kDa, Observed MW: 68 kDa
Uniprot ID	P09923
Gene ID	248



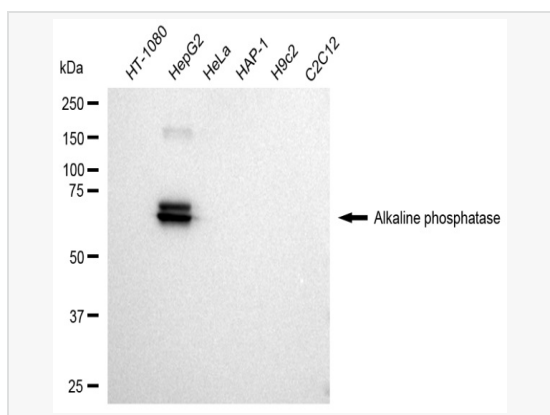
Validation of Alkaline phosphatase knockdown using flow cytometry. Wild-type(WT, Blue) and knockdown(KD, Green) HeLa cells were stained with Alkaline phosphatase antibody (R021633, 1:2,000) and analyzed using BD flow cytometer.



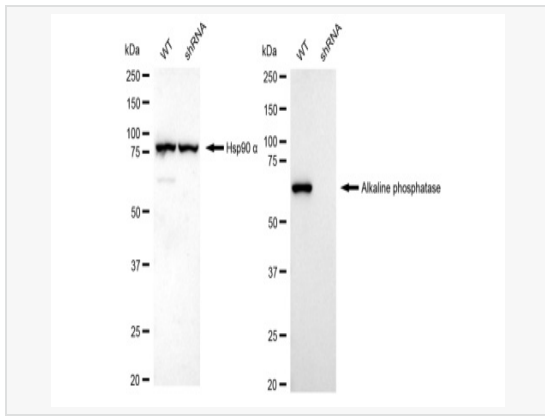
Flow cytometric analysis of Alkaline phosphatase expression in HepG2 cells using Alkaline phosphatase antibody (R021633, 1:2,000). Green, isotype control; red, Alkaline phosphatase.



Immunocytochemical staining of HepG2 cells with Alkaline phosphatase antibody (R021633, 1:1,000). Nuclei were stained blue with DAPI; Alkaline phosphatase was stained magenta with Alexa Fluor® 647. Images were taken using Leica stellaris 5. Protein abundance based on laser Intensity and smart gain: Medium. Scale bar: 20 μ m.



Western blotting analysis using Alkaline phosphatase antibody (R021633). Total cell lysates (30 μ g) from various cell lines were loaded and separated by SDS-PAGE. The blot was incubated with Alkaline phosphatase antibody (R021633, 1:5,000) and HRP-conjugated goat anti-rabbit secondary antibody (1:20,000) respectively. Image was developed using ECL Substrate Kit.



Western blotting analysis using Alkaline phosphatase antibody (R021633). Alkaline phosphatase expression in wild type (WT) and Alkaline phosphatase shRNA knockdown (KD) HeLa cells with 30 μ g of total cell lysates. Hsp90 α serves as a loading control. The blot was incubated with Alkaline phosphatase antibody (R021633, 1:5,000) and HRP-conjugated goat anti-rabbit secondary antibody (1:20,000) respectively. Image was developed using ECL Substrate Kit.