

[KD Validated] Anti-FSCN1 Rabbit mAb

Purified Recombinant Rabbit Monoclonal Antibody

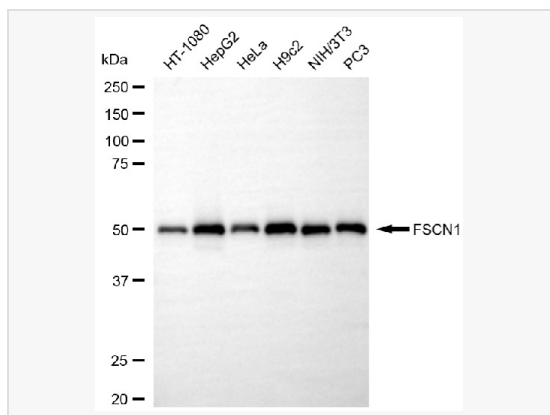
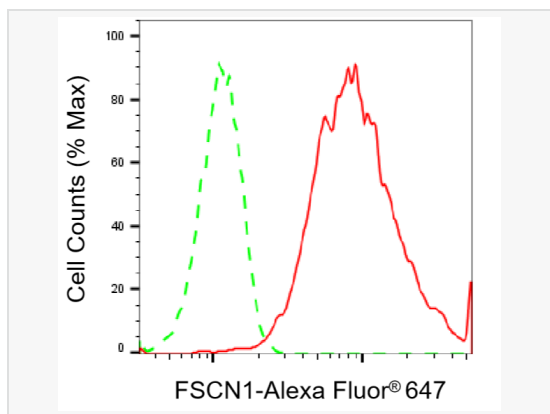
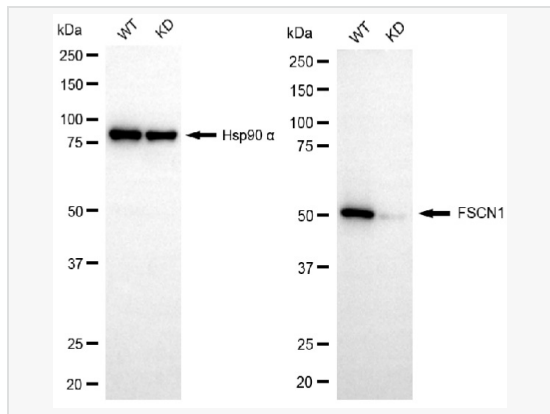
Catalog # R021623

Product Information

Application	WB, FC
Reactivity	Human, Mouse, Rat
Dilution	WB 1:2,000~1:10,000; FC 1:200~1:2,000
Host	Rabbit
Clonality	Monoclonal
Clone No.	68H13N69
Isotype	IgG
Label	Unconjugated
Immunogen	A synthesized peptide derived from human Fascin
Format	Affinity purified monoclonal antibody supplied in PBS with 0.02% sodium azide and 50% glycerol, pH 7.3.
Storage	Shipped on wet ice. Store at -20°C. Stable for 12 months from date of receipt. Aliquoting is unnecessary for -20°C storage.
Precautions	[KD Validated] Anti-FSCN1 Rabbit mAb [68H13N69] is for research use only and not for use in diagnostic or therapeutic procedures.

Protein Information

Synonyms	FSCN1; Fascin Actin-Bundling Protein 1; P55; SN; 55 kDa Actin-Bundling Protein; FLJ38511; Fascin; FAN1; HSN; Fascin Homolog 1, Actin-Bundling Protein (Strongylocentrotus Purpuratus); Singed (Drosophila)-Like (Sea Urchin Fascin Homolog Like); Epididymis Secretory Sperm Binding Protein; Fascin Homolog 1, Actin-Bundling Protein; Singed-Like (Fascin Homolog, Sea Urchin); Singed, Drosophila, Homolog-Like; Actin Bundling Protein; Singed-Like Protein.
Calculated MW	Calculated MW: 55 kDa; Observed MW: 54 kDa
Uniprot ID	Q16658
Gene ID	6624
Background	Promotes cross-linkage of parallel actin filaments during the formation of cell protrusions (lamellipodia and filopodia), and therefore plays an important role in regulating cell migration. It has been reported that fascin may also regulate filopodia formation by a mechanism independent of its actin-bundling functions, though less is known about this mechanism of action.



Western blotting analysis using FSCN1 antibody (R021623). FSCN1 expression in wild-type (WT) and FSCN1 knockdown (KD) HeLa cells with 20 µg of total cell lysates. Hsp90 α serves as a loading control. The blot was incubated with FSCN1 antibody (R021623, 1:5,000) and HRP-conjugated goat anti-rabbit secondary antibody (1:20,000) respectively. Image was developed using ECL Substrate Kit.

Flow cytometric analysis of FSCN1 expression in HepG2 cells using FSCN1 antibody (R021623, 1:2,000). Green, isotype control; red, FSCN1 .

Western blotting analysis using FSCN1 antibody (R021623). Total cell lysates (10 µg) from various cell lines were loaded and separated by SDS-PAGE. The blot was incubated with FSCN1 antibody (R021623, 1:10,000) and HRP-conjugated goat anti-rabbit secondary antibody (1:20,000) respectively. Image was developed using ECL Substrate Kit.