

[KD Validated] Anti-MUC1 Rabbit mAb

Purified Recombinant Rabbit Monoclonal Antibody

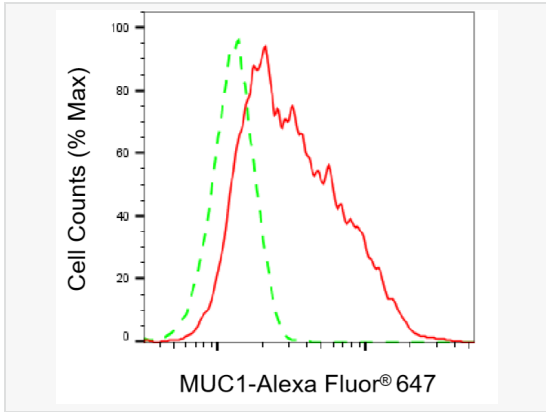
Catalog # R021608

Product Information

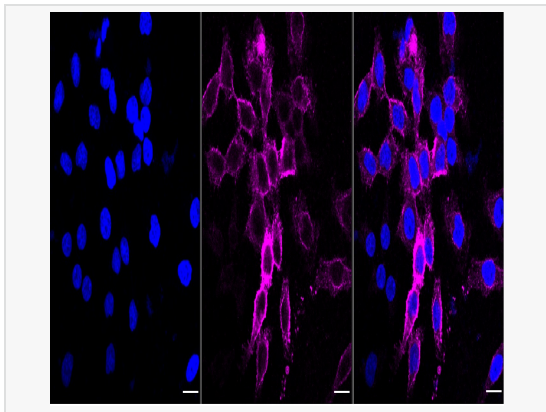
Application	WB, FC, IF (Cell)/ICC
Reactivity	Human
Dilution	WB 1:1,000~1:5,000; FC 1:200~1:2,000; IF 1:100~1:1,000
Host	Rabbit
Clonality	Monoclonal
Clone No.	87D54R49
Isotype	IgG
Label	Unconjugated
Immunogen	A synthesized peptide derived from human MUC1
Format	Affinity purified monoclonal antibody supplied in PBS with 0.02% sodium azide and 50% glycerol, pH 7.3.
Storage	Shipped on wet ice. Store at -20°C. Stable for 12 months from date of receipt. Aliquoting is unnecessary for -20°C storage.
Precautions	[KD Validated] Anti-MUC1 Rabbit mAb [87D54R49] is for research use only and not for use in diagnostic or therapeutic procedures.

Protein Information

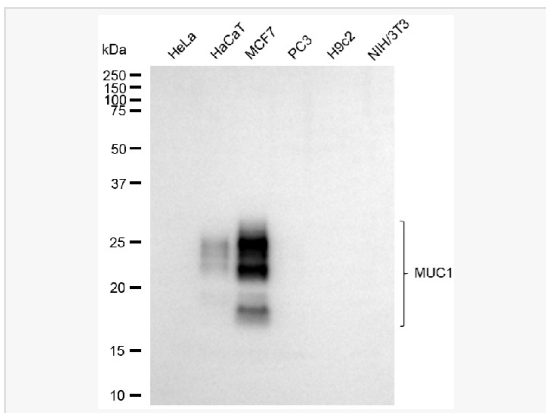
Synonyms	MUC1; Mucin 1, Cell Surface Associated; KL-6; PEM; EMA; ADMCKD1; ADMCKD; Ca15-3; CD227; MCKD; MCD; PUM; Tumor-Associated Epithelial Membrane Antigen; Breast Carcinoma-Associated Antigen DF3; Peanut-Reactive Urinary Mucin; Polymorphic Epithelial Mucin; Carcinoma-Associated Mucin; Mucin 1, Transmembrane; Krebs Von Den Lungen-6; Cancer Antigen 15-3; Episialin; CA 15-3; Mucin-1; H23AG; MCKD1; MUC-1; PEMT; Medullary Cystic Kidney Disease 1 (Autosomal Dominant); Tumor Associated Epithelial Mucin; Epithelial Membrane Antigen; Tumor-Associated Mucin; CD227 Antigen; H23 Antigen; MUC-1/SEC; MUC-1/X; MUC1/ZD; ADTKD2; MAM6.
Calculated MW	Calculated MW: 17 kDa; Observed MW: 17-27 kDa
Uniprot ID	P15941
Gene ID	4582
Background	This gene is a member of the mucin family and encodes a membrane bound, glycosylated phosphoprotein. This protein is anchored to the apical surface of many epithelia by a transmembrane domain, with the degree of glycosylation varying with cell type. The protein serves a protective function, binding to pathogens, as well as functioning in a cell signaling capacity.



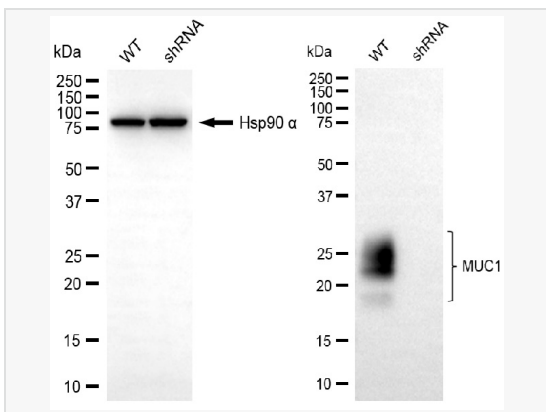
Flow cytometric analysis of MUC1 expression in HeLa cells using MUC1 antibody (R021608, 1:2,000). Green, isotype control; red, MUC1.



Immunocytochemical staining of HeLa cells with MUC1 antibody (R021608, 1:1,000). Nuclei were stained blue with DAPI; MUC1 was stained magenta with Alexa Fluor® 647. Images were taken using Leica stellaris 5. Protein abundance based on laser Intensity and smart gain: Medium. Scale bar, 20 μ m.



Western blotting analysis using MUC1 antibody (R021608). Total cell lysates (30 μ g) from various cell lines were loaded and separated by SDS-PAGE. The blot was incubated with MUC1 antibody (R021608, 1:5,000) and HRP-conjugated goat anti-rabbit secondary antibody (1:20,000) respectively. Image was developed using ECL Substrate Kit.



Western blotting analysis using MUC1 antibody (R021608). MUC1 expression in wild-type (WT) and MUC1 shRNA knockdown (KD) HeLa cells with 30 μ g of total cell lysates. Hsp90 α serves as a loading control. The blot was incubated with MUC1 antibody (R021608, 1:5,000) and HRP-conjugated goat anti-rabbit secondary antibody (1:20,000) respectively. Image was developed using ECL Substrate Kit.