

## [KD Validated] Anti-DIABLO Rabbit mAb

Purified Recombinant Rabbit Monoclonal Antibody

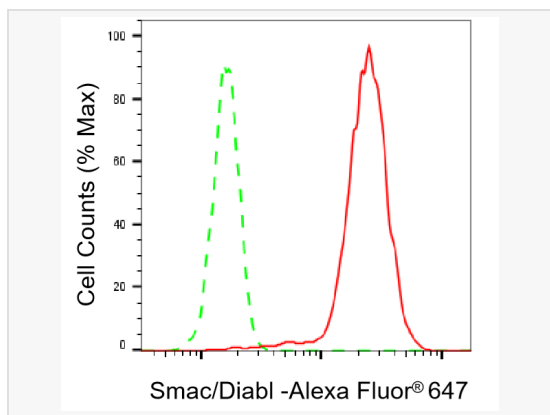
Catalog # R021605

### Product Information

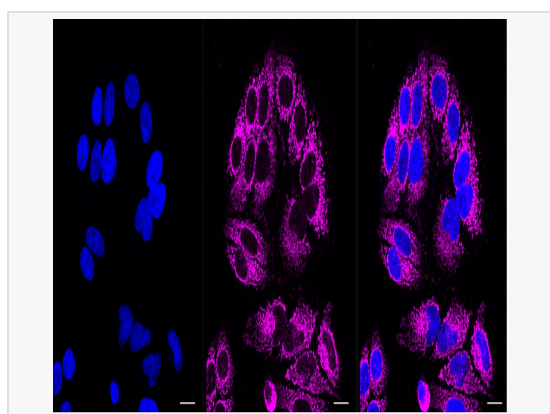
Application	WB, FC, IF (Cell)/ICC
Reactivity	Human, Mouse, Rat
Dilution	WB 1:1,000~1:5,000; FC 1:200~1:2,000; IF 1:100~1:1,000
Host	Rabbit
Clonality	Monoclonal
Clone No.	85S95Q45
Isotype	IgG
Label	Unconjugated
Immunogen	A synthesized peptide derived from human Smac/Diablo
Format	Affinity purified monoclonal antibody supplied in PBS with 0.02% sodium azide and 50% glycerol, pH 7.3.
Storage	Shipped on wet ice. Store at -20°C. Stable for 12 months from date of receipt. Aliquoting is unnecessary for -20°C storage.
Precautions	[KD Validated] Anti-DIABLO Rabbit mAb [85S95Q45] is for research use only and not for use in diagnostic or therapeutic procedures.

### Protein Information

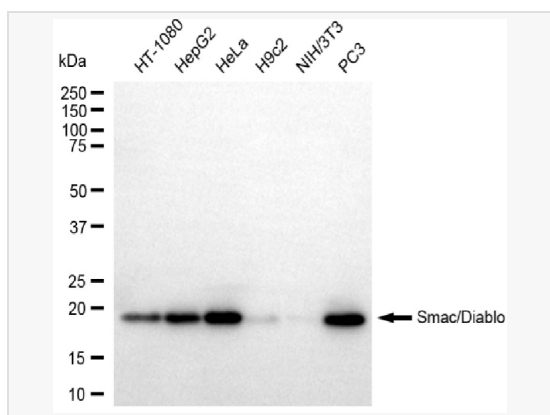
Synonyms	DIABLO; Diablo IAP-Binding Mitochondrial Protein; SMAC; Second Mitochondria-Derived Activator Of Caspase; DFNA64; Direct IAP-Binding Protein With Low PI; Diablo Homolog, Mitochondrial; DIABLO-S; FLJ25049; FLJ10537; Diablo, IAP-Binding Mitochondrial Protein; Diablo-Like Protein; Smac.
Calculated MW	Calculated MW: 27 kDa; Observed MW: 21 kDa
Uniprot ID	Q9NR28
Gene ID	56616
Background	Smac/Diablo is a 21 kDa mammalian mitochondrial protein that functions as a regulatory component during apoptosis. Upon mitochondrial stress, Smac/Diablo is released from mitochondria and competes with caspases for binding of IAPs (inhibitor of apoptosis proteins). The interaction of Smac/Diablo with IAPs relieves the inhibitory effect of the IAPs on caspases.



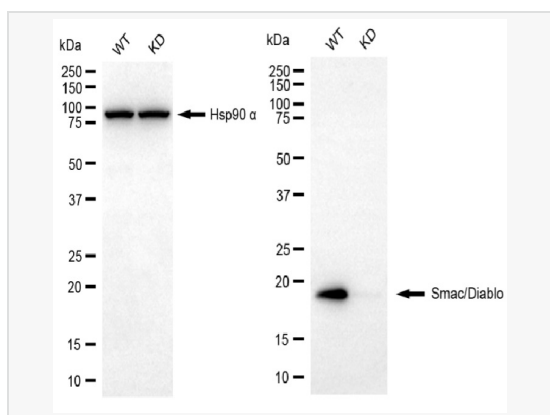
Flow cytometric analysis of Smac/Diabl expression in HepG2 cells using Smac/Diabl antibody (R021605, 1:2,000). Green, isotype control; red, Smac/Diabl.



Immunocytochemical staining of HepG2 cells with Smac/Diablo antibody (R021605, 1:1,000). Nuclei were stained blue with DAPI; Smac/Diablo was stained magenta with Alexa Fluor® 647. Images were taken using Leica stellaris 5. Protein abundance based on laser Intensity and smart gain: Medium. Scale bar, 20  $\mu$ m.



Western blotting analysis using Smac/Diablo antibody (R021605). Total cell lysates (30  $\mu$ g) from various cell lines were loaded and separated by SDS-PAGE. The blot was incubated with Smac/Diablo antibody (R021605, 1:5,000) and HRP-conjugated goat anti-rabbit secondary antibody (1:20,000) respectively. Image was developed using ECL Substrate Kit.



Western blotting analysis using Smac/Diablo antibody (R021605). Smac/Diablo expression in wild-type (WT) and DIABLO knockdown (KD) 293T cells with 20  $\mu$ g of total cell lysates. Hsp90  $\alpha$  serves as a loading control. The blot was incubated with Smac/Diablo antibody (R021605, 1:10,000) and HRP-conjugated goat anti-rabbit secondary antibody (1:20,000) respectively. Image was developed using ECL Substrate Kit.