

## [KD Validated] Anti-RPS6KB1 Rabbit mAb

Purified Recombinant Rabbit Monoclonal Antibody

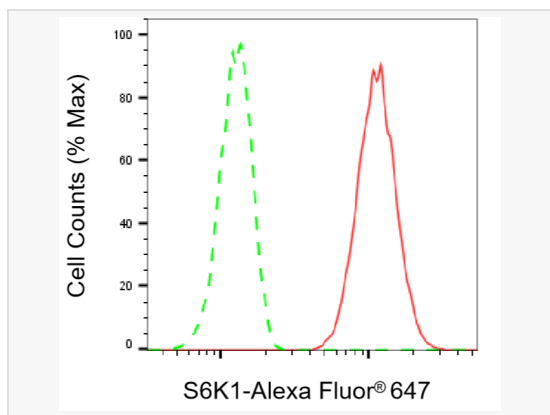
Catalog # R021590

### Product Information

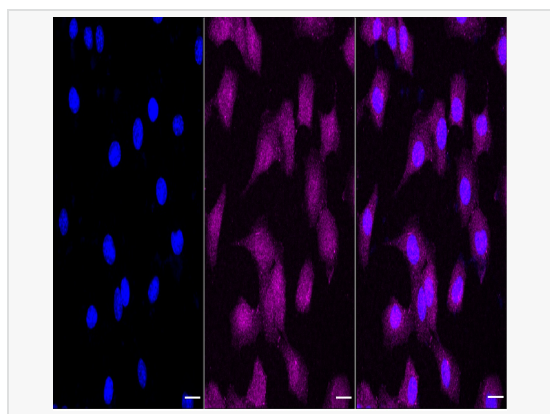
Application	WB, FC, IF (Cell)/ICC
Reactivity	Human, Mouse, Rat
Dilution	WB 1:1,000~1:5,000; FC 1:200~1:2,000; IF 1:100~1:1,000
Host	Rabbit
Clonality	Monoclonal
Clone No.	50H98F32
Isotype	IgG
Label	Unconjugated
Immunogen	A synthesized peptide derived from human S6K1
Format	Affinity purified monoclonal antibody supplied in PBS with 0.02% sodium azide and 50% glycerol, pH 7.3.
Storage	Shipped on wet ice. Store at -20°C. Stable for 12 months from date of receipt. Aliquoting is unnecessary for -20°C storage.
Precautions	[KD Validated] Anti-RPS6KB1 Rabbit mAb [50H98F32] is for research use only and not for use in diagnostic or therapeutic procedures.

### Protein Information

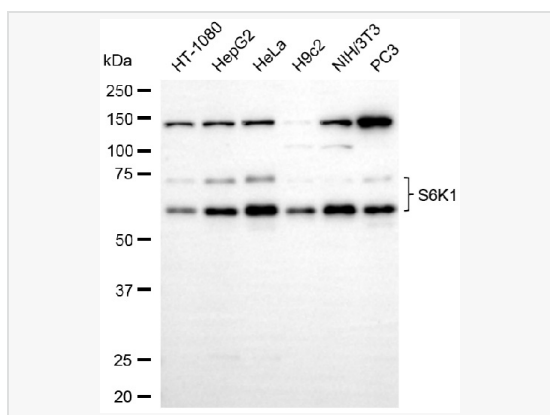
Synonyms	RPS6KB1; Ribosomal Protein S6 Kinase B1; S6K1; P70(S6K)-Alpha; STK14A; PS6K; S6K; Serine/Threonine-Protein Kinase 14A; Ribosomal Protein S6 Kinase Beta-1; Ribosomal Protein S6 Kinase I; EC 2.7.11.1; S6K-Beta-1; P70 S6KA; Ribosomal Protein S6 Kinase, 70kDa, Polypeptide 1; Ribosomal Protein S6 Kinase, 70kD, Polypeptide 1; 70 kDa Ribosomal Protein S6 Kinase 1; Serine/Threonine Kinase 14 Alpha; P70 Ribosomal S6 Kinase Alpha; P70 S6 Kinase Alpha; P70 S6K-Alpha; P70-Alpha; P70-S6K 1; EC 2.7.11; P70-S6K; P70S6K1.
Calculated MW	Calculated MW: 59 kDa; Observed MW: 60-75 kDa
Uniprot ID	P23443
Gene ID	6198
Background	This gene encodes a member of the RSK (ribosomal S6 kinase) family of serine/threonine kinases. This kinase contains 2 non-identical kinase catalytic domains and phosphorylates several residues of the S6 ribosomal protein.



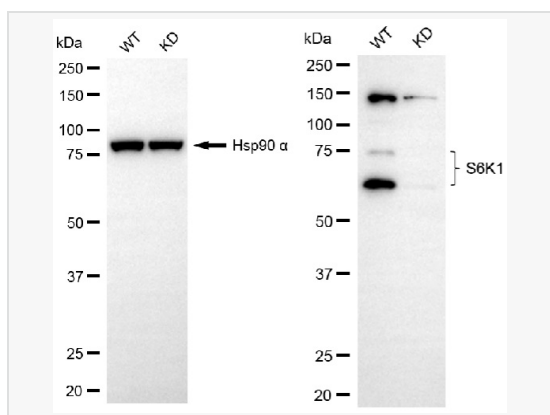
Flow cytometric analysis of S6K1 expression in C2C12 cells using S6K1 antibody (R021590, 1:2,000). Green, isotype control; red, S6K1.



Immunocytochemical staining of C2C12 cells with S6K1 antibody (R021590, 1:1,000). Nuclei were stained blue with DAPI; S6K1 was stained magenta with Alexa Fluor® 647. Images were taken using Leica stellaris 5. Protein abundance based on laser Intensity and smart gain: Medium. Scale bar, 20 µm.



Western blotting analysis using S6K1 antibody (R021590). Total cell lysates (20 µg) from various cell lines were loaded and separated by SDS-PAGE. The blot was incubated with S6K1 antibody (R021590, 1:5,000) and HRP-conjugated goat anti-rabbit secondary antibody (1:20,000) respectively. Image was developed using ECL Substrate Kit.



Western blotting analysis using S6K1 antibody (R021590). S6K1 expression in wild-type (WT) and RPS6KB1 knockdown (KD) HSHC cells with 20 µg of total cell lysates. Hsp90 α serves as a loading control. The blot was incubated with S6K1 antibody (R021590, 1:5,000) and HRP-conjugated goat anti-rabbit secondary antibody (1:20,000) respectively. Image was developed using ECL Substrate Kit.