

[KD Validated] Anti-MAPKAPK2 Rabbit mAb

Purified Recombinant Rabbit Monoclonal Antibody

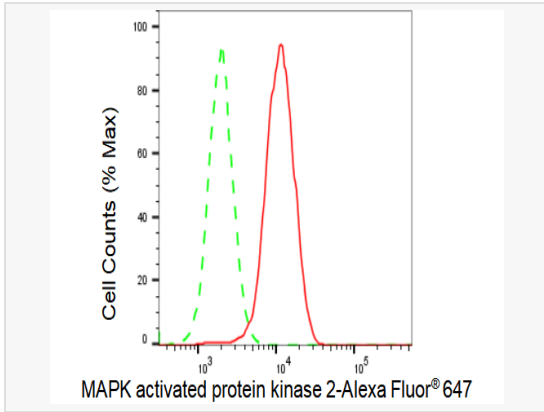
Catalog # R021581

Product Information

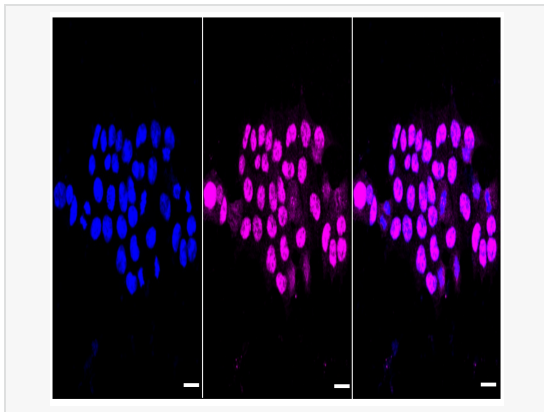
Application	WB, FC, IF (Cell)/ICC
Reactivity	Human
Dilution	WB 1:1,000~1:5,000; FC 1:200~1:2,000; IF 1:100~1:1,000
Host	Rabbit
Clonality	Monoclonal
Clone No.	88J48R72
Isotype	IgG
Label	Unconjugated
Immunogen	A synthesized peptide derived from human MAPKAP Kinase 2
Format	Affinity purified monoclonal antibody supplied in PBS with 0.02% sodium azide and 50% glycerol, pH 7.3.
Storage	Shipped on wet ice. Store at -20°C. Stable for 12 months from date of receipt. Aliquoting is unnecessary for -20°C storage.
Precautions	[KD Validated] Anti-MAPKAPK2 Rabbit mAb [88J48R72] is for research use only and not for use in diagnostic or therapeutic procedures.

Protein Information

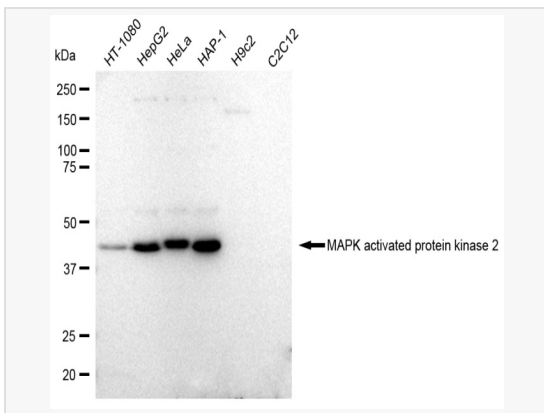
Synonyms	MAPKAPK2; MAPK Activated Protein Kinase 2; MK2; Mitogen-Activated Protein Kinase-Activated Protein Kinase 2; MAP Kinase-Activated Protein Kinase 2; MAPKAP Kinase 2; EC 2.7.11.1; MAPKAP-K2; MK-2; MAPK-Activated Protein Kinase 2; MAPKAPK-2; EC 2.7.11.
Calculated MW	Calculated MW: 46 kDa, Observed MW: 46 kDa
Uniprot ID	P49137
Gene ID	9261
Background	Its physiological substrate seems to be the small heat shock protein (HSP27/HSP25). In vitro can phosphorylate glycogen synthase at 'Ser-7' and tyrosine hydroxylase (on 'Ser-19' and 'Ser-40'). This kinase phosphorylates Ser in the peptide sequence, Hyd-X-R-X(2)-S, where Hyd is a large hydrophobic residue (By similarity).



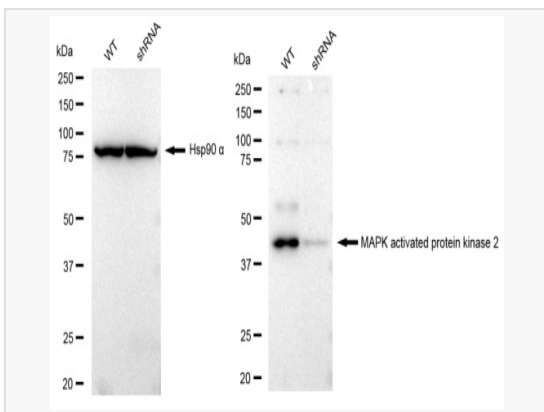
Flow cytometric analysis of MAPK activated protein kinase 2 expression in HAP-1 cells using MAPK activated protein kinase 2 antibody (R021581, 1:2,000). Green, isotype control; red, MAPK activated protein kinase 2.



Immunocytochemical staining of HAP-1 cells with MAPK activated protein kinase 2 antibody (R021581, 1:1,000). Nuclei were stained blue with DAPI; MAPK activated protein kinase 2 was stained magenta with Alexa Fluor® 647. Images were taken using Leica stellaris 5. Protein abundance based on laser Intensity and smart gain: Medium. Scale bar: 20 µm.



Western blotting analysis using MAPK activated protein kinase 2 antibody (R021581). Total cell lysates (30 µg) from various cell lines were loaded and separated by SDS-PAGE. The blot was incubated with MAPK activated protein kinase 2 antibody (R021581, 1:5,000) and HRP-conjugated goat anti-rabbit secondary antibody (1:20,000) respectively. Image was developed using ECL Substrate Kit.



Western blotting analysis using MAPK activated protein kinase 2 antibody (R021581). MAPK activated protein kinase 2 expression in wild type (WT) and MAPK activated protein kinase 2 shRNA knockdown (KD) HeLa cells with 30 µg of total cell lysates. Hsp90 α serves as a loading control. The blot was incubated with MAPK activated protein kinase 2 antibody (R021581, 1:5,000) and HRP-conjugated goat anti-rabbit secondary antibody (1:20,000) respectively. Image was developed using ECL Substrate Kit.