

[KD Validated] Anti-NEK7 Rabbit mAb

Purified Recombinant Rabbit Monoclonal Antibody

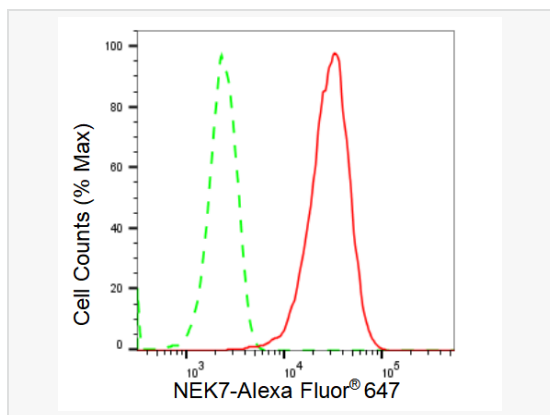
Catalog # R021574

Product Information

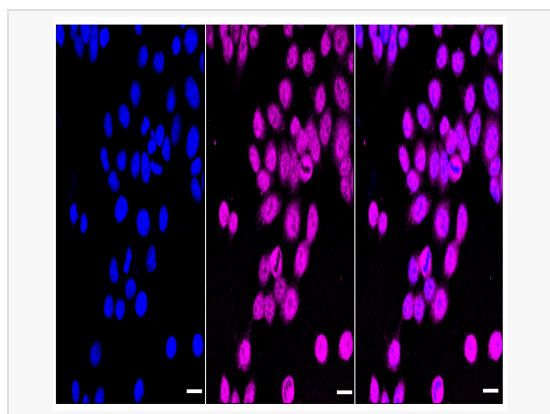
Application	WB, FC, IF (Cell)/ICC
Reactivity	Human, Mouse, Rat
Dilution	WB 1:1,000~1:5,000; FC 1:200~1:2,000; IF 1:100~1:1,000
Host	Rabbit
Clonality	Monoclonal
Clone No.	47E27T26
Isotype	IgG
Label	Unconjugated
Immunogen	A synthesized peptide derived from human NEK7
Format	Affinity purified monoclonal antibody supplied in PBS with 0.02% sodium azide and 50% glycerol, pH 7.3.
Storage	Shipped on wet ice. Store at -20°C. Stable for 12 months from date of receipt. Aliquoting is unnecessary for -20°C storage.
Precautions	[KD Validated] Anti-NEK7 Rabbit mAb [47E27T26] is for research use only and not for use in diagnostic or therapeutic procedures.

Protein Information

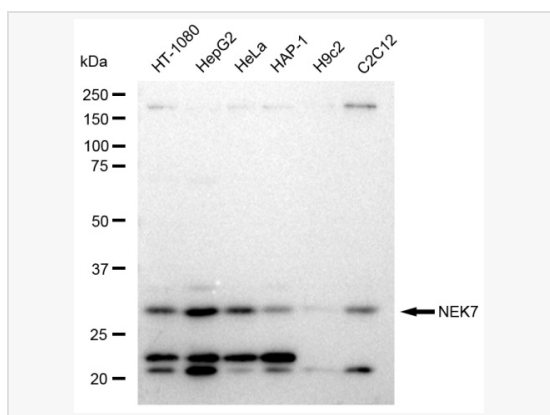
Synonyms	NIMA Related Kinase 7; NIMA (Never In Mitosis Gene A)-Related Kinase 7; Serine/Threonine-Protein Kinase Nek7; Never In Mitosis A-Related Kinase 7; NimA-Related Protein Kinase 7; EC 2.7.11.34; EC 2.7.11.1.
Calculated MW	Calculated MW: 35 kDa, Observed MW: 35 kDa
Uniprot ID	Q8TDX7
Gene ID	140609
Background	Protein kinase which plays an important role in mitotic cell cycle progression. Required for microtubule nucleation activity of the centrosome, robust mitotic spindle formation and cytokinesis. Phosphorylates RPS6KB1.
Cellular Location	Cytoplasm.
Tissue Location	Highly expressed in lung, muscle, testis, brain, heart, liver, leukocyte and spleen. Lower expression in ovary, prostate and kidney. No expression seen in small intestine.



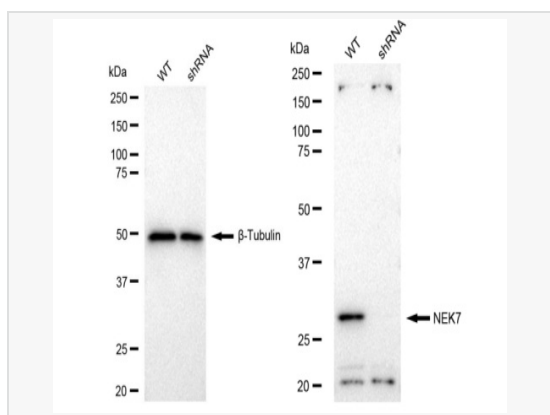
Flow cytometric analysis of NEK7 expression in HepG2 cells using NEK7 antibody (R021574, 1:2,000). Green, isotype control; red, NEK7.



Immunocytochemical staining of HepG2 cells with NEK7 antibody (R021574, 1:1,000). Nuclei were stained blue with DAPI; NEK7 was stained magenta with Alexa Fluor® 647. Images were taken using Leica stellaris 5. Protein abundance based on laser Intensity and smart gain: Medium. Scale bar: 20 µm.



Western blotting analysis using NEK7 antibody (R021574). Total cell lysates (30 µg) from various cell lines were loaded and separated by SDS-PAGE. The blot was incubated with NEK7 antibody (R021574, 1:5,000) and HRP-conjugated goat anti-rabbit secondary antibody (1:20,000) respectively. Image was developed using ECL Substrate Kit.



Western blotting analysis using NEK7 antibody (R021574). NEK7 expression in wild type (WT) and NEK7 shRNA knockdown (KD) HeLa cells with 30 µg of total cell lysates. β-Tubulin serves as a loading control. The blot was incubated with NEK7 antibody (R021574, 1:5,000) and HRP-conjugated goat anti-rabbit secondary antibody (1:20,000) respectively. Image was developed using ECL Substrate Kit.