

## [KD Validated] Anti-PAX6 Rabbit mAb

Purified Recombinant Rabbit Monoclonal Antibody

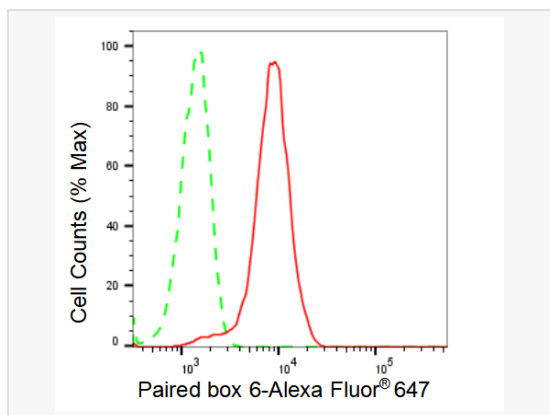
Catalog # R021572

### Product Information

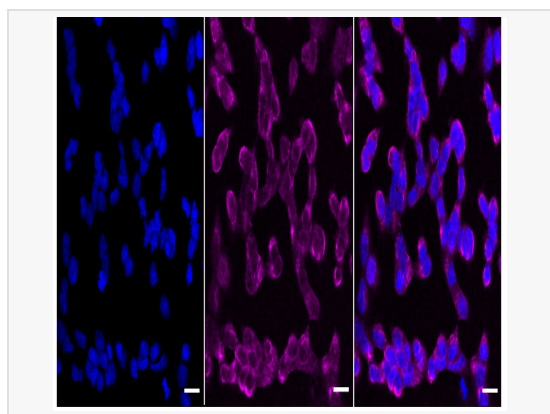
Application	WB, FC, IF (Cell)/ICC
Reactivity	Human
Dilution	WB 1:1,000~1:5,000; FC 1:200~1:2,000; IF 1:100~1:1,000
Host	Rabbit
Clonality	Monoclonal
Clone No.	54S94L66
Isotype	IgG
Label	Unconjugated
Immunogen	A synthesized peptide derived from human PAX6
Format	Affinity purified monoclonal antibody supplied in PBS with 0.02% sodium azide and 50% glycerol, pH 7.3.
Storage	Shipped on wet ice. Store at -20°C. Stable for 12 months from date of receipt. Aliquoting is unnecessary for -20°C storage.
Precautions	[KD Validated] Anti-PAX6 Rabbit mAb [54S94L66] is for research use only and not for use in diagnostic or therapeutic procedures.

### Protein Information

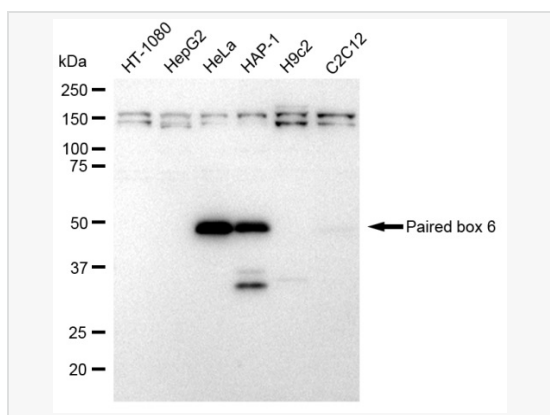
Synonyms	Paired Box 6; D11S812E; WAGR; AN2; AN; Paired Box Protein Pax-6; Aniridia Type II Protein; Oculorhombin; Aniridia 1; Aniridia 2; AN1; Paired Box Gene 6 (Aniridia, Keratitis); Paired Box 6 PAX6A-ASdel6-AS7 Isoform; Paired Box 6 PAX6A-ASdel6 Isoform; Paired Box 6 PAX6B-ASdel6 Isoform; Paired Box 6 PAX6A-Del6 Isoform; Paired Box 6 PAX6-12a Isoform; Paired Box 6 PAX6D Isoform; Paired Box Homeotic Gene-6; Alternative Protein PAX6; Aniridia, Keratitis; ASGD5; FVH1; MGDA;.
Calculated MW	Calculated MW: 55 kDa, Observed MW: 47 kDa
Uniprot ID	P26367
Gene ID	5080
Background	Transcription factor with important functions in the development of the eye, nose, central nervous system and pancreas. Required for the differentiation of pancreatic islet alpha cells (By similarity). Competes with PAX4 in binding to a common element in the glucagon, insulin and somatostatin promoters. Regulates specification of the ventral neuron subtypes by establishing the correct progenitor domains (By similarity).



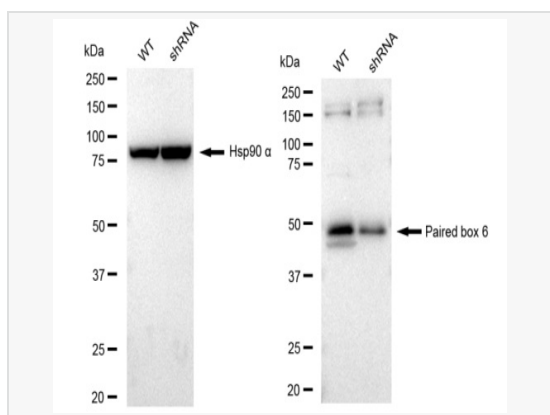
Flow cytometric analysis of Paired box 6 expression in HeLa cells using Paired box 6 antibody (R021572, 1:2,000). Green, isotype control; red, Paired box 6.



Immunocytochemical staining of HeLa cells with Paired box 6 antibody (R021572, 1:1,000). Nuclei were stained blue with DAPI; Paired box 6 was stained magenta with Alexa Fluor® 647. Images were taken using Leica stellaris 5. Protein abundance based on laser Intensity and smart gain: Medium. Scale bar: 20 µm.



Western blotting analysis using Paired box 6 antibody (R021572). Total cell lysates (30 µg) from various cell lines were loaded and separated by SDS-PAGE. The blot was incubated with Paired box 6 antibody (R021572, 1:5,000) and HRP-conjugated goat anti-rabbit secondary antibody (1:20,000) respectively. Image was developed using ECL Substrate Kit.



Western blotting analysis using Paired box 6 antibody (R021572). Paired box 6 expression in wild type (WT) and paired box 6 shRNA knockdown (KD) HeLa cells with 30 µg of total cell lysates. Hsp90 α serves as a loading control. The blot was incubated with Paired box 6 antibody (R021572, 1:5,000) and HRP-conjugated goat anti-rabbit secondary antibody (1:20,000) respectively. Image was developed using ECL Substrate Kit.