

[KD Validated] Anti-TEAD1 Rabbit mAb

Purified Recombinant Rabbit Monoclonal Antibody

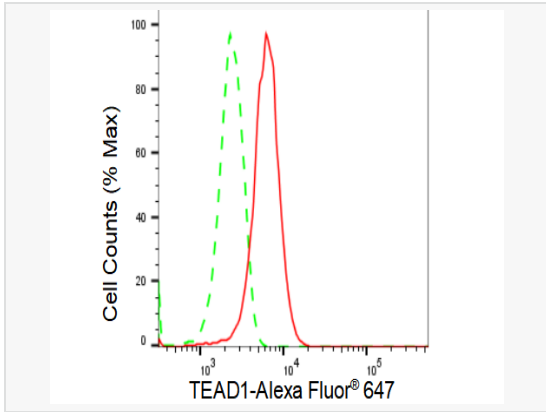
Catalog # R021547

Product Information

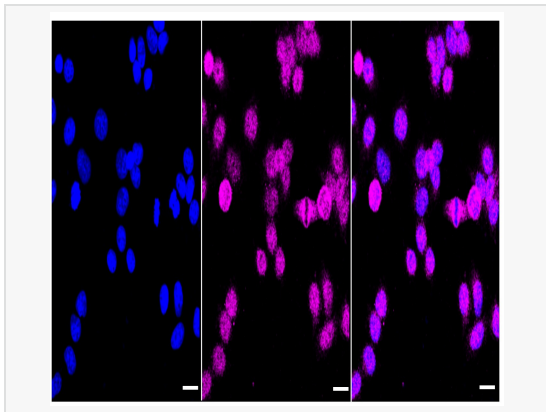
Application	WB, FC, IF (Cell)/ICC
Reactivity	Human, Mouse, Rat
Dilution	WB 1:1,000~1:5,000; FC 1:200~1:2,000; IF 1:100~1:1,000
Host	Rabbit
Clonality	Monoclonal
Clone No.	19Q78B07
Isotype	IgG
Label	Unconjugated
Immunogen	A synthesized peptide derived from human TEAD1
Format	Affinity purified monoclonal antibody supplied in PBS with 0.02% sodium azide and 50% glycerol, pH 7.3.
Storage	Shipped on wet ice. Store at -20°C. Stable for 12 months from date of receipt. Aliquoting is unnecessary for -20°C storage.
Precautions	[KD Validated] Anti-TEAD1 Rabbit mAb [19Q78B07] is for research use only and not for use in diagnostic or therapeutic procedures.

Protein Information

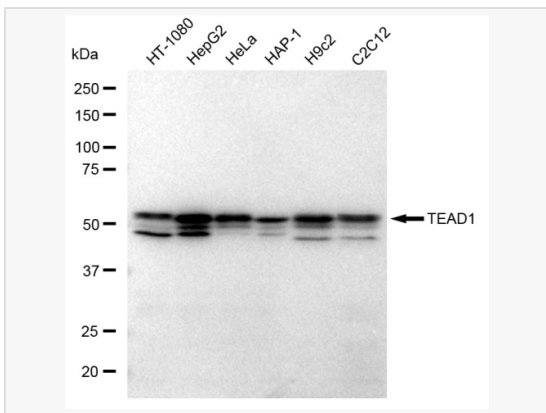
Synonyms	TEAD1; TEA Domain Transcription Factor 1; TEF-1; TCF13; TEA Domain Family Member 1 (SV40 Transcriptional Enhancer Factor); Transcriptional Enhancer Factor TEF-1; Transcriptional Enhancer Factor 1; Transcription Factor 13; Protein GT-IIC; NTEF-1; TCF-13; TEAD-1; AA; Atrophia Areata, Peripapillary Chorioretinal Degeneration; TEA Domain Family Member 1; REF1; TEF1.
Calculated MW	Calculated MW: 48 kDa, Observed MW: 52 kDa
Uniprot ID	P28347
Gene ID	7003
Background	This gene encodes a ubiquitous transcriptional enhancer factor that is a member of the TEA/ATTS domain family. This protein directs the transactivation of a wide variety of genes and, in placental cells, also acts as a transcriptional repressor. Mutations in this gene cause Sveinsson's chorioretinal atrophy. Additional transcript variants have been described but their full-length natures have not been experimentally verified. [provided by RefSeq, May 2010]
Cellular Location	Nucleus.
Tissue Location	Preferentially expressed in skeletal muscle. Lower levels in pancreas, placenta, and heart.



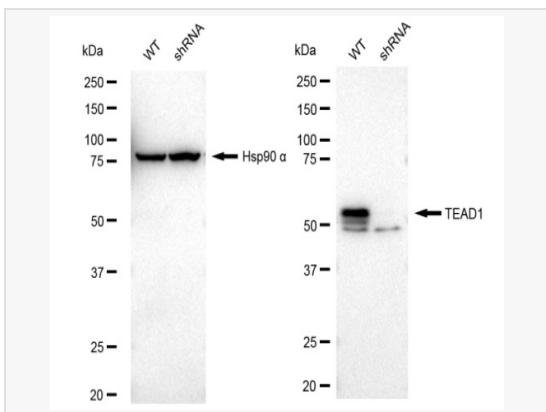
Flow cytometric analysis of TEAD1 expression in HepG2 cells using TEAD1 antibody (R021547, 1:2,000). Green, isotype control; red, TEAD1.



Immunocytochemical staining of HepG2 cells with TEAD1 antibody (R021547, 1:1,000). Nuclei were stained blue with DAPI; TEAD1 was stained magenta with Alexa Fluor® 647. Images were taken using Leica stellaris 5. Protein abundance based on laser Intensity and smart gain: Medium. Scale bar: 20 µm.



Western blotting analysis using TEAD1 antibody (R021547). Total cell lysates (30 µg) from various cell lines were loaded and separated by SDS-PAGE. The blot was incubated with TEAD1 antibody (R021547, 1:5,000) and HRP-conjugated goat anti-rabbit secondary antibody (1:20,000) respectively. Image was developed using ECL Substrate Kit.



Western blotting analysis using TEAD1 antibody (R021547). TEAD1 expression in wild type (WT) and TEAD1 shRNA knockdown (KD) HeLa cells with 30 µg of total cell lysates. Hsp90 α serves as a loading control. The blot was incubated with TEAD1 antibody (R021547, 1:5,000) and HRP-conjugated goat anti-rabbit secondary antibody (1:20,000) respectively. Image was developed using ECL Substrate Kit.