

[KD Validated] Anti-NFKB1 Rabbit mAb

Purified Recombinant Rabbit Monoclonal Antibody

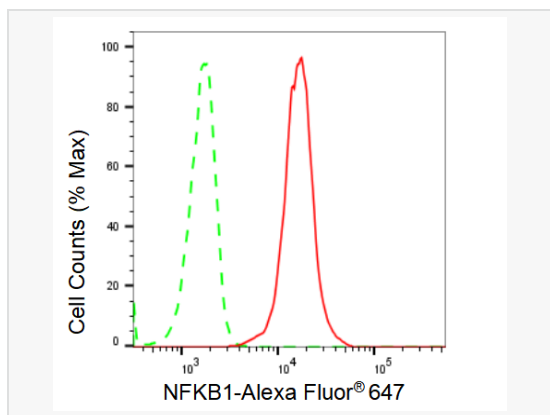
Catalog # R021543

Product Information

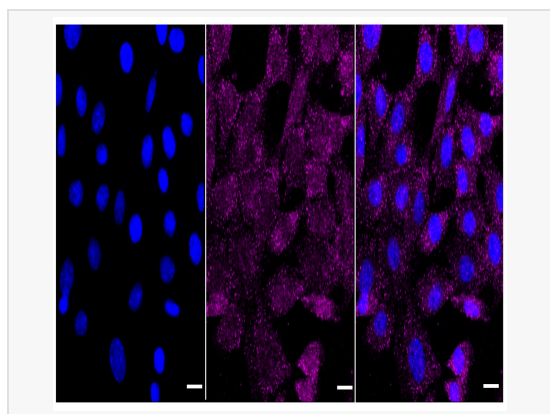
Application	WB, FC, IF (Cell)/ICC, IHC-P/IF (Tissue-P)
Reactivity	Human, Mouse, Rat
Dilution	WB 1:1,000~1:5,000; FC 1:200~1:2,000; IF 1:100~1:1,000; IHC-P 1:100~1:200
Host	Rabbit
Clonality	Monoclonal
Clone No.	22C06B19
Isotype	IgG
Label	Unconjugated
Immunogen	A synthesized peptide derived from human NF- κ B (p105/p50)
Format	Affinity purified monoclonal antibody supplied in PBS with 0.02% sodium azide and 50% glycerol, pH 7.3.
Storage	Shipped on wet ice. Store at -20°C. Stable for 12 months from date of receipt. Aliquoting is unnecessary for -20°C storage.
Precautions	[KD Validated] Anti-NFKB1 Rabbit mAb [22C06B19] is for research use only and not for use in diagnostic or therapeutic procedures.

Protein Information

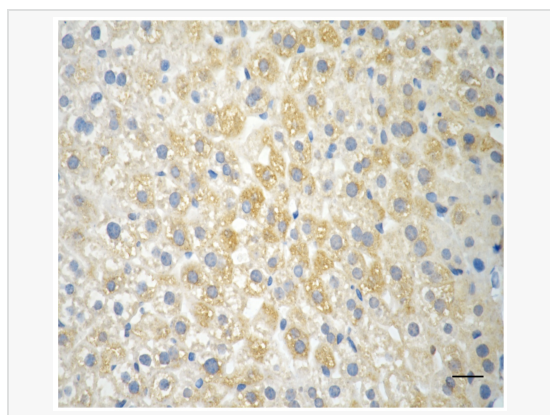
Synonyms	NFKB1; Nuclear Factor Kappa B Subunit 1; Nuclear Factor Of Kappa Light Polypeptide Gene Enhancer In B-Cells 1; Nuclear Factor NF-Kappa-B P105 Subunit; NFKB-P50; NF-KB1; KBF1; DNA-Binding Factor KBF1; NF-KappaB; NFkappaB; EBP-1; P105; P50; Nuclear Factor Kappa-B DNA Binding Subunit; Nuclear Factor NF-Kappa-B P50 Subunit; NF-Kappabeta; NF-Kappa-B1; NFKB-P105; NF-KAPPAB; NFKAPPAB; CVID12; NF-KB.
Calculated MW	Calculated MW: 105 kDa, Observed MW: 50,105 kDa
Uniprot ID	P19838
Gene ID	4790
Background	NFkB-p105 a transcription factor of the nuclear factor-kappaB (NFkB) group. Undergoes cotranslational processing by the 26S proteasome to produce a 50 kD protein. The 105 kD protein is a Rel protein-specific transcription inhibitor and the 50 kD protein is a DNA binding subunit of NFkB. NFkB is a transcription regulator that is activated by various intra- and extra-cellular stimuli such as cytokines, oxidant-free radicals, ultraviolet irradiation, and bacterial or viral products.



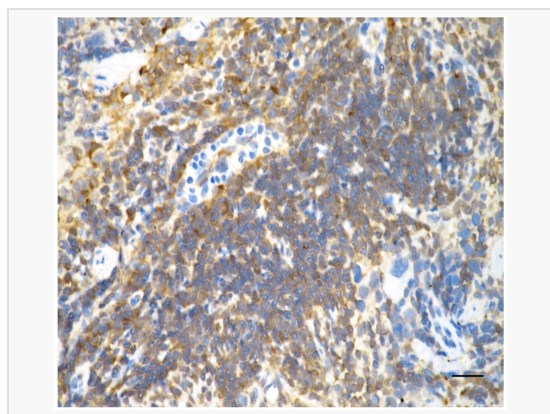
Flow cytometric analysis of NFKB1 expression in C2C12 cells using NFKB1 antibody (R021543, 1:2,000). Green, isotype control; red, NFKB1.



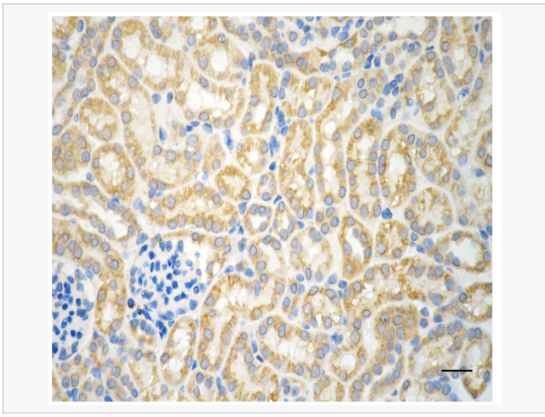
Immunocytochemical staining of C2C12 cells with NFKB1 antibody (R021543, 1:1,000). Nuclei were stained blue with DAPI; NFKB1 was stained magenta with Alexa Fluor® 647. Images were taken using Leica stellaris 5. Protein abundance based on laser Intensity and smart gain: Medium. Scale bar: 20 μm .



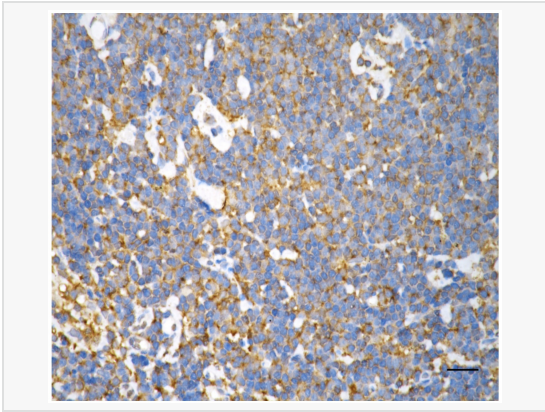
Immunohistochemistry was performed on paraffin-embedded mouse liver using NFKB1 antibody (R021543, 1:200). Antigen retrieval was done in sodium citrate buffer (pH 6.0). DAB was used for detection, with hematoxylin counterstaining. Images were acquired using a Nikon Ci-L Plus microscope (40 \times objective). Scale bar: 25 μm .



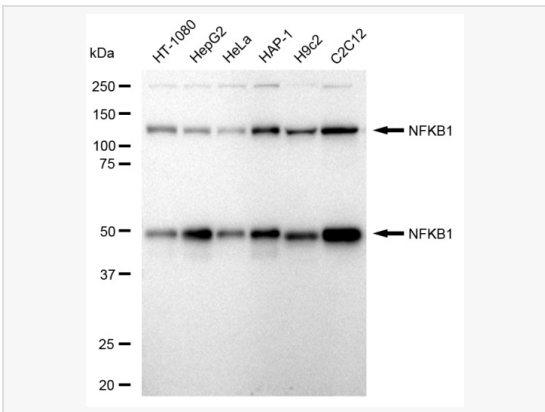
Immunohistochemistry was performed on paraffin-embedded mouse spleen using NFKB1 antibody (R021543, 1:200). Antigen retrieval was done in sodium citrate buffer (pH 6.0). DAB was used for detection, with hematoxylin counterstaining. Images were acquired using a Nikon Ci-L Plus microscope (40 \times objective). Scale bar: 25 μm .



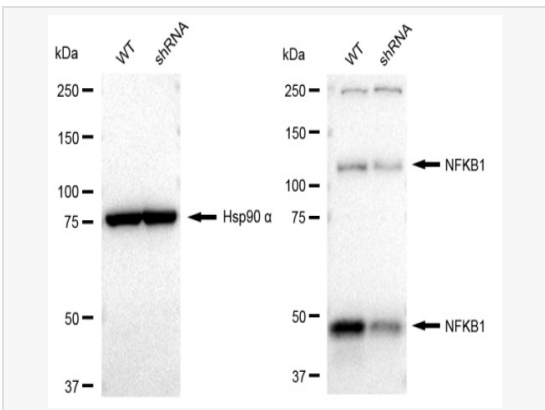
Immunohistochemistry was performed on paraffin-embedded mouse kidney using NFKB1 antibody (R021543, 1:200). Antigen retrieval was done in sodium citrate buffer (pH 6.0). DAB was used for detection, with hematoxylin counterstaining. Images were acquired using a Nikon Ci-L Plus microscope (40× objective). Scale bar: 25 μm.



Immunohistochemistry was performed on paraffin-embedded human lymphoma using NFKB1 antibody (R021543, 1:200). Antigen retrieval was done in sodium citrate buffer (pH 6.0). DAB was used for detection, with hematoxylin counterstaining. Images were acquired using a Nikon Ci-L Plus microscope (40× objective). Scale bar: 25 μm.



Western blotting analysis using NFKB1 antibody (R021543). Total cell lysates (30 μg) from various cell lines were loaded and separated by SDS-PAGE. The blot was incubated with NFKB1 antibody (R021543, 1:5,000) and HRP-conjugated goat anti-rabbit secondary antibody (1:20,000) respectively. Image was developed using ECL Substrate Kit.



Western blotting analysis using NFKB1 antibody (R021543). NFKB1 expression in wild type (WT) and NFKB1 shRNA knockdown (KD) HeLa cells with 30 μg of total cell lysates. Hsp90 α serves as a loading control. The blot was incubated with NFKB1 antibody (R021543, 1:5,000) and HRP-conjugated goat anti-rabbit secondary antibody (1:20,000) respectively. Image was developed using ECL Substrate Kit.