

[KD Validated] Anti-CBX5 Rabbit mAb

Purified Recombinant Rabbit Monoclonal Antibody

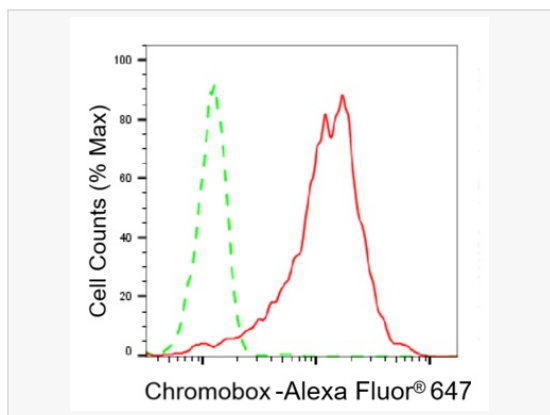
Catalog # R021509

Product Information

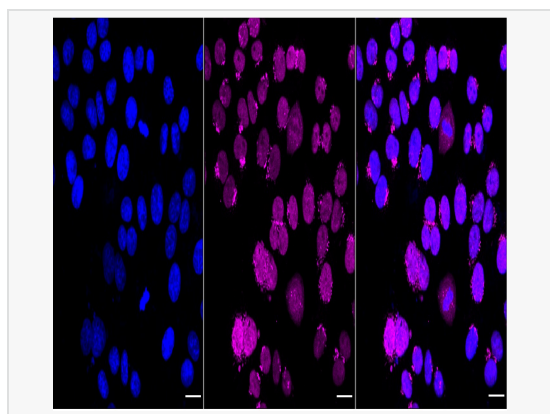
Application	WB, FC, IF (Cell)/ICC
Reactivity	Human, Mouse, Rat
Dilution	WB 1:1,000~1:5,000; FC 1:200~1:2,000; IF 1:100~1:1,000
Host	Rabbit
Clonality	Monoclonal
Clone No.	64L26J10
Isotype	IgG
Label	Unconjugated
Immunogen	A synthesized peptide derived from human HP1 alpha
Format	Affinity purified monoclonal antibody supplied in PBS with 0.02% sodium azide and 50% glycerol, pH 7.3.
Storage	Shipped on wet ice. Store at -20°C. Stable for 12 months from date of receipt. Aliquoting is unnecessary for -20°C storage.
Precautions	[KD Validated] Anti-CBX5 Rabbit mAb [64L26J10] is for research use only and not for use in diagnostic or therapeutic procedures.

Protein Information

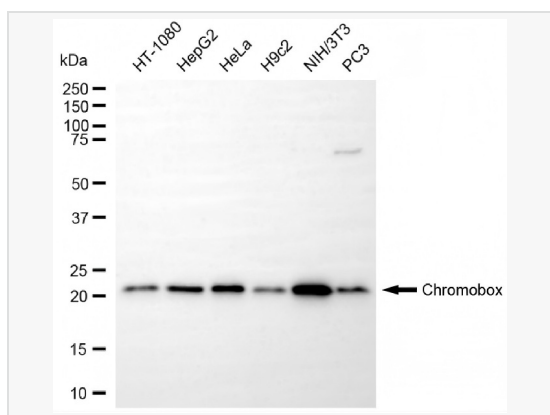
Synonyms	CBX5; Chromobox ; HP1-ALPHA; HP1; Chromobox Homolog 5 (HP1 Alpha Homolog, Drosophila); Heterochromatin Protein 1 Homolog Alpha; Chromobox Protein Homolog 5; HP1Hs-Alpha; Antigen P25; HP1alpha; HP1A; Chromobox Homolog 5 (Drosophila HP1 Alpha); Heterochromatin Protein 1-Alpha; HP1 Alpha Homolog (Drosophila); Epididymis Luminal Protein 25; Chromobox Homolog 5; HP1 Alpha Homolog; HP1Hs Alpha; HP1 Alpha; HEL25.
Calculated MW	Calculated MW: 22 kDa, Observed MW: 22 kDa
Uniprot ID	P45973
Gene ID	23468
Background	Component of heterochromatin that recognizes and binds histone H3 tails methylated at 'Lys-9' (H3K9me), leading to epigenetic repression. In contrast, it is excluded from chromatin when 'Tyr-41' of histone H3 is phosphorylated (H3Y41ph). Can interact with lamin-B receptor (LBR). This interaction can contribute to the association of the heterochromatin with the inner nuclear membrane. Involved in the formation of functional kinetochore through interaction with MIS12 complex proteins.



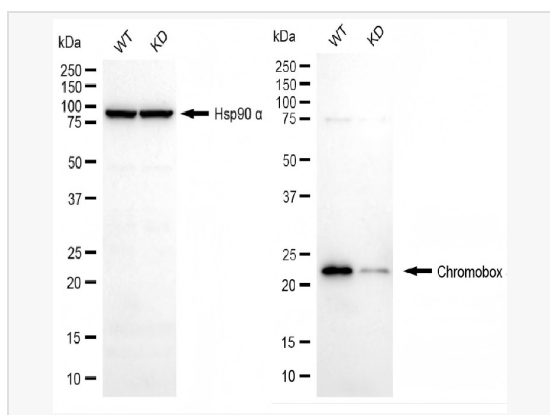
Flow cytometric analysis of Chromobox 5 expression in HepG2 cells using Chromobox 5 antibody (R021509, 1:2,000). Green, isotype control; red, Chromobox 5.



Immunocytochemical staining of HepG2 cells with Chromobox 5 antibody (R021509, 1:1,000). Nuclei were stained blue with DAPI; Chromobox 5 was stained magenta with Alexa Fluor® 647. Images were taken using Leica stellaris 5. Protein abundance based on laser Intensity and smart gain: High. Scale bar, 20 µm.



Western blotting analysis using chromobox 5 antibody (R021509). Total cell lysates (30 µg) from various cell lines were loaded and separated by SDS-PAGE. The blot was incubated with chromobox 5 antibody (R021509, 1:5,000) and HRP-conjugated goat anti-rabbit secondary antibody (1:20,000) respectively. Image was developed using ECL Substrate Kit.



Western blotting analysis using chromobox 5 antibody (R021509). Chromobox 5 expression in wild-type (WT) and chromobox 5 (CBX5) knockdown (KD) HeLa cells with 20 µg of total cell lysates. Hsp90 α serves as a loading control. The blot was incubated with chromobox 5 antibody (R021509, 1:5,000) and HRP-conjugated goat anti-rabbit secondary antibody (1:20,000) respectively. Image was developed using ECL Substrate Kit.