

[KD Validated] Anti-CHEK1 Rabbit mAb

Purified Recombinant Rabbit Monoclonal Antibody

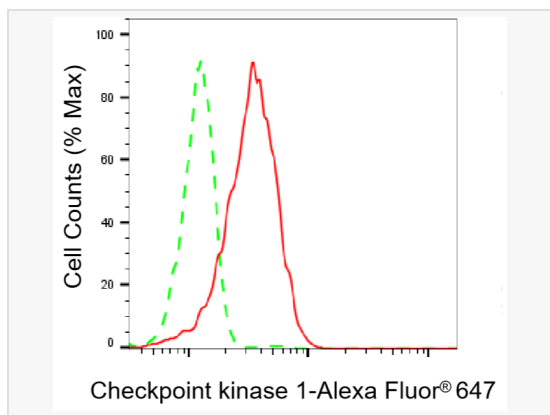
Catalog # R021500

Product Information

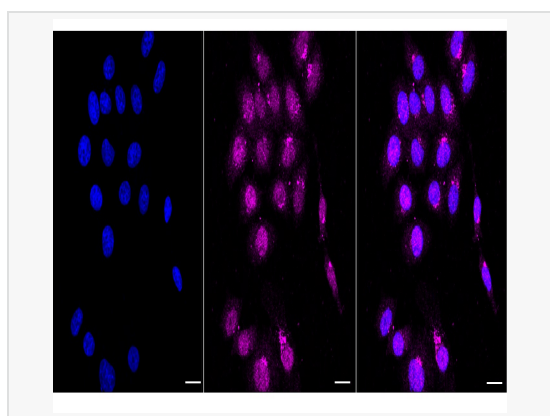
Application	WB, FC, IF (Cell)/ICC
Reactivity	Human
Dilution	WB 1:1,000~1:5,000; FC 1:200~1:2,000; IF 1:100~1:1,000
Host	Rabbit
Clonality	Monoclonal
Clone No.	48O30P85
Isotype	IgG
Label	Unconjugated
Immunogen	A synthesized peptide derived from human Chk1
Format	Affinity purified monoclonal antibody supplied in PBS with 0.02% sodium azide and 50% glycerol, pH 7.3.
Storage	Shipped on wet ice. Store at -20°C. Stable for 12 months from date of receipt. Aliquoting is unnecessary for -20°C storage.
Precautions	[KD Validated] Anti-CHEK1 Rabbit mAb [48O30P85] is for research use only and not for use in diagnostic or therapeutic procedures.

Protein Information

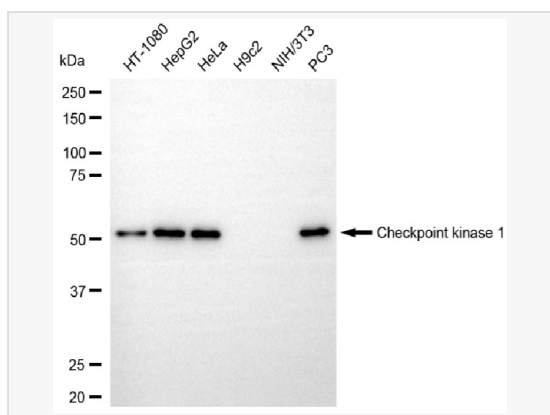
Synonyms	CHEK1; Checkpoint Kinase 1; CHK1; Serine/Threonine-Protein Kinase Chk1; Cell Cycle Checkpoint Kinase; CHK1 Checkpoint Homolog; EC 2.7.11.1; Checkpoint, S. Pombe, Homolog Of, 1; CHK1 (Checkpoint, S.Pombe) Homolog; CHK1 Checkpoint Homolog (S. Pombe); Checkpoint Kinase-1 4; EC 2.7.11; OZEMA21; Chk1-S.
Calculated MW	Calculated MW: 54 kDa, Observed MW: 54 kDa
Uniprot ID	O14757
Gene ID	1111
Background	DNA damage induced protein phosphorylation; regulation of mitotic centrosome separation; regulation of S phase; peptidyl-threonine phosphorylation; DNA repair; chromatin-mediated maintenance of transcription; negative regulation of mitosis;



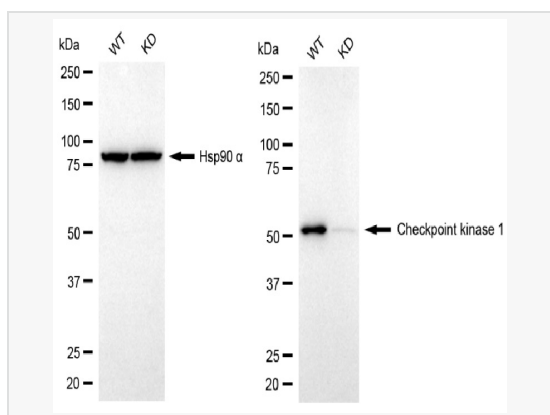
Flow cytometric analysis of Checkpoint kinase 1 expression in HepG2 cells using Checkpoint kinase 1 antibody (R021500, 1:2,000). Green, isotype control; red, Checkpoint kinase 1.



Immunocytochemical staining of HepG2 cells with Checkpoint kinase 1 antibody (R021500, 1:1,000). Nuclei were stained blue with DAPI; Checkpoint kinase 1 was stained magenta with Alexa Fluor® 647. Images were taken using Leica stellaris 5. Protein abundance based on laser Intensity and smart gain: Medium. Scale bar, 20 µm.



Western blotting analysis using checkpoint kinase 1 antibody (R021500). Total cell lysates (30 µg) from various cell lines were loaded and separated by SDS-PAGE. The blot was incubated with checkpoint kinase 1 antibody (R021500, 1:5,000) and HRP-conjugated goat anti-rabbit secondary antibody (1:20,000) respectively. Image was developed using ECL Substrate Kit.



Western blotting analysis using checkpoint kinase 1 antibody (R021500). Checkpoint kinase 1 expression in wild-type (WT) and checkpoint kinase 1 (CHEK1) knockdown (KD) HeLa cells with 20 µg of total cell lysates. Hsp90 α serves as a loading control. The blot was incubated with checkpoint kinase 1 antibody (R021500, 1:5,000) and HRP-conjugated goat anti-rabbit secondary antibody (1:20,000) respectively. Image was developed using ECL Substrate Kit.