

[KD Validated] Anti-ILK Rabbit mAb

Purified Recombinant Rabbit Monoclonal Antibody

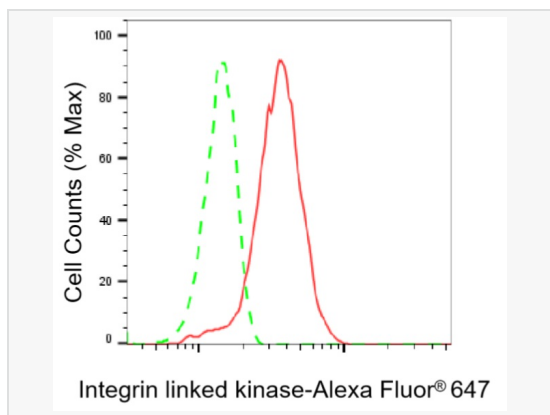
Catalog # R021495

Product Information

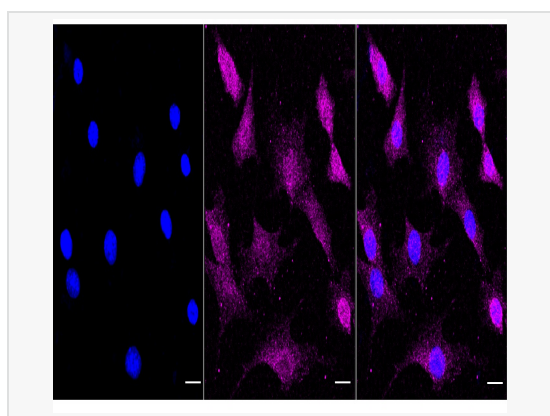
Application	WB, FC, IF (Cell)/ICC
Reactivity	Human, Mouse, Rat
Dilution	WB 1:1,000~1:5,000; FC 1:200~1:2,000; IF 1:100~1:1,000
Host	Rabbit
Clonality	Monoclonal
Clone No.	29B66G58
Isotype	IgG
Label	Unconjugated
Immunogen	A synthesized peptide derived from human ILK
Format	Affinity purified monoclonal antibody supplied in PBS with 0.02% sodium azide and 50% glycerol, pH 7.3.
Storage	Shipped on wet ice. Store at -20°C. Stable for 12 months from date of receipt. Aliquoting is unnecessary for -20°C storage.
Precautions	[KD Validated] Anti-ILK Rabbit mAb [29B66G58] is for research use only and not for use in diagnostic or therapeutic procedures.

Protein Information

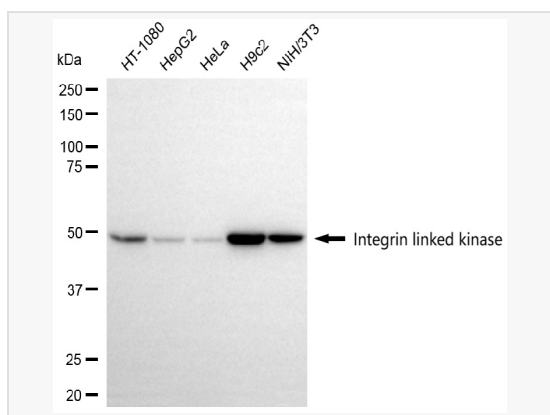
Synonyms	ILK; Integrin Linked Kinase; 59 KDa Serine/Threonine-Protein Kinase; Integrin-Linked Protein Kinase; Beta-Integrin-Linked Kinase; P59ILK; ILK-1; ILK-2; Epididymis Secretory Protein Li 28; Integrin-Linked Kinase-2; Integrin-Linked Kinase; EC 2.7.11.1; HEL-S-28; ILK1; ILK2; P59.
Calculated MW	Calculated MW: 51 kDa, Observed MW: 48 kDa
Uniprot ID	Q13418
Gene ID	3611
Background	Integrin-linked kinases (ILKs) couple integrins and growth factors to downstream pathways involved in cell survival, cell cycle control, cell-cell adhesion and cell motility. ILK functions as a scaffold bridging the extracellular matrix (ECM) and growth factor receptors to the actin cytoskeleton through interactions with integrin, PINCH (which links ILK to the RTKs via Nck2), CH-ILKBP and affixin.



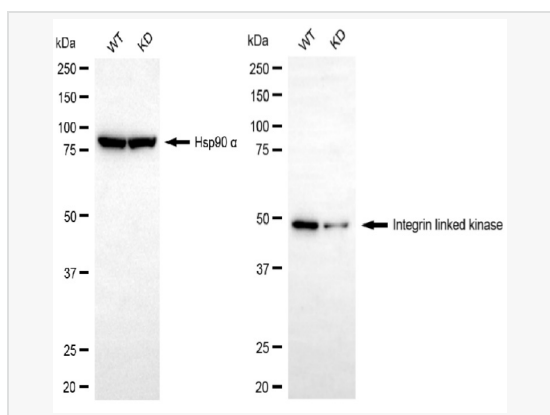
Flow cytometric analysis of Integrin linked kinase expression in C2C12 cells using Integrin linked kinase antibody (R021495, 1:2,000). Green, isotype control; red, Integrin linked kinase.



Immunocytochemical staining of C2C12 cells with Integrin linked kinase antibody (R021495, 1:1,000). Nuclei were stained blue with DAPI; Integrin linked kinase was stained magenta with Alexa Fluor® 647. Images were taken using Leica stellaris 5. Protein abundance based on laser Intensity and smart gain: Low. Scale bar, 20 μ m.



Western blotting analysis using integrin linked kinase antibody (R021495). Total cell lysates (30 μ g) from various cell lines were loaded and separated by SDS-PAGE. The blot was incubated with integrin linked kinase antibody (R021495, 1:5,000) and HRP-conjugated goat anti-rabbit secondary antibody (1:20,000) respectively. Image was developed using ECL Substrate Kit.



Western blotting analysis using integrin linked kinase antibody (R021495). Integrin linked kinase expression in wild-type (WT) and integrin linked kinase (DAG1) knockdown (KD) HeLa cells with 20 μ g of total cell lysates. Hsp90 α serves as a loading control. The blot was incubated with integrin linked kinase antibody (R021495, 1:5,000) and HRP-conjugated goat anti-rabbit secondary antibody (1:20,000) respectively. Image was developed using ECL Substrate Kit.