

## [KD Validated] Anti-NEDD4L Rabbit mAb

Purified Recombinant Rabbit Monoclonal Antibody

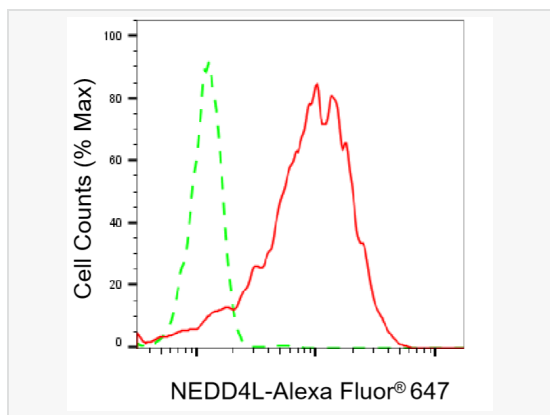
Catalog # R021490

### Product Information

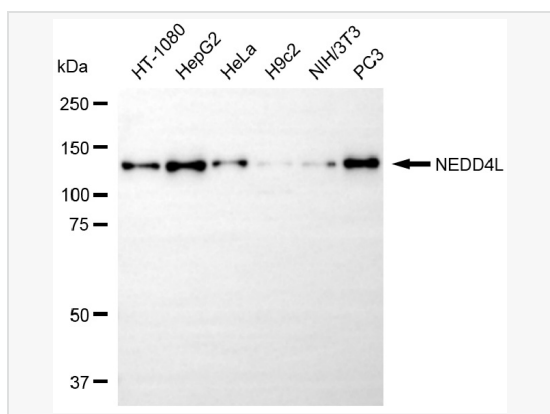
Application	WB, FC
Reactivity	Human, Mouse, Rat
Dilution	WB 1:4,000~1:20,000; FC 1:200~1:2,000
Host	Rabbit
Clonality	Monoclonal
Clone No.	81E53Q95
Isotype	IgG
Label	Unconjugated
Immunogen	A synthesized peptide derived from human NEDD4-2
Format	Affinity purified monoclonal antibody supplied in PBS with 0.02% sodium azide and 50% glycerol, pH 7.3.
Storage	Shipped on wet ice. Store at -20°C. Stable for 12 months from date of receipt. Aliquoting is unnecessary for -20°C storage.
Precautions	[KD Validated] Anti-NEDD4L Rabbit mAb [81E53Q95] is for research use only and not for use in diagnostic or therapeutic procedures.

### Protein Information

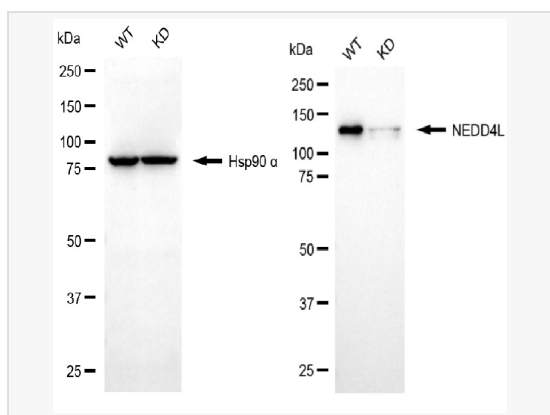
Synonyms	NEDD4L; NEDD4 Like E3 Ubiquitin Protein Ligase; KIAA0439; NEDD4-2; RSP5; Neural Precursor Cell Expressed, Developmentally Down-Regulated 4-Like, E3 Ubiquitin Protein Ligase; HECT-Type E3 Ubiquitin Transferase NED4L; E3 Ubiquitin-Protein Ligase NEDD4-Like; NEDD4.2; Neural Precursor Cell Expressed, Developmentally Down-Regulated 4-Like; Ubiquitin-Protein Ligase Rsp5; EC 2.3.2.26; EC 2.3.2.36; HNEDD4-2; EC 6.3.2; Nedd4-2; PVNH7; NEDL3.
Calculated MW	Calculated MW: 112 kDa, Observed MW: 130 kDa
Uniprot ID	Q96PU5
Gene ID	23327
Background	This gene encodes a member of the Nedd4 family of HECT domain E3 ubiquitin ligases. HECT domain E3 ubiquitin ligases transfer ubiquitin from E2 ubiquitin-conjugating enzymes to protein substrates, thus targeting specific proteins for lysosomal degradation. The encoded protein mediates the ubiquitination of multiple target substrates and plays a critical role in epithelial sodium transport by regulating the cell surface expression of the epithelial sodium channel, ENaC. Single nucleotide polymorphisms in this gene may be associated with essential hypertension. Alternatively spliced transcript variants encoding multiple isoforms have been observed for this gene. [provided by RefSeq, Mar 2012].
Cellular Location	Cytoplasm. May be recruited to exosomes by NDFIP1.
Tissue Location	Ubiquitously expressed, with highest levels in prostate, pancreas and kidney.



Flow cytometric analysis of NEDD4L expression in HepG2 cells using NEDD4L antibody (R021490, 1:2,000). Green, isotype control; red, NEDD4L.



Western blotting analysis using NEDD4L antibody (R021490). Total cell lysates (30  $\mu$ g) from various cell lines were loaded and separated by SDS-PAGE. The blot was incubated with NEDD4L antibody (R021490, 1:20,000) and HRP-conjugated goat anti rabbit secondary antibody (1:20,000) respectively. Image was developed using ECL Substrate Kit.



Western blotting analysis using NEDD4L antibody (R021490). NEDD4L expression in wild-type (WT) and NEDD4L knockdown (KD) 293T cells with 20  $\mu$ g of total cell lysates. Hsp90  $\alpha$  serves as a loading control. The blot was incubated with NEDD4L antibody (R021490, 1:20,000) and HRP-conjugated goat anti-rabbit secondary antibody (1:20,000) respectively. Image was developed using ECL Substrate Kit.