

[KD Validated] Anti-MAD1L1 Rabbit mAb

Purified Recombinant Rabbit Monoclonal Antibody

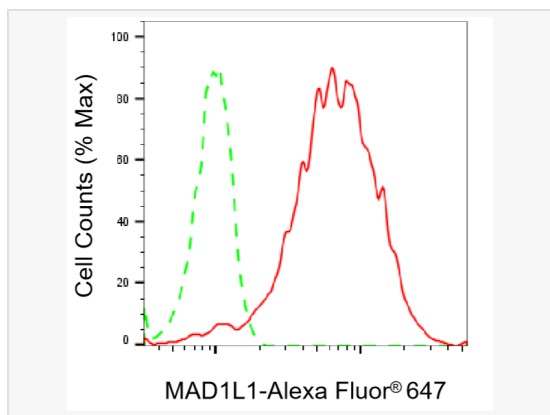
Catalog # R021450

Product Information

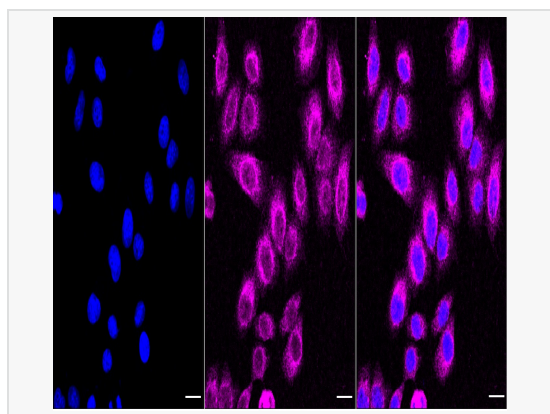
Application	WB, FC, IF (Cell)/ICC
Reactivity	Human, Mouse, Rat
Dilution	WB 1:1,000~1:5,000; FC 1:200~1:2,000; IF 1:100~1:1,000
Host	Rabbit
Clonality	Monoclonal
Clone No.	48R62B54
Isotype	IgG
Label	Unconjugated
Immunogen	A synthesized peptide derived from human MAD1
Format	Affinity purified monoclonal antibody supplied in PBS with 0.02% sodium azide and 50% glycerol, pH 7.3.
Storage	Shipped on wet ice. Store at -20°C. Stable for 12 months from date of receipt. Aliquoting is unnecessary for -20°C storage.
Precautions	[KD Validated] Anti-MAD1L1 Rabbit mAb [48R62B54] is for research use only and not for use in diagnostic or therapeutic procedures.

Protein Information

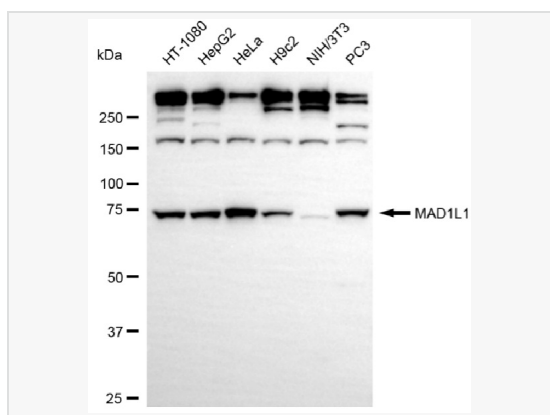
Synonyms	MAD1L1; Mitotic Arrest Deficient 1 Like 1; TXBP181; MAD1; HsMAD1; TP53I9; PIG9; Mitotic Spindle Assembly Checkpoint Protein MAD1; Mitotic Arrest Deficient 1-Like Protein 1; Mitotic Checkpoint MAD1 Protein Homolog; MAD1 Mitotic Arrest Deficient Like 1; Tax-Binding Protein 181; MAD1-Like Protein 1; MAD1 (Mitotic Arrest Deficient, Yeast, Homolog)-Like 1; Mitotic-Arrest Deficient 1, Yeast, Homolog-Like 1; MAD1 Mitotic Arrest Deficient-Like 1 (Yeast); Tumor Protein P53 Inducible Protein 9; HMAD1; MVA7.
Calculated MW	Calculated MW: 83 kDa, Observed MW: 75 kDa
Uniprot ID	Q9Y6D9
Gene ID	8379



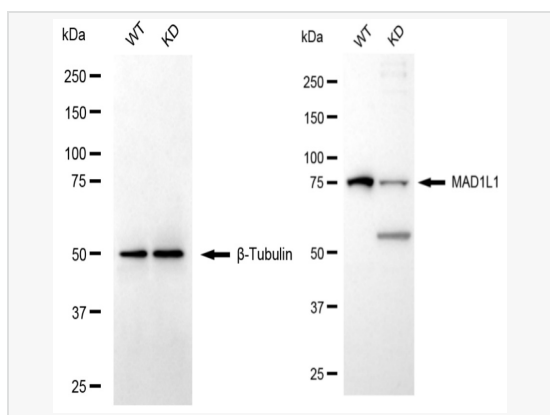
Flow cytometric analysis of MAD1L1 expression in HepG2 cells using MAD1L1 antibody (R021450, 1:2,000). Green, isotype control; red, MAD1L1.



Immunocytochemical staining of HepG2 cells with MAD1L1 antibody (R021450, 1:1,000). Nuclei were stained blue with DAPI; MAD1L1 was stained magenta with Alexa Fluor® 647. Images were taken using Leica stellaris 5. Protein abundance based on laser Intensity and smart gain: Medium. Scale bar, 20 μm.



Western blotting analysis using MAD1L1 antibody (R021450). Total cell lysates (30 μg) from various cell lines were loaded and separated by SDS-PAGE. The blot was incubated with MAD1L1 antibody (R021450, 1:5,000) and HRP-conjugated goat anti-rabbit secondary antibody (1:20,000) respectively. Image was developed using ECL Substrate Kit.



Western blotting analysis using MAD1L1 antibody (R021450). MAD1L1 expression in wild-type (WT) and MAD1L1 knockdown (KD) HeLa cells with 20 μg of total cell lysates. β-Tubulin serves as a loading control. The blot was incubated with MAD1L1 antibody (R021450, 1:5,000) and HRP-conjugated goat anti-rabbit secondary antibody (1:20,000) respectively. Image was developed using ECL Substrate Kit.