

## [KD Validated] Anti-eIF4B Rabbit mAb

Purified Recombinant Rabbit Monoclonal Antibody

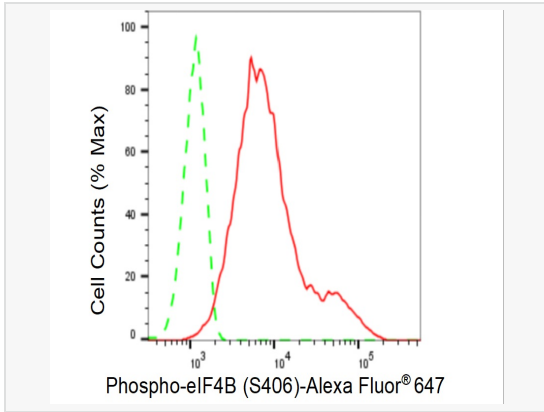
Catalog # R021427

### Product Information

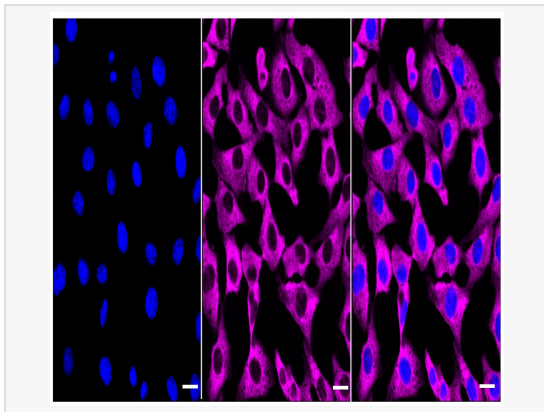
Application	WB, FC, IF (Cell)/ICC
Reactivity	Human, Mouse, Rat
Dilution	WB 1:1,000~1:5,000; FC 1:200~1:2,000; IF 1:100~1:1,000
Host	Rabbit
Clonality	Monoclonal
Clone No.	22S68K63
Isotype	IgG
Label	Unconjugated
Immunogen	A synthesized peptide derived from human Phospho-eIF4B (S406)
Format	Affinity purified monoclonal antibody supplied in PBS with 0.02% sodium azide and 50% glycerol, pH 7.3.
Storage	Shipped on wet ice. Store at -20°C. Stable for 12 months from date of receipt. Aliquoting is unnecessary for -20°C storage.
Precautions	[KD Validated] Anti-eIF4B Rabbit mAb [22S68K63] is for research use only and not for use in diagnostic or therapeutic procedures.

### Protein Information

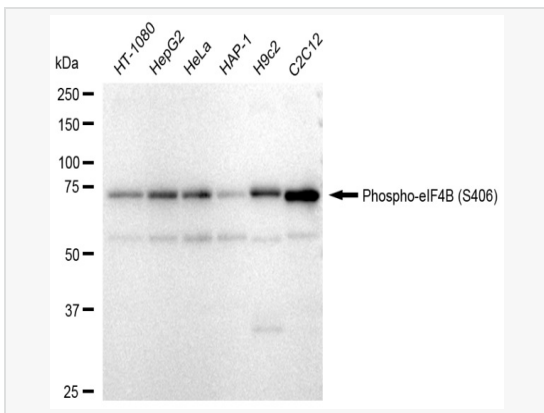
Synonyms	EIF4B; Eukaryotic Translation Initiation Factor 4B; EIF-4B; PRO1843.
Calculated MW	Calculated MW: 69 kDa, Observed MW: 75 kDa
Uniprot ID	P23588
Gene ID	1975
Background	Required for the binding of mRNA to ribosomes



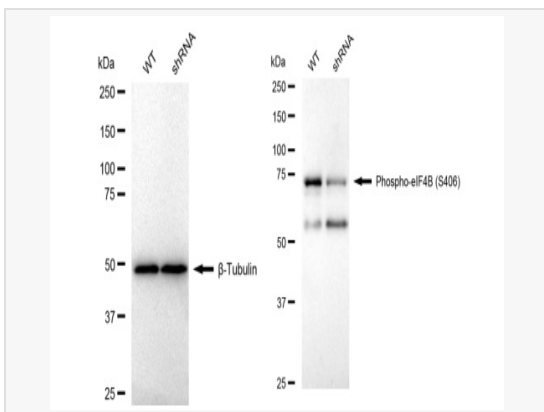
Flow cytometric analysis of Phospho-eIF4B (S406) expression in C2C12 cells using Phospho-eIF4B (S406) antibody (R021427, 1:2,000). Green, isotype control; red, Phospho-eIF4B (S406).



Immunocytochemical staining of HepG2 cells with Phospho-eIF4B (S406) antibody (R021427, 1:1,000). Nuclei were stained blue with DAPI; Phospho-eIF4B (S406) was stained magenta with Alexa Fluor® 647. Images were taken using Leica stellaris 5. Protein abundance based on laser Intensity and smart gain: Medium. Scale bar, 20  $\mu$ m.



Western blotting analysis using Phospho-eIF4B (S406) antibody (R021427). Total cell lysates (30  $\mu$ g) from various cell lines were loaded and separated by SDS-PAGE. The blot was incubated with Phospho-eIF4B (S406) antibody (R021427, 1:5,000) and HRP-conjugated goat anti-rabbit secondary antibody (1:20,000) respectively. Image was developed using ECL Substrate Kit.



Western blotting analysis using Phospho-eIF4B (S406) antibody (R021427). Phospho-eIF4B (S406) expression in wild type (WT) and Phospho-eIF4B (S406) shRNA knockdown (KD) HeLa cells with 30  $\mu$ g of total cell lysates.  $\beta$ -Tubulin serves as a loading control. The blot was incubated with Phospho-eIF4B (S406) antibody (R021427, 1:5,000) and HRP-conjugated goat anti-rabbit secondary antibody (1:20,000) respectively. Image was developed using ECL Substrate Kit.