

[KD Validated] Anti-RAB5C Rabbit mAb

Purified Recombinant Rabbit Monoclonal Antibody

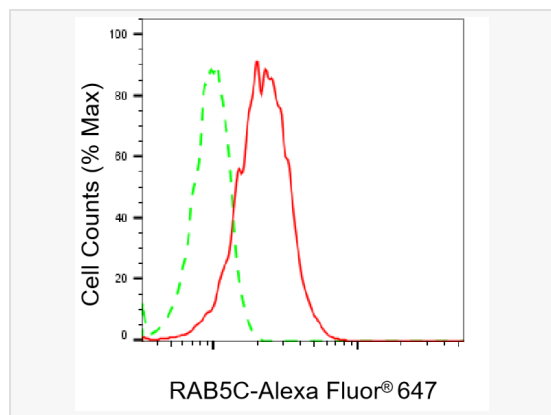
Catalog # R021415

Product Information

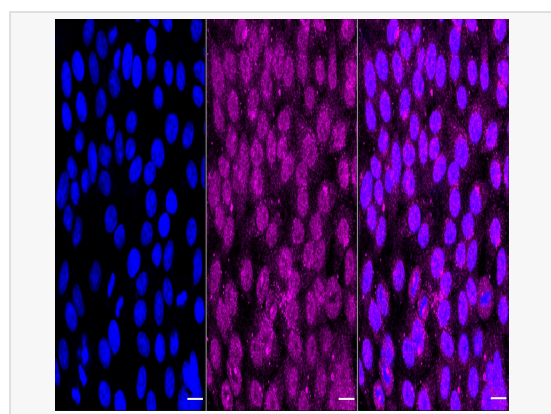
Application	WB, FC, IF (Cell)/ICC
Reactivity	Human, Mouse, Rat
Dilution	WB 1:1,000~1:5,000; FC 1:200~1:2,000; IF 1:100~1:1,000
Host	Rabbit
Clonality	Monoclonal
Clone No.	40C02C22
Isotype	IgG
Label	Unconjugated
Immunogen	A synthesized peptide derived from human RAB5C / RABL
Format	Affinity purified monoclonal antibody supplied in PBS with 0.02% sodium azide and 50% glycerol, pH 7.3.
Storage	Shipped on wet ice. Store at -20°C. Stable for 12 months from date of receipt. Aliquoting is unnecessary for -20°C storage.
Precautions	[KD Validated] Anti-RAB5C Rabbit mAb [40C02C22] is for research use only and not for use in diagnostic or therapeutic procedures.

Protein Information

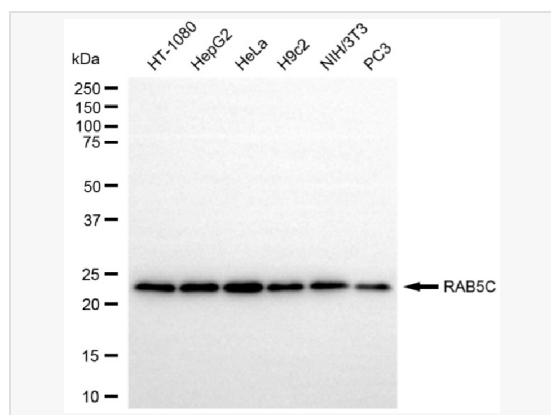
Synonyms	RAB5C; RAB5C, Member RAS Oncogene Family; RAB5CL; RABL; RAB5C, Member Of RAS Oncogene Family; Ras-Related Protein Rab-5C; L1880; RAB5L; RAB, Member Of RAS Oncogene Family-Like; EC 3.6.5.2.
Calculated MW	Calculated MW: 23 kDa, Observed MW: 23 kDa
Uniprot ID	P51148
Gene ID	5878
Background	Protein transport.



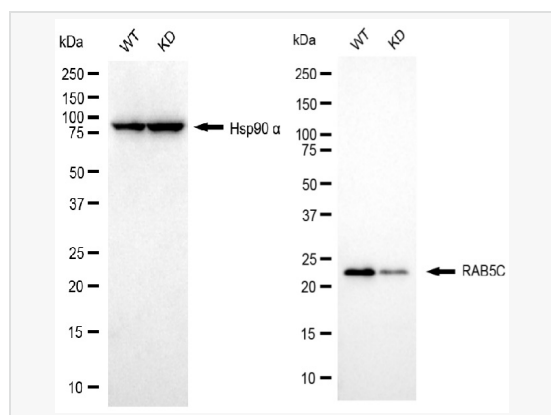
Flow cytometric analysis of RAB5C expression in HepG2 cells using RAB5C antibody (R021415, 1:2,000). Green, isotype control; red, RAB5C.



Immunocytochemical staining of HepG2 cells with RAB5C antibody (R021415, 1:1,000). Nuclei were stained blue with DAPI; RAB5C was stained magenta with Alexa Fluor® 647. Images were taken using Leica stellaris 5. Protein abundance based on laser Intensity and smart gain: Medium. Scale bar, 20 µm.



Western blotting analysis using RAB5C antibody (R021415). Total cell lysates (30 µg) from various cell lines were loaded and separated by SDS-PAGE. The blot was incubated with RAB5C antibody (R021415, 1:5,000) and HRP-conjugated goat anti-rabbit secondary antibody (1:20,000) respectively. Image was developed using ECL Substrate Kit.



Western blotting analysis using RAB5C antibody (R021415). RAB5C expression in wild type (WT) and RAB5C knockdown (KD) HSHC cells with 20 µg of total cell lysates. Hsp90 α serves as a loading control. The blot was incubated with RAB5C antibody (R021415, 1:5,000) and HRP-conjugated goat anti-rabbit secondary antibody (1:20,000) respectively. Image was developed using ECL Substrate Kit.