

[KD Validated] Anti-EIF4E Rabbit mAb

Purified Recombinant Rabbit Monoclonal Antibody

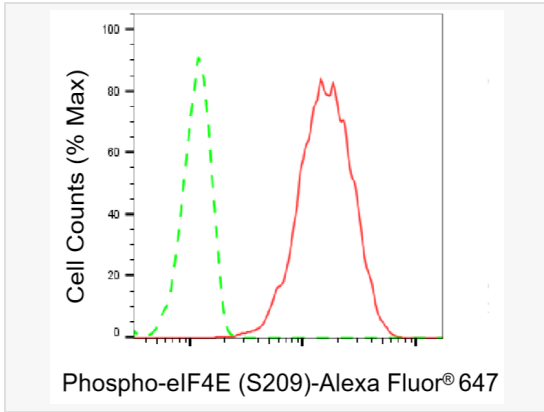
Catalog # R021409

Product Information

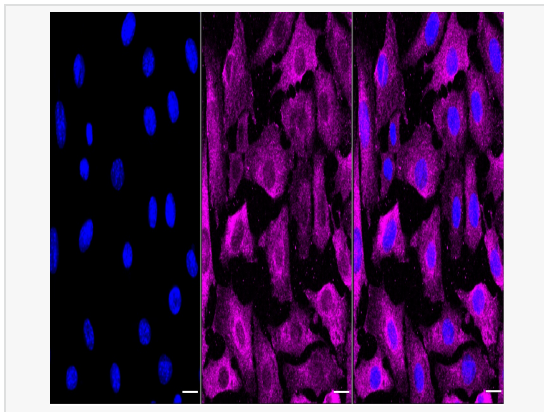
Application	WB, FC, IF (Cell)/ICC
Reactivity	Human, Mouse, Rat
Dilution	WB 1:2,000~1:10,000; FC 1:200~1:2,000; IF 1:100~1:1,000
Host	Rabbit
Clonality	Monoclonal
Clone No.	66R90B82
Isotype	IgG
Label	Unconjugated
Immunogen	A synthesized peptide derived from human Phospho-eIF4E (S209)
Format	Affinity purified monoclonal antibody supplied in PBS with 0.02% sodium azide and 50% glycerol, pH 7.3.
Storage	Shipped on wet ice. Store at -20°C. Stable for 12 months from date of receipt. Aliquoting is unnecessary for -20°C storage.
Precautions	[KD Validated] Anti-EIF4E Rabbit mAb [66R90B82] is for research use only and not for use in diagnostic or therapeutic procedures.

Protein Information

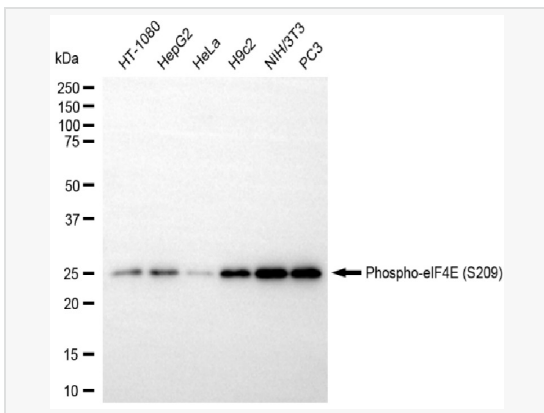
Synonyms	EIF4E; Eukaryotic Translation Initiation Factor 4E; EIF4EL1; EIF4E1; EIF4F; MRNA Cap-Binding Protein; EIF-4F 25 KDa Subunit; EIF-4E; Eukaryotic Translation Initiation Factor 4E-Like 1; AUTS19; EIF4E; CBP.
Calculated MW	Calculated MW: 25 kDa, Observed MW: 25 kDa
Uniprot ID	P06730
Gene ID	1977
Background	eIF4E, a protein modulates translation of maternal mRNAs in early embryos before the onset of zygotic transcription. eIF4E also influences the overall rate of translation. eIF4E binds to the 7 methyl GTP cap structure of eukaryotic mRNAs. Phosphorylation of eIF4E on serine 209 regulates the affinity of this protein for the 7 methyl GTP cap and/or RNA. Phosphorylation also enhances the interaction of eIF4E with eIF4G, which form a complex known as eIF4F. eIF4E phosphorylation is correlated with increased translational rate in a number of cell types.



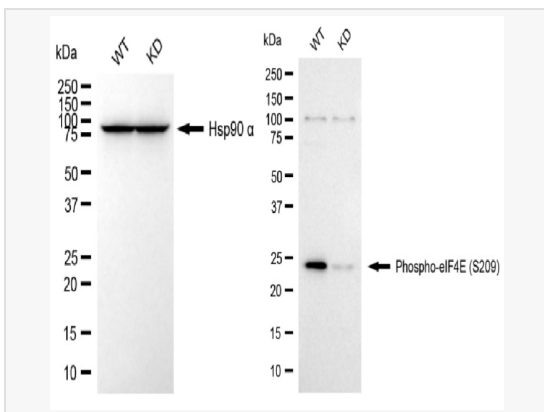
Flow cytometric analysis of Phospho-eIF4E (S209) expression in C2C12 cells using Phospho-eIF4E (S209) antibody (R021409, 1:2,000). Green, isotype control; red, Phospho-eIF4E (S209).



Immunocytochemical staining of C2C12 cells with Phospho-eIF4E (S209) antibody (R021409, 1:1,000). Nuclei were stained blue with DAPI; Phospho-eIF4E (S209) was stained magenta with Alexa Fluor® 647. Images were taken using Leica stellaris 5. Protein abundance based on laser Intensity and smart gain: High. Scale bar, 20 μ m.



Western blotting analysis using phospho-eIF4E (S209) antibody (R021409). Total cell lysates (30 μ g) from various cell lines were loaded and separated by SDS-PAGE. The blot was incubated with phospho-eIF4E (S209) antibody (R021409, 1:10,000) and HRP-conjugated goat anti-rabbit secondary antibody (1:20,000) respectively. Image was developed using ECL Substrate Kit.



Western blotting analysis using phospho-eIF4E (S209) antibody (R021409). Phospho-eIF4E (S209) expression in wild type (WT) and EIF4E knockdown (KD) HSHC cells with 20 μ g of total cell lysates. Hsp90 α serves as a loading control. The blot was incubated with phospho-eIF4E (S209) antibody (R021409, 1:10,000) and HRP-conjugated goat anti-rabbit secondary antibody (1:20,000) respectively. Image was developed using ECL Substrate Kit.