

## [KD Validated] Anti-RAD50 Rabbit mAb

Purified Recombinant Rabbit Monoclonal Antibody

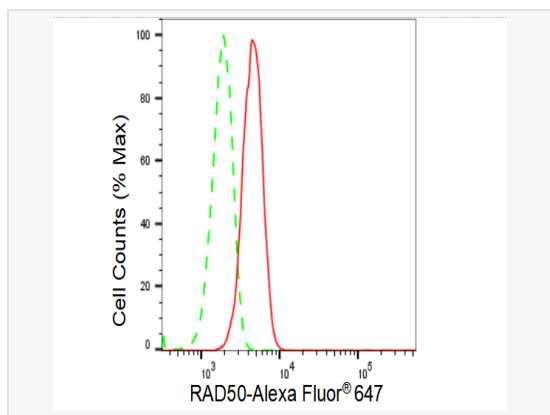
Catalog # R021382

### Product Information

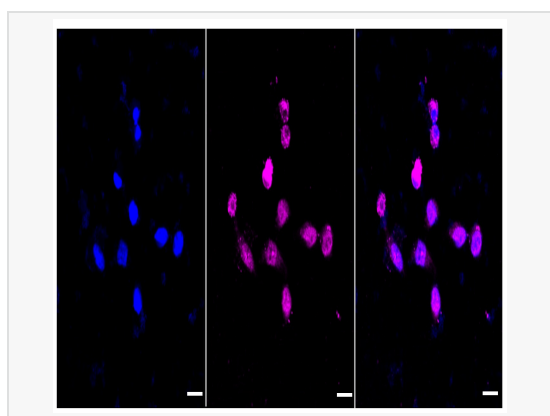
Application	WB, FC, IF (Cell)/ICC
Reactivity	Human, Mouse, Rat
Dilution	WB 1:1,000~1:5,000; FC 1:200~1:2,000; IF 1:100~1:1,000
Host	Rabbit
Clonality	Monoclonal
Clone No.	76T27G62
Isotype	IgG
Label	Unconjugated
Immunogen	A synthesized peptide derived from human Rad50
Format	Affinity purified monoclonal antibody supplied in PBS with 0.02% sodium azide and 50% glycerol, pH 7.3.
Storage	Shipped on wet ice. Store at -20°C. Stable for 12 months from date of receipt. Aliquoting is unnecessary for -20°C storage.
Precautions	[KD Validated] Anti-RAD50 Rabbit mAb [76T27G62] is for research use only and not for use in diagnostic or therapeutic procedures.

### Protein Information

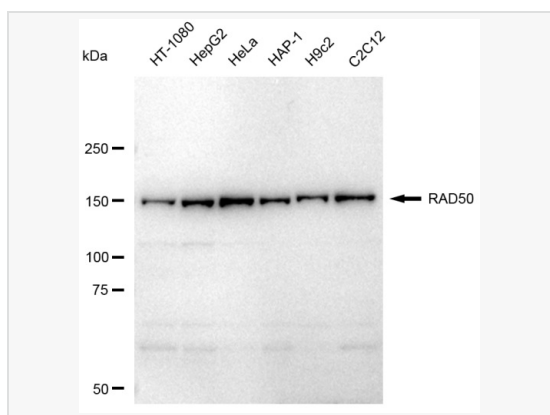
Synonyms	RAD50; RAD50 Double Strand Break Repair Protein; RAD50 Homolog, Double Strand Break Repair Protein; DNA Repair Protein RAD50; RAD50-2; HRad50; HRAD50; RAD50 (S. Cerevisiae) Homolog; RAD50 Homolog (S. Cerevisiae); EC 3.6.3.27; EC 3.6.1.15; EC 3.6.-.-; EC 3.6.3; RAD502; NBSLD.
Calculated MW	Calculated MW: 154 kDa, Observed MW: 154 kDa
Uniprot ID	Q92878
Gene ID	10111
Background	Component of the MRN complex, which plays a central role in double-strand break (DSB) repair, DNA recombination, maintenance of telomere integrity and meiosis. The complex possesses single-strand endonuclease activity and double-strand-specific 3'-5' exonuclease activity, which are provided by MRE11A.



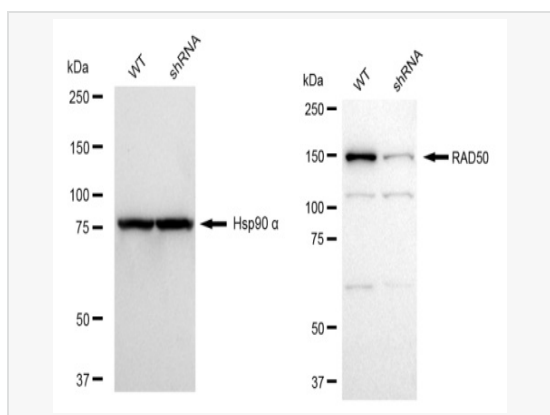
Flow cytometric analysis of RAD50 expression in HeLa cells using RAD50 antibody (R021382, 1:2,000). Green, isotype control; red, RAD50.



Immunocytochemical staining of HeLa cells with RAD50 antibody (R021382, 1:1,000). Nuclei were stained blue with DAPI; RAD50 was stained magenta with Alexa Fluor® 647. Images were taken using Leica stellaris 5. Protein abundance based on laser Intensity and smart gain: Medium. Scale bar: 20 µm.



Western blotting analysis using RAD50 antibody (R021382). Total cell lysates (30 µg) from various cell lines were loaded and separated by SDS-PAGE. The blot was incubated with RAD50 antibody (R021382, 1:5,000) and HRP-conjugated goat anti-rabbit secondary antibody (1:20,000) respectively. Image was developed using ECL Substrate Kit.



Western blotting analysis using RAD50 antibody (R021382). RAD50 expression in wild type (WT) and RAD50 shRNA knockdown (KD) HT-1080 cells with 30 µg of total cell lysates. Hsp90 α serves as a loading control. The blot was incubated with RAD50 antibody (R021382, 1:5,000) and HRP-conjugated goat anti-rabbit secondary antibody (1:20,000) respectively. Image was developed using ECL Substrate Kit.