

## [KD Validated] Anti-ATG5 Rabbit mAb

Purified Recombinant Rabbit Monoclonal Antibody

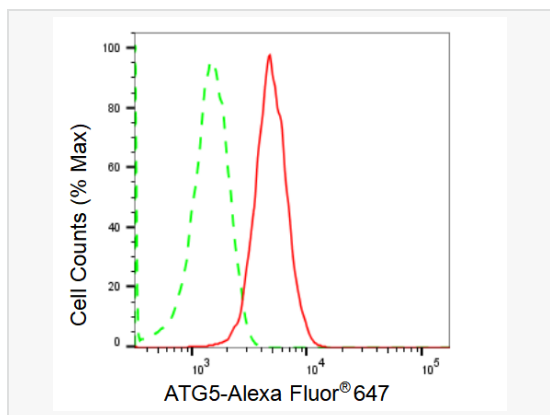
Catalog # R021346

### Product Information

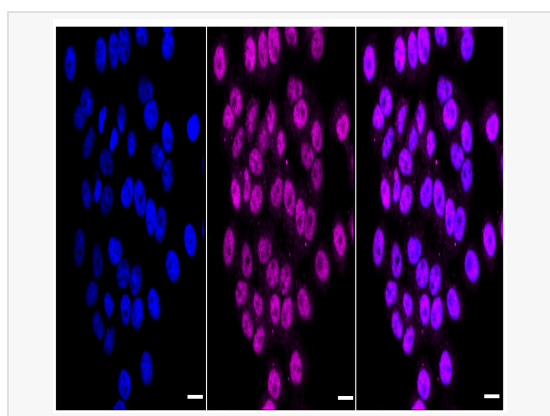
Application	WB, FC, IF (Cell)/ICC
Reactivity	Human, Mouse, Rat
Dilution	WB 1:1,000~1:5,000; FC 1:200~1:2,000; IF 1:100~1:1,000
Host	Rabbit
Clonality	Monoclonal
Clone No.	90F85B61
Isotype	IgG
Label	Unconjugated
Immunogen	A synthesized peptide derived from human ATG5
Format	Affinity purified monoclonal antibody supplied in PBS with 0.02% sodium azide and 50% glycerol, pH 7.3.
Storage	Shipped on wet ice. Store at -20°C. Stable for 12 months from date of receipt. Aliquoting is unnecessary for -20°C storage.
Precautions	[KD Validated] Anti-ATG5 Rabbit mAb [90F85B61] is for research use only and not for use in diagnostic or therapeutic procedures.

### Protein Information

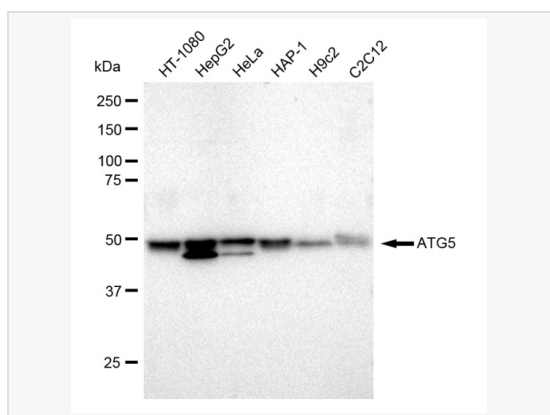
Synonyms	ATG5; Autophagy Related 5; ASP; HAPG5; APG5L; APG5; Apoptosis-Specific Protein; Autophagy Protein 5; ATG5 Autophagy Related 5 Homolog (S. Cerevisiae); APG5 (Autophagy 5, S. Cerevisiae)-Like; APG5 Autophagy 5-Like (S. Cerevisiae); ATG5 Autophagy Related 5 Homolog; APG5 Autophagy 5-Like; APG5-LIKE; APG5-Like; SCAR25.
Calculated MW	Calculated MW: 32 kDa; Observed MW: 50 kDa
Uniprot ID	Q9HIY0
Gene ID	9474
Background	Required for autophagy. Conjugates to ATG12 and associates with isolation membrane to form cup-shaped isolation membrane and autophagosome. Involved in mitochondrial quality control after oxidative damage, and in subsequent cellular longevity.



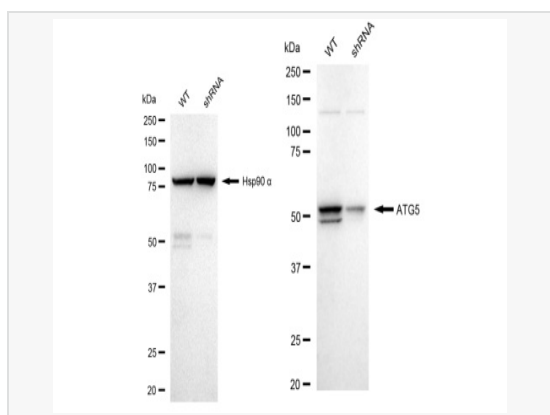
Flow cytometric analysis of ATG5 expression in HepG2 cells using ATG5 antibody (R021346, 1:2,000). Green, isotype control; red, ATG5.



Immunocytochemical staining of HepG2 cells with ATG5 antibody (R021346, 1:1,000). Nuclei were stained blue with DAPI; ATG5 was stained magenta with Alexa Fluor® 647. Images were taken using Leica stellaris 5. Protein abundance based on laser Intensity and smart gain: Low. Scale bar: 20 µm.



Western blotting analysis using ATG5 antibody (R021346). Total cell lysates (30 µg) from various cell lines were loaded and separated by SDS-PAGE. The blot was incubated with ATG5 antibody (R021346, 1:5,000) and HRP-conjugated goat anti-rabbit secondary antibody (1:20,000) respectively. Image was developed using ECL Substrate Kit.



Western blotting analysis using ATG5 antibody (R021346). ATG5 expression in wild type (WT) and ATG5 shRNA knockdown (KD) HeLa cells with 30 µg of total cell lysates. Hsp90 α serves as a loading control. The blot was incubated with ATG5 antibody (R021346, 1:5,000) and HRP-conjugated goat anti-rabbit secondary antibody (1:20,000) respectively. Image was developed using ECL Substrate Kit.