

[KD Validated] Anti-RAD52 Rabbit mAb

Purified Recombinant Rabbit Monoclonal Antibody

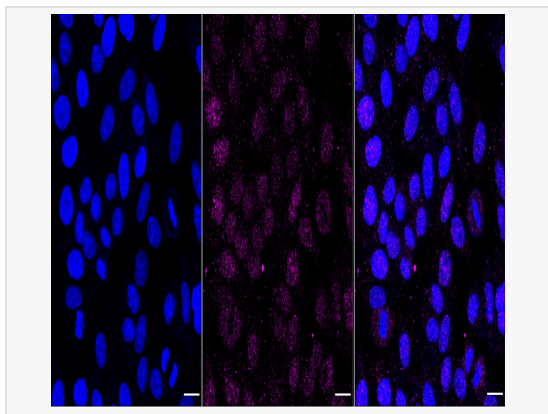
Catalog # R021334

Product Information

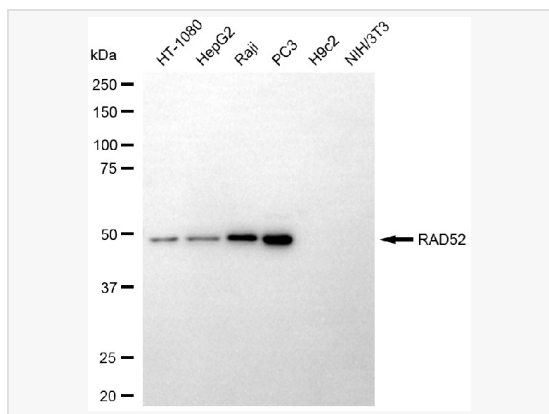
Application	WB, IF (Cell)/ICC
Reactivity	Human
Dilution	WB 1:1,000~1:5,000; IF 1:100~1:1,000
Host	Rabbit
Clonality	Monoclonal
Clone No.	54K91S53
Isotype	IgG
Label	Unconjugated
Immunogen	A synthesized peptide derived from human RAD52
Format	Affinity purified monoclonal antibody supplied in PBS with 0.02% sodium azide and 50% glycerol, pH 7.3.
Storage	Shipped on wet ice. Store at -20°C. Stable for 12 months from date of receipt. Aliquoting is unnecessary for -20°C storage.
Precautions	[KD Validated] Anti-RAD52 Rabbit mAb [54K91S53] is for research use only and not for use in diagnostic or therapeutic procedures.

Protein Information

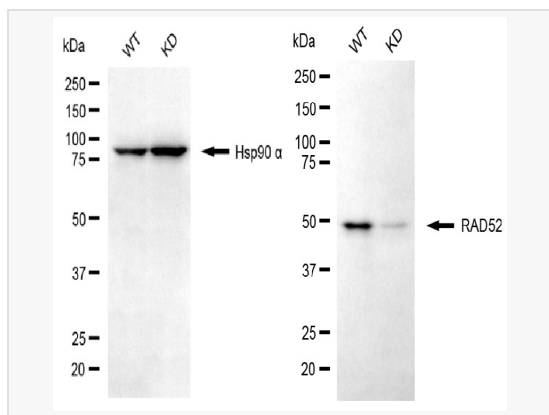
Synonyms	RAD52; RAD52 Homolog, DNA Repair Protein; DNA Repair Protein RAD52 Homolog; Rhabdomyosarcoma Antigen MU-RMS-40.23; RAD52 (S. Cerevisiae) Homolog; RAD52 Homolog (S. Cerevisiae); Recombination Protein RAD52.
Calculated MW	Calculated MW: 46 kDa; Observed MW: 48 kDa
Uniprot ID	P43351
Gene ID	5893
Background	The protein encoded by this gene shares similarity with <i>Saccharomyces cerevisiae</i> Rad52, a protein important for DNA double-strand break repair and homologous recombination. This gene product was shown to bind single-stranded DNA ends, and mediate the DNA-DNA interaction necessary for the annealing of complementary DNA strands. It was also found to interact with DNA recombination protein RAD51, which suggested its role in RAD51 related DNA recombination and repair. A pseudogene of this gene is present on chromosome 2. Alternative splicing results in multiple transcript variants. Additional alternatively spliced transcript variants of this gene have been described, but their full-length nature is not known. [provided by RefSeq, Jul 2014]



Immunocytochemical staining of RAD52 cells with RAD52 antibody (R021334, 1:1,000). Nuclei were stained blue with DAPI; RAD52 was stained magenta with Alexa Fluor® 647. Images were taken using Leica stellaris 5. Protein abundance based on laser Intensity and smart gain: Low. Scale bar, 20 µm.



Western blotting analysis using RAD52 antibody (R021334). Total cell lysates (30 µg) from various cell lines were loaded and separated by SDS-PAGE. The blot was incubated with RAD52 antibody (R021334, 1:5,000) and HRP-conjugated goat anti-rabbit secondary antibody (1:20,000) respectively. Image was developed using ECL Substrate Kit.



Western blotting analysis using RAD52 antibody (R021334). RAD52 expression in wild type (WT) and RAD52 knockdown (KD) HeLa cells with 20 µg of total cell lysates. Hsp90 α serves as a loading control. The blot was incubated with RAD52 antibody (R021334, 1:5,000) and HRP-conjugated goat anti-rabbit secondary antibody (1:20,000) respectively. Image was developed using ECL Substrate Kit.