

## [KD Validated] Anti-DLG1 Rabbit mAb

Purified Recombinant Rabbit Monoclonal Antibody

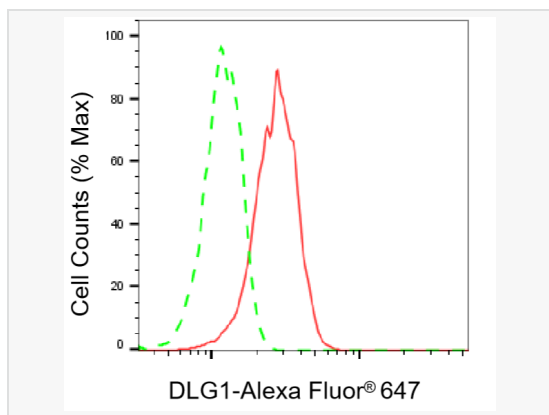
Catalog # R021330

### Product Information

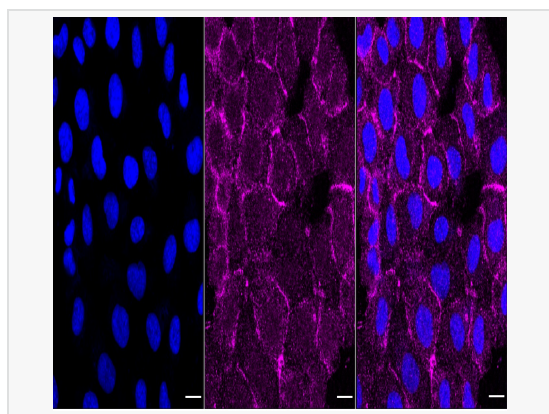
Application	WB, FC, IF (Cell)/ICC
Reactivity	Human, Mouse, Rat
Dilution	WB 1:1,000~1:5,000; FC 1:200~1:2,000; IF 1:100~1:1,000
Host	Rabbit
Clonality	Monoclonal
Clone No.	62M03F75
Isotype	IgG
Label	Unconjugated
Immunogen	A synthesized peptide derived from human SAP97
Format	Affinity purified monoclonal antibody supplied in PBS with 0.02% sodium azide and 50% glycerol, pH 7.3.
Storage	Shipped on wet ice. Store at -20°C. Stable for 12 months from date of receipt. Aliquoting is unnecessary for -20°C storage.
Precautions	[KD Validated] Anti-DLG1 Rabbit mAb [62M03F75] is for research use only and not for use in diagnostic or therapeutic procedures.

### Protein Information

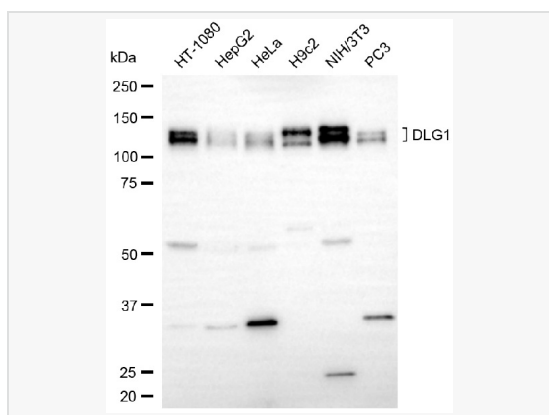
Synonyms	DLG1; Discs Large MAGUK Scaffold Protein 1; SAP-97; SAP97; Synapse-Associated Protein 97; DJ1061C18.1.1; DLGH1; Hdlg; Discs Large Homolog 1, Scribble Cell Polarity Complex Component; Presynaptic Protein SAP97; Disks Large Homolog 1; Discs, Large Homolog 1 (Drosophila); Discs Large Homolog 1; HDlg.
Calculated MW	Calculated MW: 100 kDa; Observed MW: 130 kDa
Uniprot ID	Q12959
Gene ID	1739
Background	Essential multidomain scaffolding protein required for normal development (By similarity). Recruits channels, receptors and signaling molecules to discrete plasma membrane domains in polarized cells.



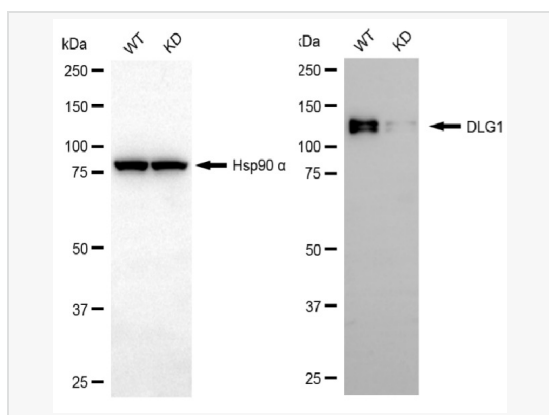
Flow cytometric analysis of DLG1 expression in HT-1080 cells using DLG1 antibody (R021330, 1:2,000). Green, isotype control; red, DLG1.



Immunocytochemical staining of HT-1080 cells with DLG1 antibody (R021330, 1:1,000). Nuclei were stained blue with DAPI; DLG1 was stained magenta with Alexa Fluor® 647. Images were taken using Leica stellaris 5. Protein abundance based on laser Intensity and smart gain: Medium. Scale bar, 20 µm.



Western blotting analysis using DLG1 antibody (R021330). Total cell lysates (30 µg) from various cell lines were loaded and separated by SDS-PAGE. The blot was incubated with DLG1 antibody (R021330, 1:5,000) and HRP-conjugated goat anti-rabbit secondary antibody (1:20,000) respectively. Image was developed using ECL Substrate Kit.



Western blotting analysis using DLG1 antibody (R021330). DLG1 expression in wild-type (WT) and DLG1 knockdown (KD) HSHC cells with 20 µg of total cell lysates. Hsp90 α serves as a loading control. The blot was incubated with DLG1 antibody (R021330, 1:5,000) and HRP-conjugated goat anti-rabbit secondary antibody (1:20,000) respectively. Image was developed using ECL Substrate Kit.