

[KD Validated] Anti-ATG13 Rabbit mAb

Purified Recombinant Rabbit Monoclonal Antibody

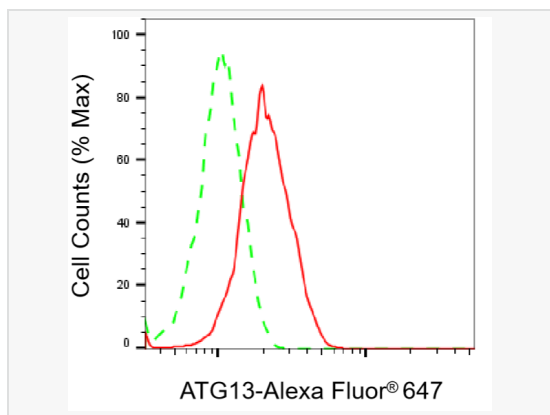
Catalog # R021297

Product Information

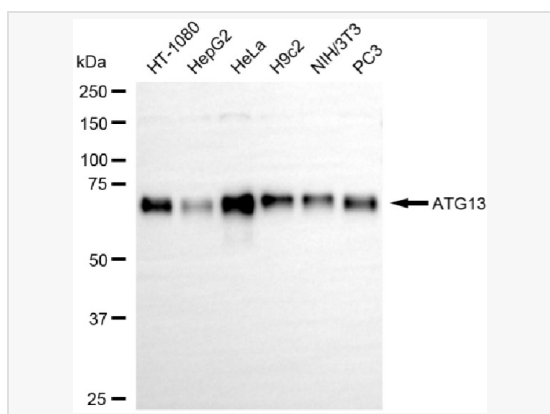
Application	WB, FC
Reactivity	Human, Mouse, Rat
Dilution	WB 1:1,000~1:5,000; FC 1:200~1:2,000
Host	Rabbit
Clonality	Monoclonal
Clone No.	80E09L74
Isotype	IgG
Label	Unconjugated
Immunogen	Recombinant protein of human KIAA0652
Format	Affinity purified monoclonal antibody supplied in PBS with 0.02% sodium azide and 50% glycerol, pH 7.3.
Storage	Shipped on wet ice. Store at -20°C. Stable for 12 months from date of receipt. Aliquoting is unnecessary for -20°C storage.
Precautions	[KD Validated] Anti-ATG13 Rabbit mAb [80E09L74] is for research use only and not for use in diagnostic or therapeutic procedures.

Protein Information

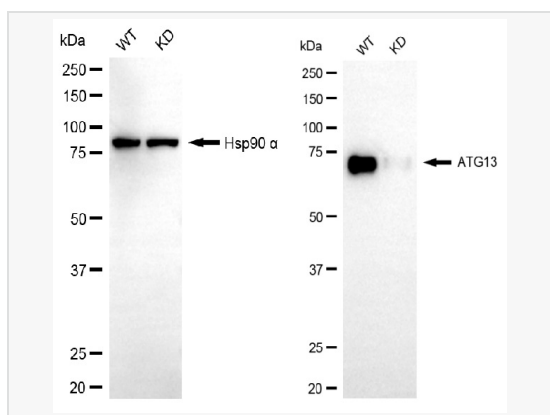
Synonyms	ATG13; Autophagy Related 13; KIAA0652; Autophagy-Related Protein 13; ATG13 Autophagy Related 13 Homolog (S. Cerevisiae); ATG13 Autophagy Related 13 Homolog; PARATARG8.
Calculated MW	Calculated MW: 57 kDa; Observed MW: 72 kDa
Uniprot ID	O75143
Gene ID	9776
Background	The protein encoded by this gene is an autophagy factor and a target of the TOR kinase signaling pathway. The encoded protein is essential for autophagosome formation and mitophagy. [provided by RefSeq, Oct 2016]
Cellular Location	Cytoplasm.Cytosol.Preautophagosomal structure.Under starvation conditions, is localized to punctate structures primarily representing the isolation membrane; the isolation membrane sequesters a portion of the cytoplasm resulting in autophagosome formation.



Flow cytometric analysis of ATG13 expression in HT-1080 cells using ATG13 antibody (R021297, 1:2,000). Green, isotype control; red, ATG13.



Western blotting analysis using ATG13 antibody (R021297). Total cell lysates (30 μ g) from various cell lines were loaded and separated by SDS-PAGE. The blot was incubated with ATG13 antibody (R021297, 1:5,000) and HRP-conjugated goat anti-rabbit secondary antibody (1:20,000) respectively. Image was developed using ECL Substrate Kit.



Western blotting analysis using ATG13 antibody (R021297). ATG13 expression in wild-type (WT) and ATG13 knockdown (KD) HeLa cells with 20 μ g of total cell lysates. Hsp90 α serves as a loading control. The blot was incubated with ATG13 antibody (R021297, 1:5,000) and HRP-conjugated goat anti-rabbit secondary antibody (1:20,000) respectively. Image was developed using ECL Substrate Kit.