

[KD Validated] Anti-CAB39 Rabbit mAb

Purified Recombinant Rabbit Monoclonal Antibody

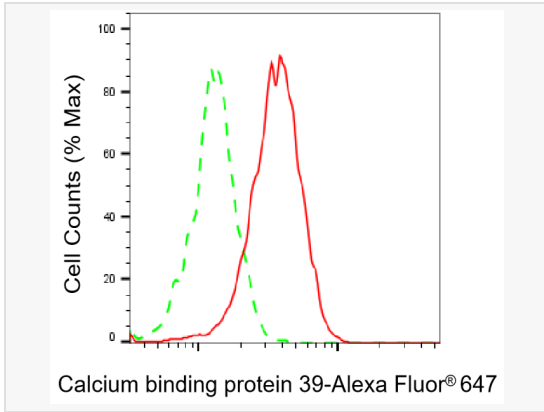
Catalog # R021279

Product Information

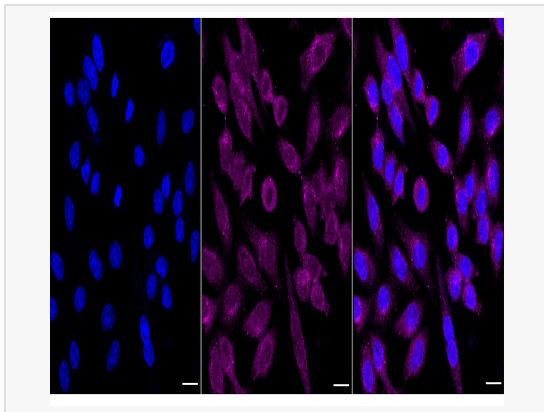
Application	WB, FC, IF (Cell)/ICC
Reactivity	Human, Mouse, Rat
Dilution	WB 1:1,000~1:5,000; FC 1:200~1:2,000; IF 1:100~1:1,000
Host	Rabbit
Clonality	Monoclonal
Clone No.	95L48G21
Isotype	IgG
Label	Unconjugated
Immunogen	A synthesized peptide derived from human CAB39/MO25
Format	Affinity purified monoclonal antibody supplied in PBS with 0.02% sodium azide and 50% glycerol, pH 7.3.
Storage	Shipped on wet ice. Store at -20°C. Stable for 12 months from date of receipt. Aliquoting is unnecessary for -20°C storage.
Precautions	[KD Validated] Anti-CAB39 Rabbit mAb [95L48G21] is for research use only and not for use in diagnostic or therapeutic procedures.

Protein Information

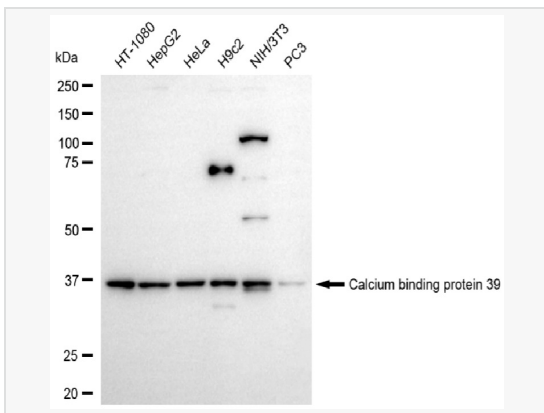
Synonyms	CAB39; Calcium Binding Protein 39; MO25; CGI-66; Calcium-Binding Protein 39; MO25alpha; Protein Mo25.
Calculated MW	Calculated MW: 40 kDa, Observed MW: 37 kDa
Uniprot ID	Q9Y376
Gene ID	51719
Background	Component of a complex that binds and activates STK11/LKBI
Cellular Location	Cytoplasm.



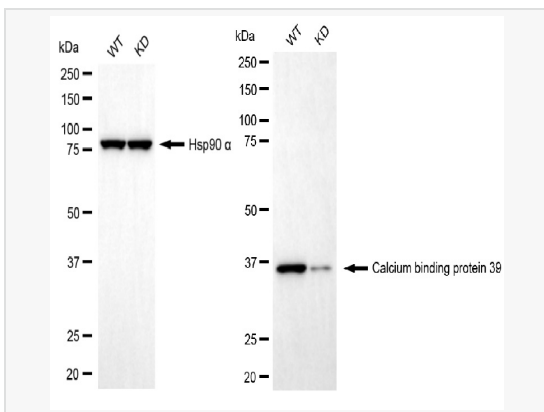
Flow cytometric analysis of Calcium binding protein 39 expression in HepG2 cells using Calcium binding protein 39 antibody (R021279, 1:2,000). Green, isotype control; red, Calcium binding protein 39.



Immunocytochemical staining of HepG2 cells with Calcium binding protein 39 antibody (R021279, 1:1,000). Nuclei were stained blue with DAPI; Calcium binding protein 39 was stained magenta with Alexa Fluor® 647. Images were taken using Leica stellaris 5. Protein abundance based on laser Intensity and smart gain: Medium. Scale bar, 20 μm.



Western blotting analysis using calcium binding protein 39 antibody (R021279). Total cell lysates (30 μg) from various cell lines were loaded and separated by SDS-PAGE. The blot was incubated with calcium binding protein 39 antibody (R021279, 1:5,000) and HRP-conjugated goat anti-rabbit secondary antibody (1:20,000) respectively. Image was developed using ECL Substrate Kit.



Western blotting analysis using calcium binding protein 39 antibody (R021279). Calcium binding protein 39 expression in wild-type (WT) and calcium binding protein 39 (CAB39) knockdown (KD) 293T cells with 20 μg of total cell lysates. Hsp90 α serves as a loading control. The blot was incubated with calcium binding protein 39 antibody (R021279, 1:5,000) and HRP-conjugated goat anti-rabbit secondary antibody (1:20,000) respectively. Image was developed using ECL Substrate Kit.