

[KD Validated] Anti-PFKFB3 Rabbit mAb

Purified Recombinant Rabbit Monoclonal Antibody

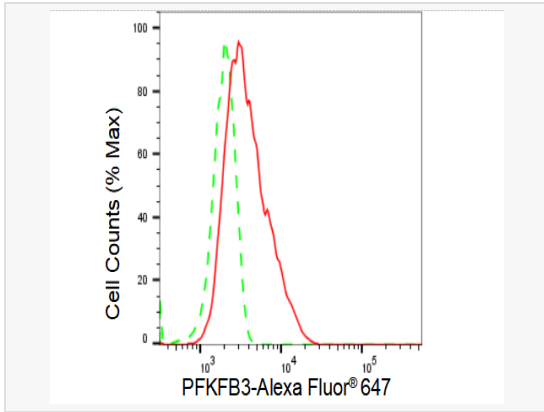
Catalog # R021242

Product Information

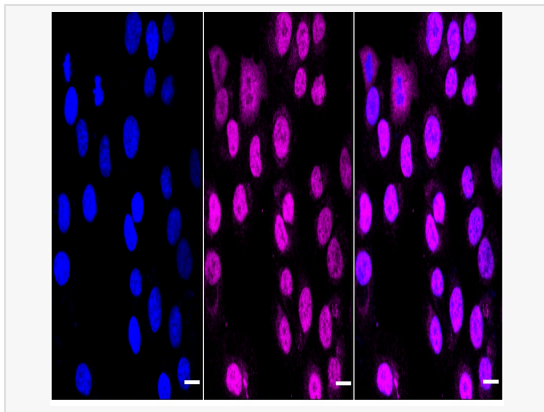
Application	WB, FC, IF (Cell)/ICC
Reactivity	Human, Mouse, Rat
Dilution	WB 1:1,000~1:5,000; FC 1:200~1:2,000; IF 1:100~1:1,000
Host	Rabbit
Clonality	Monoclonal
Clone No.	32O71F11
Isotype	IgG
Label	Unconjugated
Immunogen	A synthesized peptide derived from human PFKFB3
Format	Affinity purified monoclonal antibody supplied in PBS with 0.02% sodium azide and 50% glycerol, pH 7.3.
Storage	Shipped on wet ice. Store at -20°C. Stable for 12 months from date of receipt. Aliquoting is unnecessary for -20°C storage.
Precautions	[KD Validated] Anti-PFKFB3 Rabbit mAb [32O71F11] is for research use only and not for use in diagnostic or therapeutic procedures.

Protein Information

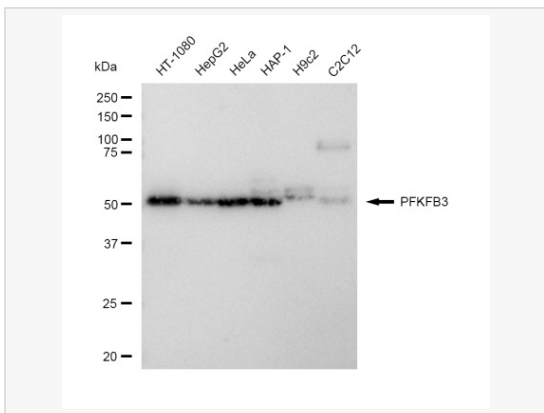
Synonyms	PFKFB3; 6-Phosphofructo-2-Kinase/Fructose-2,6-Bisphosphatase 3; 6-Phosphofructo-2-Kinase/Fructose-2,6-Bisphosphatase 3; 6PF-2-K/Fru-2,6-P2ase Brain/Placenta-Type Isozyme 3; Renal Carcinoma Antigen NY-REN-56; 6PF-2-K/Fru-2,6-P2ase 3; PFK/FBPase 3; IPFK-2; Inducible 6-Phosphofructo-2-Kinase/Fructose-2,6-Bisphosphatase; Fructose-6-Phosphate,2-Kinase/Fructose-2,6-Bisphosphatase; 6-Phosphofructo-2-Kinase/ Fructose-2,6-Bisphosphatase; IPFK2; PFK2.
Calculated MW	Calculated MW: 60 kDa, Observed MW: 58 kDa
Uniprot ID	Q16875
Gene ID	5209
Background	Synthesis and degradation of fructose 2,6-bisphosphate.
Tissue Location	Ubiquitous.



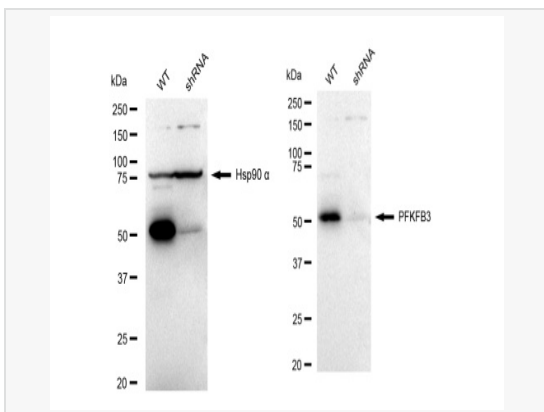
Flow cytometric analysis of PFKFB3 expression in HT-1080 cells using PFKFB3 antibody (R021242, 1:2,000). Green, isotype control; red, PFKFB3.



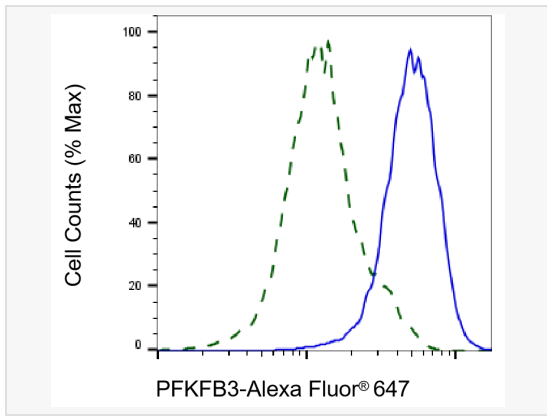
Immunocytochemical staining of HT-1080 cells with PFKFB3 antibody (R021242, 1:1,000). Nuclei were stained blue with DAPI; PFKFB3 was stained magenta with Alexa Fluor® 647. Images were taken using Leica stellaris 5. Protein abundance based on laser Intensity and smart gain: Medium. Scale bar, 20 µm.



Western blotting analysis using PFKFB3 antibody (R021242). Total cell lysates (30 µg) from various cell lines were loaded and separated by SDS-PAGE. The blot was incubated with PFKFB3 antibody (R021242, 1:5,000) and HRP-conjugated goat anti-rabbit secondary antibody (1:20,000) respectively. Image was developed using ECL Substrate Kit.



Western blotting analysis using PFKFB3 antibody (R021242). PFKFB3 expression in wild type (WT) and PFKFB3 shRNA knockdown (KD) HT-1080 cells with 30 µg of total cell lysates. Hsp90 α serves as a loading control. The blot was incubated with PFKFB3 antibody (R021242, 1:5,000) and HRP-conjugated goat anti-rabbit secondary antibody (1:20,000) respectively. Image was developed using ECL Substrate Kit.



Validation of PFKFB3 knockdown using flow cytometry. Wild-type(WT, Blue) and knockdown(KD, Green) HT-1080 cells were stained with PFKFB3 antibody (R021242, 1:2,000) and analyzed using BD flow cytometer.