

[KD Validated] Anti-ROS1 Mouse mAb

Purified Recombinant Rabbit Monoclonal Antibody

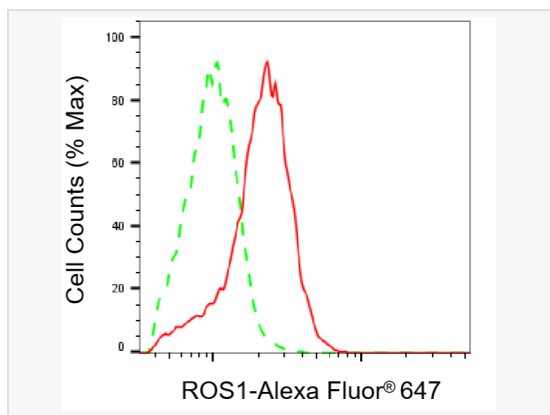
Catalog # M021223

Product Information

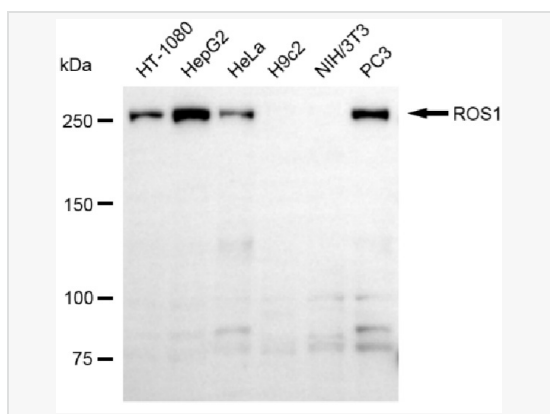
Application	WB, FC
Reactivity	Human
Dilution	WB 1:400~1:2,000; FC 1:200~1:2,000
Host	Mouse
Clonality	Monoclonal
Clone No.	30C80S56
Isotype	IgG
Label	Unconjugated
Immunogen	Recombinant protein of human ROS1
Format	Affinity purified monoclonal antibody supplied in PBS with 0.02% sodium azide and 50% glycerol, pH 7.3.
Storage	Shipped on wet ice. Store at -20°C. Stable for 12 months from date of receipt. Aliquoting is unnecessary for -20°C storage.
Precautions	[KD Validated] Anti-ROS1 Mouse mAb [30C80S56] is for research use only and not for use in diagnostic or therapeutic procedures.

Protein Information

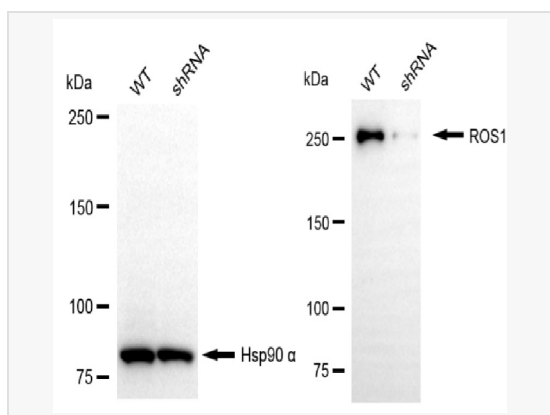
Synonyms	ROS1; ROS Proto-Oncogene 1, Receptor Tyrosine Kinase; MCF3; ROS; C-Ros-1; V-Ros Avian UR2 Sarcoma Virus Oncogene Homolog 1; C-Ros Oncogene 1, Receptor Tyrosine Kinase; Proto-Oncogene Tyrosine-Protein Kinase ROS; Proto-Oncogene C-Ros-1; V-Ros UR2 Sarcoma Virus Oncogene Homolog 1 (Avian); ROS Proto-Oncogene 1, Receptor Tyrosine Kinase; Transmembrane Tyrosine-Specific Protein Kinase; Receptor Tyrosine Kinase C-Ros Oncogene 1; C-Ros Receptor Tyrosine Kinase; Proto-Oncogene C-Ros; EC 2.7.10.1.
Calculated MW	Calculated MW: 264 kDa; Observed MW: 264 kDa
Uniprot ID	P08922
Gene ID	6098
Background	This proto-oncogene, highly-expressed in a variety of tumor cell lines, belongs to the sevenless subfamily of tyrosine kinase insulin receptor genes. The protein encoded by this gene is a type I integral membrane protein with tyrosine kinase activity. The protein may function as a growth or differentiation factor receptor. [provided by RefSeq, Jul 2008]



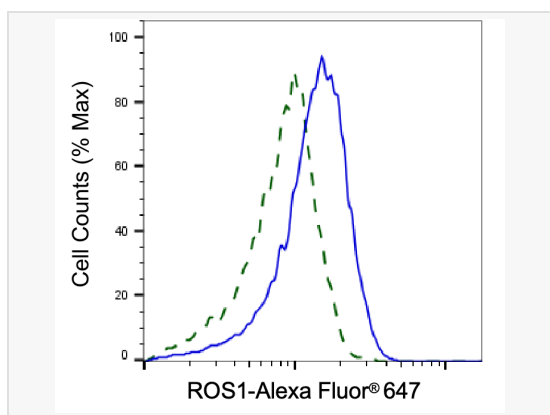
Flow cytometric analysis of ROS1 expression in HAP-1 cells using ROS1 antibody (M021223, 1:2,000). Green, isotype control; red, ROS1.



Western blotting analysis using ROS1 antibody (M021223). Total cell lysates (30 μ g) from various cell lines were loaded and separated by SDS-PAGE. The blot was incubated with ROS1 antibody (M021223, 1:2,000) and HRP-conjugated goat anti-mouse secondary antibody (1:20,000) respectively. Image was developed using ECL Substrate Kit.



Western blotting analysis using ROS1 antibody (M021223). ROS1 expression in wild type (WT) and ROS1 shRNA knockdown (KD) HeLa cells with 20 μ g of total cell lysates. Hsp90 α serves as a loading control. The blot was incubated with ROS1 antibody (M021223, 1:500) and HRP-conjugated goat anti-mouse secondary antibody (1:20,000) respectively. Image was developed using ECL Substrate Kit.



Validation of ROS1 knockdown using flow cytometry. Wild-type(WT, Blue) and knockdown(KD, Green) HeLa cells were stained with ROS1 antibody (M021223, 1:2,000) and analyzed using BD flow cytometer.